

SHEN LAN TAN SUO

For the additional information please contact:

MarketingDepartmentof COSL Drilling

Telephone: +86 -10 -8452 2511

Email: sh_cosldrillingmarket@cosl.com.cn

Website: www.cosl.com.cn

Office address:

No.201,Haiyou Street, Yanjiao Developing Zone,
Sanhe City, Hebei Province (Post Code: 065201)

General Description	
Design/Generation	MSC & CMIH /CM-SD1000
Constructing Shipyard	CMHI(HAIMEN). CHINA
Year of Construction	2021
Classification	DNV.GL & CCS
Flag	China
Overall Dimensions	111.5 m L×88.5m W
Main deck elevation above baseline	40.50m
Associated air gap (Drilling draft).....	10 m
Draft at load line (deepest)	24 m
Displacement at load line.....	50700mt
Drilling draft/related displacement	72.18ft/48754mt
Max. Substructure/Rotary Load	18000/13235lbs
Setback capacity.....	600mt
Operating Water Depth	82m(min)/1000m(max designed)
Max. Rating Drilling Depth	9144 m
Accommodation	160

Drilling Equipment	
Derrick	Huisman Equipment,Dual multi-purpose tower, 820mt rated
Hookload Capacity	Main Side: 600mt Construction Side: 600mt
Drawworks	Main Side: Dual drum 4600Kw/600mt@12falls Construction Side: Single drum 2300kw/600mt@12falls
Top Drive	Huisman Rated capacity : 680mt/ working pressure :7500 psi
Rotary Table	MHWirth GmbH/ Maximum opening : 60-1/2" Rated capacity:1250mt
Active Heave Compensator	NA
Mud Pumps	3*MHWirth* TPK 7 ½” x 14” / 2200 AC-TC-FV Maximum working pressure : 7500psi
Solid Control	4* Derrick DP-626VE 19*4 bbl/min
Standpipe manifold	System working pressure : 10000psi
Choke manifold	Rated for 15,000 Psi

Power Plant	
Main Power	4* Wärtsilä 6L32: 3360KW/ 720 rpm
Emergency Power	1 Cummins Engine, 955kw

STORAGE CAPACITIES	
Fuel Oil.....	1645 m3
Mud Active Processing Tanks	172 m3
Brine	800 m3
Base Oil.....	639 m3
Drill water.....	1698 m3
Potable Water.....	1096 m3
Bentonite/barite.....	280 m3
Cement	280 m3
Sack Storage.....	5000 sacks

BOP Equipment	
Diverter	21 Dril-Quip 500psi
BOP annular (LMRP)	2* HYDRIL/GX 18-10M 18-3/4” 10000psi
BOP rams	Hydril /18-3/4”*15k Psi, 1*double 1*triple Ram;
Riser tensioner	8*Huisman/200 KIPS Dual Riser Tensioner Capacity each tensioner :200kips Maximum stroke : 8.3ft
Moon pool	50m x 14m

Cranes	
Port and Stbd	STDB: 1* DNV Huisman/ 80t@8.6m PORT: 1*DNV Huisman 60mt@8.6m
Aft	NA
BOP handling system	NA

Mooring Equipment	
Mooring Winches	4*Rolls-Royce Marine AS/ Triple Windlasses
Anchor Lines	12EA Anchor Chain /89mm Dia. /2275m
Thrusters	
Dynamic Positioning	N/A

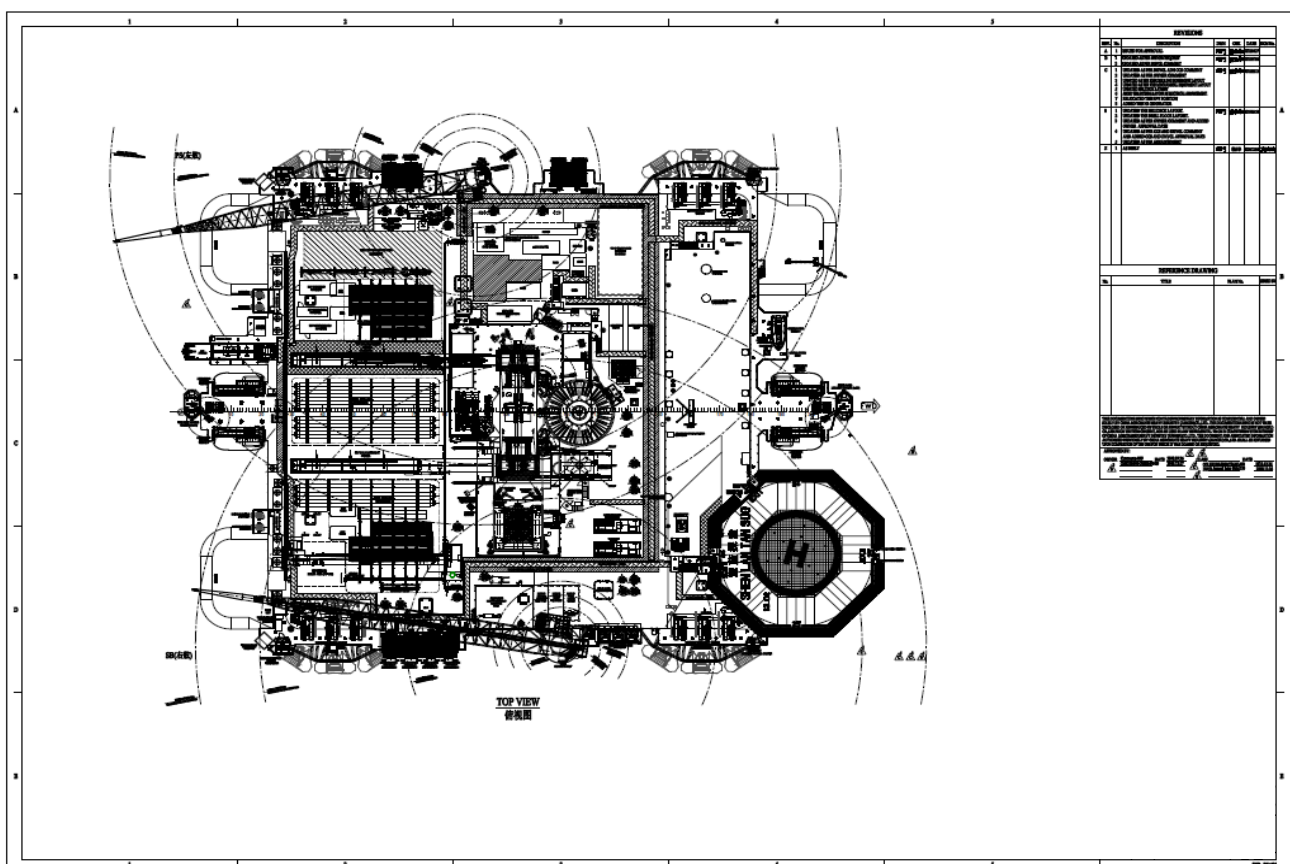
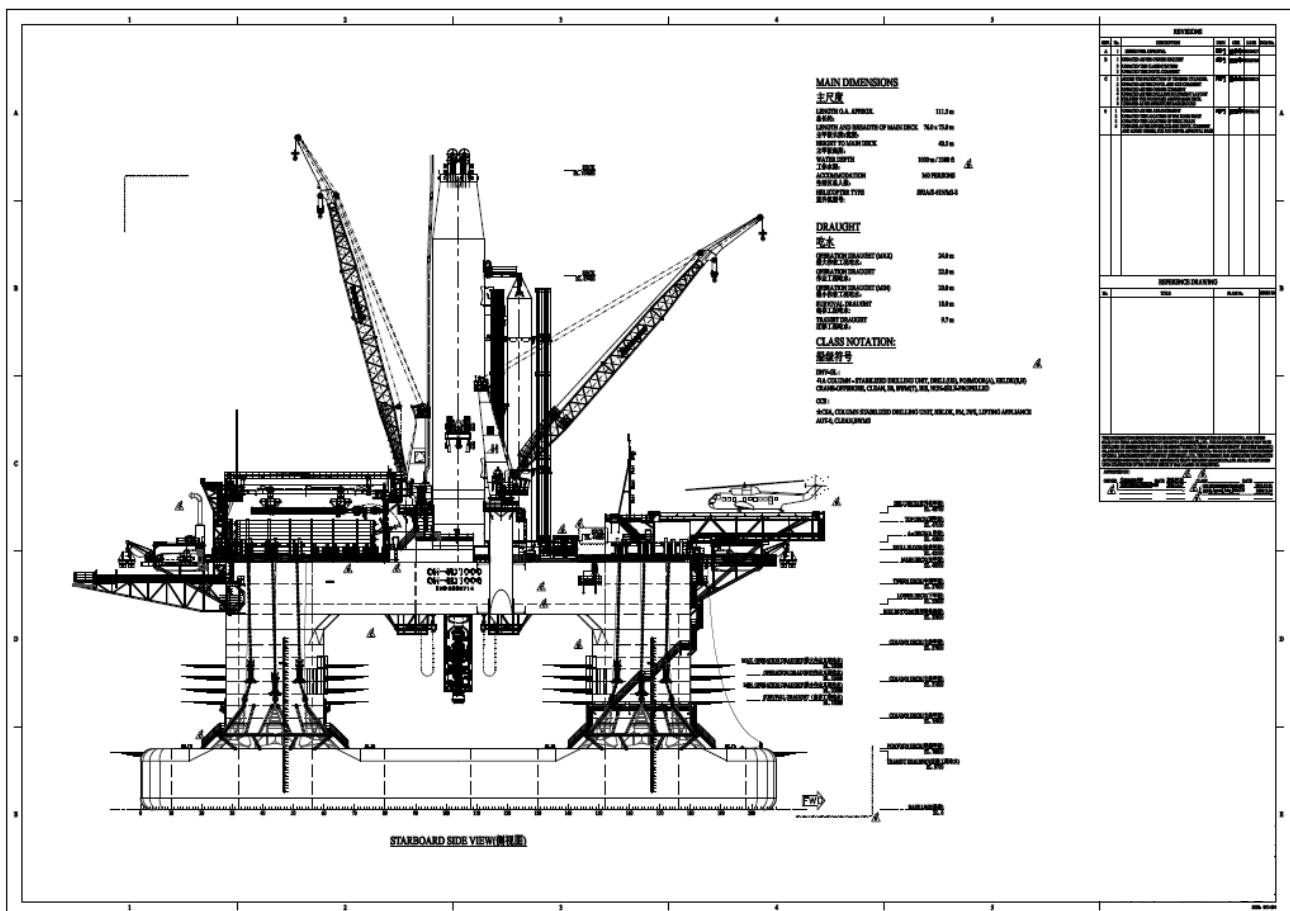
OTHER FEATURES	
Helideck	SIKORSKY S61N/SIKORSKY S92A/MI-8
Station Keeping	

These specifications are intended for general reference purposes only. All equipment shall be operated and maintained at all times, in compliance with COSL DRILLING standard operating manuals,policies and procedures, and within its stated operational limits or continuous rated capacity, in order to assure maximum operational efficiency.



These specifications are intended for general reference purposes only. All equipment shall be operated and maintained at all times, in compliance with COSL DRILLING standard operating manuals,policies and procedures, and within its stated operational limits or continuous rated capacity, in order to assure maximum operational efficiency.

SHEN LAN TAN SUO



These specifications are intended for general reference purposes only. All equipment shall be operated and maintained at all times, in compliance with COSL DRILLING standard operating manuals, policies and procedures, and within its stated operational limits or continuous rated capacity, in order to assure maximum operational efficiency.