

NAN HAI YI HAO



For the additional information please contact:

MarketingDepartmentOf COSL Drilling

Telephone: +86 -10 -8452 2511

Email: sh_coslmarketing@cosl.com.cn

Website: www.cosl.com.cn

Office address:

No.201,Haiyou Street, Yanjiao Developing Zone,
Sanhe City, Hebei Province (Post Code: 065201)



General Description

Design/Generation.....	Robray
ETA-300	
Constructing Shipyard	ROBIN SHIPYARD SINGAPORE
Deliver Year/Upgrades	
1976	
Classification	CCS
Flag	China
Overall Dimensions.....	288ft L×212ft W×27ft D
Legs.....	3 ×
291ft,Triangular	
Usable leg below hull.....	228ft(69.50m)
Spud-can diameter.....	54ft(16.46m)
Draft at loadline(deepest).....	15ft(4.57m)
Displacement at loadline.....	23212kips(10529t)
Cantilever Envelope.....	60ft × ± 12ft
Operating	Water
Depth	150ft(45.72m)
Max. Rating Drilling Depth	20,000ft(6096m)
Accommodation.....	120 beds

Drilling Equipment

Derrick	PYRAMID BOLTED AND GALVANIZED, 147 ft. high, with 30ft. long × 30ft. wide base.
Simultaneous setback + hookload capacity :	1450kips
Drawworks	National 1320 UE /1250kw
Top Drive	Varco IDS-1/ 1,105hp,/ Working5,000psi/500T
Rotary Table	National /C-375
Mud Pumps	Baoji Oil machinery Company / F-1600×3, 1600hp/ea, working5,000psi
Solid Control	4×NOV/VSM-300/ 23 bbl/min (3600 l/min)/each
Drilling Manifold	Rated for 5,000 Psi

Power Plant

Main Power	4×Caterpillar 3516DITA diesel engines rated at 1,650hp, 1,200 rpm
Emergency Power	1×Detroit Diesel 92/500kva/1800rpm

STORAGE CAPACITIES

Fuel Oil.....	4922bbl
Liquid Mud.....	2075bbl
Brine	N/A
Base Oil.....	
N/A	
Drill	
Water.....	5446bbl
Potable Water.....	2588bbl
Bentonite/barite.....	6000ft ³
Cement	6000ft ³
Sack Storage.....	4,000 sacks

BOP Equipment

Diverter	Hydril/29-1/2 in/2000psi
BOP annular	CAMERON/D/5000psi/13-5/8"
BOP rams	3×Varco Shalfer, 13-5/8"×10k Psi;
BOP handling	2×J.D.NEUHAUS GMBH & CO.KG , safe working load at37.5MT each;

Cranes

Port&Stbd	2×Amclyde Unit Crane/UNIT-10000HD/25T/25ft
Port AFT	1×National Oilwell/60DNS110-1.75/46t/21.3ft /4 Lines
Knuckle-Boom	N/A

Mooring Equipment

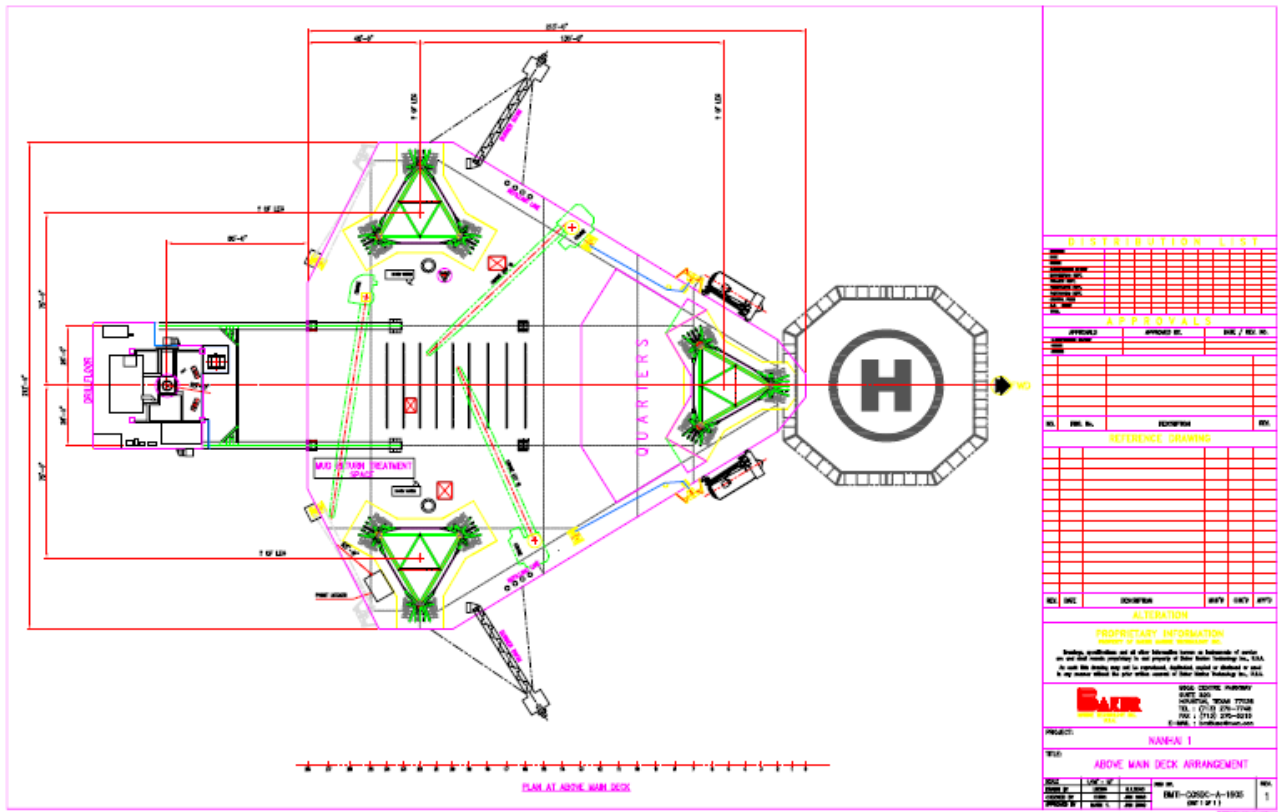
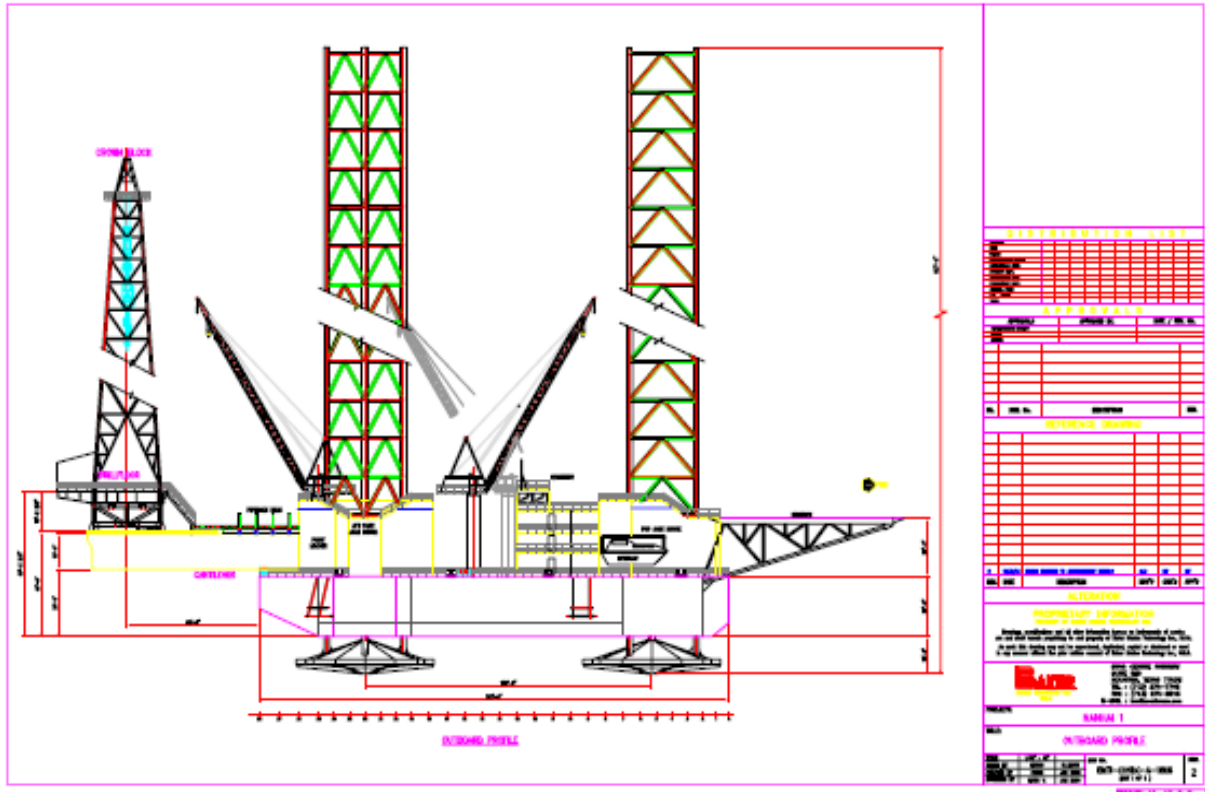
Mooring Winches	4×LETOURNEAU CO.W-1500-TS /75hp/rated pull: 22.5tons.
Anchor Lines	4×900m×1-1/4", 6 X 19 IWRC
Anchors	4×Yangyuan chuanbo shebei co.,LTD

OTHER FEATURES

Helideck	Rated for Sikorsky S-61 helicopter
Tension System	N/A

These specifications are intended for general reference purposes only. All equipment shall be operated and maintained at all times, in compliance with COSL DRILLING standard operating manuals,policies and procedures, and within its stated operational limits or continuous rated capacity, in order to assure maximum operational efficiency.

NAN HAI YI HAO (NH1)



These specifications are intended for general reference purposes only. All equipment shall be operated and maintained at all times, in compliance with COSL DRILLING standard operating manuals, policies and procedures, and within its stated operational limits or continuous rated capacity, in order to assure maximum operational efficiency.