

HAI YANG SHI YOU 936



For the additional information please contact:

MarketingDepartmentof COSL Drilling

Telephone: +86 -10 -8452 2511

Email: sh_cosldrillingmarket@cosl.com.cn

Website: www.cosl.com.cn

Office address:

No.201,Haiyou Street, Yanjiao Developing Zone,
Sanhe City, Hebei Province (Post Code: 065201)



General Description

Design/Generation	Marine Structure Consultants/CJ46-X100-D
Constructing Shipyard	China Merchants Heavy Industry(Shenzhen)Co.Ltd
Deliver Year/Upgrades	2009
Classification	ABS&CCS
Flag	China
Overall Dimensions	214.07ft L*203.4ft W*26.25ft D
Legs	434.06ft. long; Triangular
Usable leg below hull	359.86ft
Spudcan diameter	45.34ft
Draft at loadline	16.4ft
Displacement at loadline	34565.73kips
Drilling VL	7718kips
Cantilever Envelope	70ft± 19.68ft
Operating Water Depth	300ft
Max. Rating Drilling Depth	30,000ft
Accommodation	120 beds

Drilling Equipment

Derrick	NOV/NOV 170'x35'x40'x18' TOP 1500000 Hook , 170 ft. high, with 35ft. long * 40ft. wide base.
Simultaneous setback + hook-load capacity	Max.1135t(2505.5 kips)
Drawworks	NOV D3000AC , NOV BAYLOR/CM628TUT119EL 3*1,150HP,AC
Top Drive	NOV HPS-04 750-AC-KT-RD, 1,150HP, 7,500PSI
Rotary Table	NOV/RST495-2G
Tubular Handling	NOV/ HR-III-XY-F-S racker with catwalk machine
Mud Pumps	NOV 14-P-220*3, 2,200HP/ea, 7,500PSI
Solid Control	4* Derrick FLC 504M shale shakers
Drilling Manifold	Neway 5-1/8 10K×3-1/16 10K PSI W.P. Standpipe Manifold Neway 3-1/16 15,000 PSI W.P. Cement Manifold Neway 4-1/16" 10K-5K Chock and Kill Manifold

Power Plant

Main Power	5* Caterpillar/3516B-HD diesel engines rated at 1,603KW, 1,200 RPM
Emergency Power	1 X Caterpillar/3508B diesel engine rated at 968KW, 1,800 RPM

STORAGE CAPACITIES

Fuel Oil	3868bbl
Liquid Mud	4,553bbls
Brine	264bbls
Base Oil	1,264bbls
Drill Water	22377bbls
Potable Water	3,698bbls
Bentonite/barite	7486.72 ft ³
Cement	7486.72 ft ³
Sack Storage	5,000 sacks

BOP Equipment

Diverter	GE/KFDJ-500 49-1/2"
BOP annular	CAMERON/DL 13-5/8"*10000PSI WP Annular
BOP rams	CAMERON/U, 13-5/8"*10k PSI, Dual Ram BOPs;
BOP handling	2* Ingersoll Rand/ BHS200M/E08011T, safe working load at 100MT each;

Cranes

Port&Stbd	2* LIEBHERR CBO 3600-50Litronic@ Port&Stbd 1* LIEBHERR CBO 3600-50Litronic@ Lift Rear
Fwrd	N/A
Knuckle-Boom	1*NOV KMCVCT-1891-9-25@Cantilever

Mooring Equipment

Mooring Winches	4* MEP/AT35000/E/SIMPLEX Electric, 35MT rated pull capacity.
Anchor Lines	Guizhou wire rope company/6×36WS+IWR-ZS/ Φ38MM*914M
Anchors	Jiangsu Rugao marine HYD-14/ 3.5T

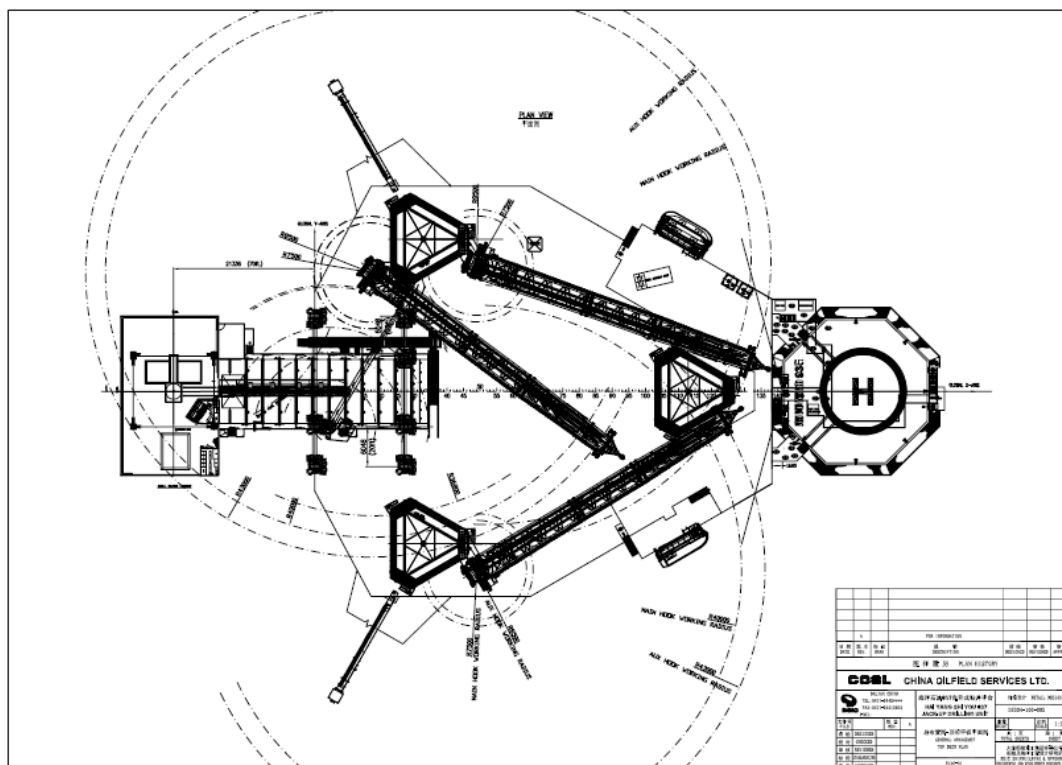
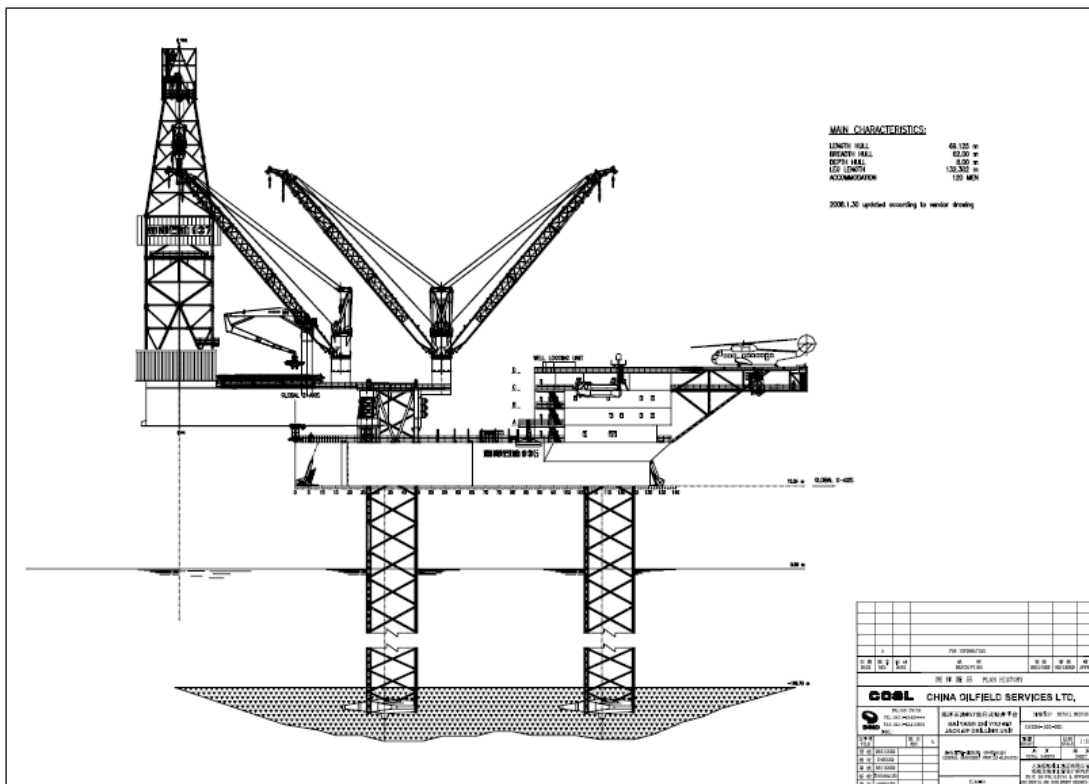
OTHER FEATURES

Helideck	Diameter 22.2m/allowable take-off weight 9.3T
Tension System	PH Hydraulic&Engineering PTE LTD/225 T CTU,225 metric tons for raiser tensioner at 2500psi

These specifications are intended for general reference purposes only. All equipment shall be operated and maintained at all times, in compliance with COSL DRILLING standard operating manuals,policies and procedures, and within its stated operational limits or continuous rated capacity, in order to assure maximum operational efficiency.

These specifications are intended for general reference purposes only. All equipment shall be operated and maintained at all times, in compliance with COSL DRILLING standard operating manuals, policies and procedures, and within its stated operational limits or continuous rated capacity, in order to assure maximum operational efficiency.

HAI YANG SHI YOU 936 (HYSY936)



These specifications are intended for general reference purposes only. All equipment shall be operated and maintained at all times, in compliance with COSL DRILLING standard operating manuals,policies and procedures, and within its stated operational limits or continuous rated capacity, in order to assure maximum operational efficiency.