

WAN ZUAN 1



For the additional information please contact:

MarketingDepartmentof **COSL Drilling**

Telephone: +86 -10 -8452 2511

Email: sh_cosl_drillingmarket@cosl.com.cn

Website: www.cosl.com.cn

Office address:

No.201,Haiyou Street, Yanjiao Developing Zone,
Sanhe City, Hebei Province (Post Code: 065201)



General Description	
Design/Generation	Friede & Goldman/Super M2
Constructing Shipyard	Yantai CIMC Raffles Offshore Ltd.
Deliver Year/Upgrades	2013
Classification	ABS&CCS
Flag.....	China
Overall Dimensions	272.5ft L x200ft W x25ft D
Legs.....	3*411ft. long; Triangular
Usable leg below hull	110m(360ft)
Spud can diameter	39.67ft/1,169 ft ²
Draft at load line (deepest).....	5.172m(17ft)
Light ship.....	20,029kips
Displacement	25,179kips
Drilling Variable Load	6,794 kips
Cantilever Envelope	50ft X ± 15ft
Operating Water Depth	300ft/30ft
Max. Rating Drilling Depth	30,000ft
Accommodation	110 beds

Drilling Equipment	
Derrick	1 x TSC/DK1500-A, 160 ft. high, with 40ft. long * 35ft. wide base.
Simultaneous setback + hookload capacity	2200kips, maximum
Drawworks	1 x TSC/D3000, 2*1,500 HP
Top Drive	1 x CANRIG/1275AC-681, 1,150 HP , 7,500psi/750st
Rotary Table	1 x JJC/SW12-G1
Pipe Handling	1 x TSC/ BRC10-A/ 3½ in. to 9 ¾ in.
Mud Pumps	3 x TSC/WF2000, 2,000HP, 7,500psi
Solid Control	5 x NOV/BRANDT VSM 300 shale shakers
Drilling Manifold	Rated for 7,500 Psi

Power Plant	
Main Power	5 x Caterpillar 3516B-HD diesel engines rated at 1,603 KW, 1,200 RPM
Emergency Power	1 x Caterpillar 3412C diesel engine rated at 620KW, 1,800 RPM

Storage Capacities	
Fuel Oil.....	4,139bbls
Liquid Mud.....	4,025bbls
Brine	899bbls
Base Oil.....	899bbls
Drill Water.....	6,464bbls
Potable Water.....	2,365bbls
Bentonite/barite.....	7,204ft ³
Cement	4,802ft ³
Sack Storage.....	5,000 sacks

BOP Equipment	
Diverter	1 x Vetco Gray Pte. Ltd./KFDJ-500, 49-1/2" , 500psi
BOP annular	1 x GuangHan ChuanYou / DL Annular , 13-5/8"*10K Psi
BOP rams	1 x CAMERON / DL Annular , 21-1/4"*2k Psi 1 x CAMERON / U-TYPE, Single & Double Ram 13-5/8"*15k Psi 1 x CAMERON / U-TYPE, Single & Double Ram 21-1/4" 2k Psi
BOP handling	2x TSC/ 2x BOXER chain hoists, SWL:150MT

Cranes	
Port & Stbd	2 x MEP(Italy) / GN 50/8 DH /Diesel driven, Main hoist: One 120ft Boom length: 50T@8m, 12T@33m, One 100ft Boom length: 50T@8m, 12T@26.9m, Auxiliary hoist: 10T
Knuckle-Boom	N/A

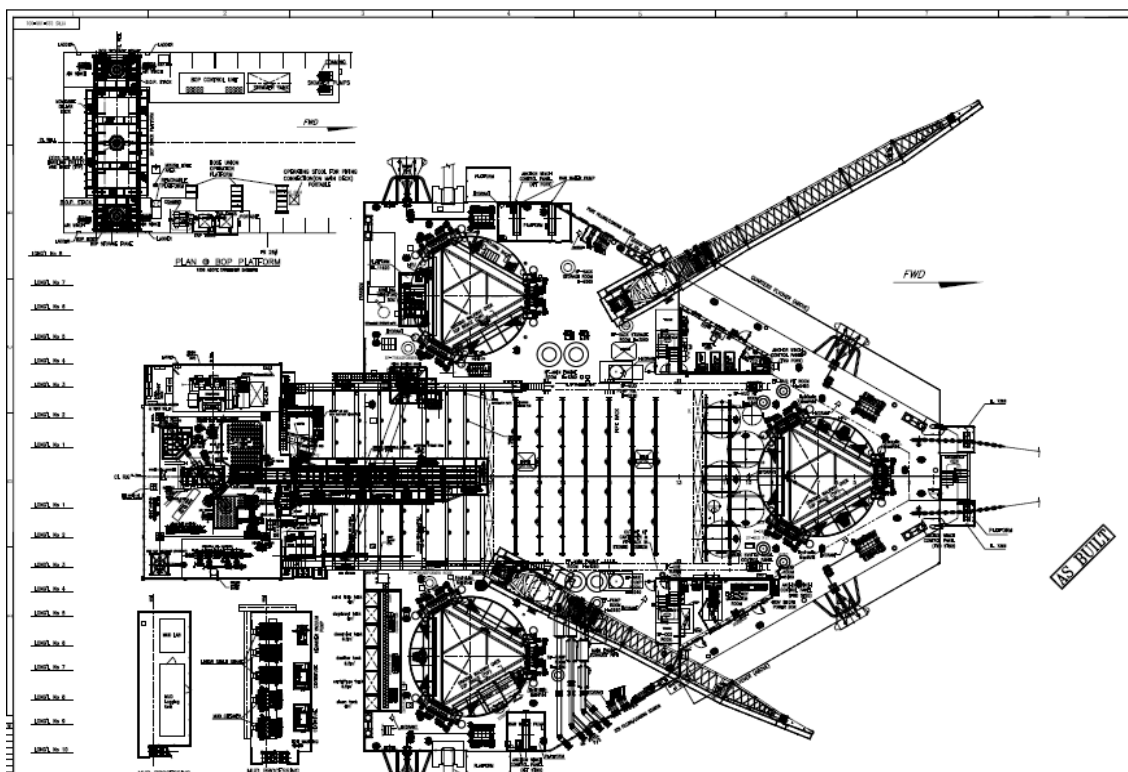
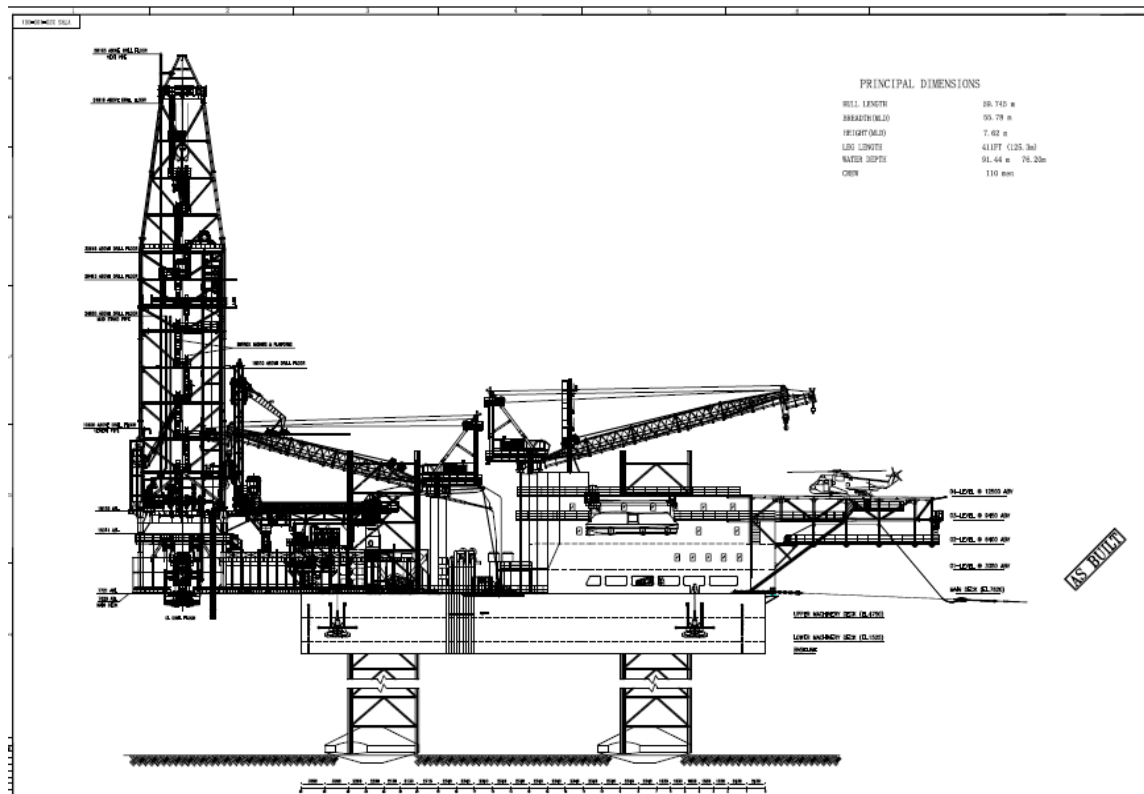
Mooring Equipment	
Mooring Winches	4 x Nantong LiWei/SDC300, electric,
Anchor Lines	4 x JULI/6 x 36SW+IWR, 450m
Anchors	4 x JIANGSU YANGYUAN / HHP. JYS

OTHER FEATURES	
Helideck	Designed for helicopter Sikorsky S61 N Helicopter, 9.3 M. Tons + 0.21 M. Tons/m2
Tension System	1x GUANGDONG JINGYIN/JY-BOPZ150, 21MPa, 120T

These specifications are intended for general reference purposes only. All equipment shall be operated and maintained at all times, in compliance with COSL DRILLING standard operating manuals,policies and procedures, and within its stated operational limits or continuous rated capacity, in order to assure maximum operational efficiency.

These specifications are intended for general reference purposes only. All equipment shall be operated and maintained at all times, in compliance with COSL DRILLING standard operating manuals,policies and procedures, and within its stated operational limits or continuous rated capacity, in order to assure maximum operational efficiency.

WAN ZUAN 1



These specifications are intended for general reference purposes only. All equipment shall be operated and maintained at all times, in compliance with COSL DRILLING standard operating manuals, policies and procedures, and within its stated operational limits or continuous rated capacity, in order to assure maximum operational efficiency.