

HAI YANG SHI YOU CHAO REN



For the additional information please contact:

MarketingDepartmentof **COSL Drilling**

Telephone: +86 -10 -8452 2511

Email: sh_cosl_drillingmarket@cosl.com.cn

Website: www.cosl.com.cn

Office address:

No.201,Haiyou Street, Yanjiao Developing Zone,
Sanhe City, Hebei Province (Post Code: 065201)



General Description

| | |
|----------------------------|---|
| Design/Generation | Baker Marine Pacific Class 375 |
| Constructing Shipyard | PPL Shipyard Pte Ltd, Singapore |
| Deliver Year/Upgrades | 2007 |
| Classification | CCS |
| Flag | China |
| Overall | |
| Dimensions | 72.1m(236.560ft)×68.4m(224.409ft)×74.86m(27.887ft) |
| Legs | 3 x 154.349m(506.393ft); Triangular cross section leg structure |
| Usable leg below hull | 132.550m(435ft) |
| Spudcan diameter | 16.9m (55.446ft) |
| Draft at loadline | 5.944m(19.5ft) |
| Displacement | 19945.035t(43978.802kips) |
| Drilling Variable Load | 3401t(7,500 kips) |
| Cantilever Envelope | 21.34m(70ft)* ± 4.5m(15ft) |
| Operating Water Depth | 114.3m(375ft) |
| Max. Rating Drilling Depth | 9144m(30,000ft) |
| Accommodation | 120 beds |

Drilling Equipment

| | |
|--|--|
| Derrick | National Oilwell Varco / Bolted H-beam |
| Simultaneous setback-hookload capacity | 1179t(2600 kips) |
| Drawworks | National Oilwell Varco / D3000AC |
| Top Drive | National Oilwell Varco / HPS-750-E-AC-SG working pressure :7,500psi, Rated capacity :750st |
| Rotary Table | National Oilwell Varco / D-495 with Adapter Bushing for 37-1/2" Master Bushing |
| Pipe Handling | National Oilwell Varco / X-Y HydraRacker/ Racking Gripper Head:3½ to 9¼ / 22,000lb/ Pick-up Elevator,2 7/8 to 13 5/8 |
| Mud Pumps | 3*NOV*14-P-220, 2,200hp/ea, 7,500psi |
| Solid Control | 4* National Oilwell Varco / Brandit / VSM300 National Oilwell Varco / GM250-VS-PPL |
| Gumbo | |
| Drilling Manifold | Rated for 7,500 Psi |

Power Plant

| | |
|-----------------|--|
| Main Power | 5* Caterpillar 3516B HD diesel engines rated at 2,150hp, 1,200 rpm |
| Emergency Power | 1 X Caterpillar 3508 DITA/ 1008hp, 1,800 rpm |

STORAGE CAPACITIES

| | |
|------------------|-------------------------------------|
| Fuel Oil | 665.097 m ³ (4,183bbls) |
| Liquid Mud | 667.164 m ³ (4,196bbls) |
| Brine | 208.29 m ³ (1,310bbls) |
| Base Oil | 202.566m ³ (1,274bbls) |
| Drill water | 3485.757m ³ (21,923bbls) |
| Potable Water | 569.061m ³ (3,579bbls) |
| Bentonite/barite | 165m ³ (5,827ft3) |
| Cement | 165m ³ (5,827ft3) |
| Sack Storage | 5,000(@50lb ea) sacks |

BOP Equipment

| | |
|--------------|--|
| Diverter | Vetco Gray / KFDJ-500 Standard bore / 500psi |
| BOP annular | 1* Rongsheng Machinery Manufacture Ltd/ 13-5/8" 10K |
| BOP rams | 1* Guanghan Well-Control Petroleum Equipment Co.Ltd/ 13-5/8" 15K, Double Ram; 2* Rongsheng Machinery Manufacture Ltd/ 13-5/8" 15K, Single Ram; |
| BOP handling | 2*Ingersoll RandBHS200M/E11001 / Pneumatic Chain Hoists with pendant controls , safe working load at 100MT each; Vertical travel length 30' (9.1M) |

Cranes

| | |
|--------------|---|
| Portforward | 1*API 2C and ABS/Baker Marine Kingpost Crane /BMC 2250E / 55.1 st / 25 ft /15.0 st / 127.5 ft |
| Stbd | 1*API 2C and ABS/Baker Marine Kingpost Crane /BMC 1600E/ 45.0 st / 25 ft/9.5 st / 106.5 ft |
| Port aft | 1 *API 2C and ABS/Baker Marine Kingpost Crane /BMC 900D/ 25.0 st / 20 ft /7.5 st / 102.6 ft |
| Knuckle-Boom | 1* API 2C and ABS /National Oilwell Varco / Knuckle boom pipehandling crane with gripper yoke for 3½" to 20" tubulars |

Mooring Equipment

| | |
|--------------|--|
| Mooring | 4*Baker Marine single drum /42KW/Dual Speed ,electric, |
| Winches | 31.75 tons stall pull, 63.5tons holding . |
| Anchor Lines | 4* RRL galvanized/ 1 ½in/ 3,000ft |
| Anchor | |
| Flippers | 4* Flipper Delta ,6t |

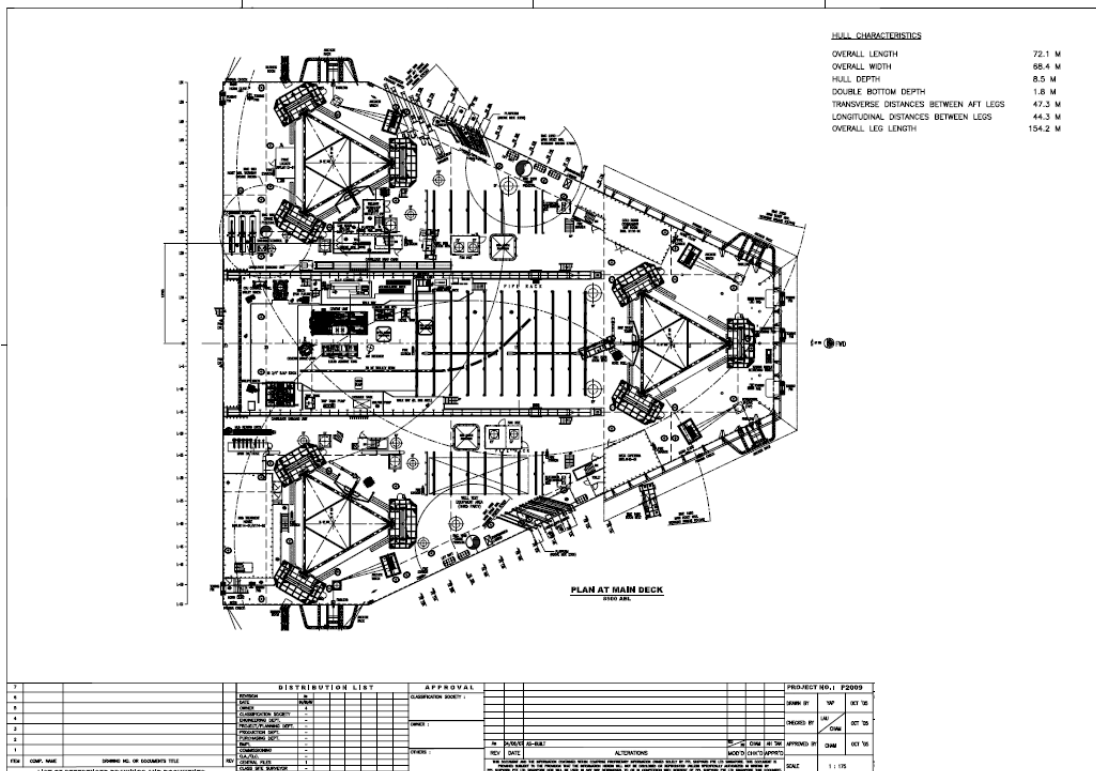
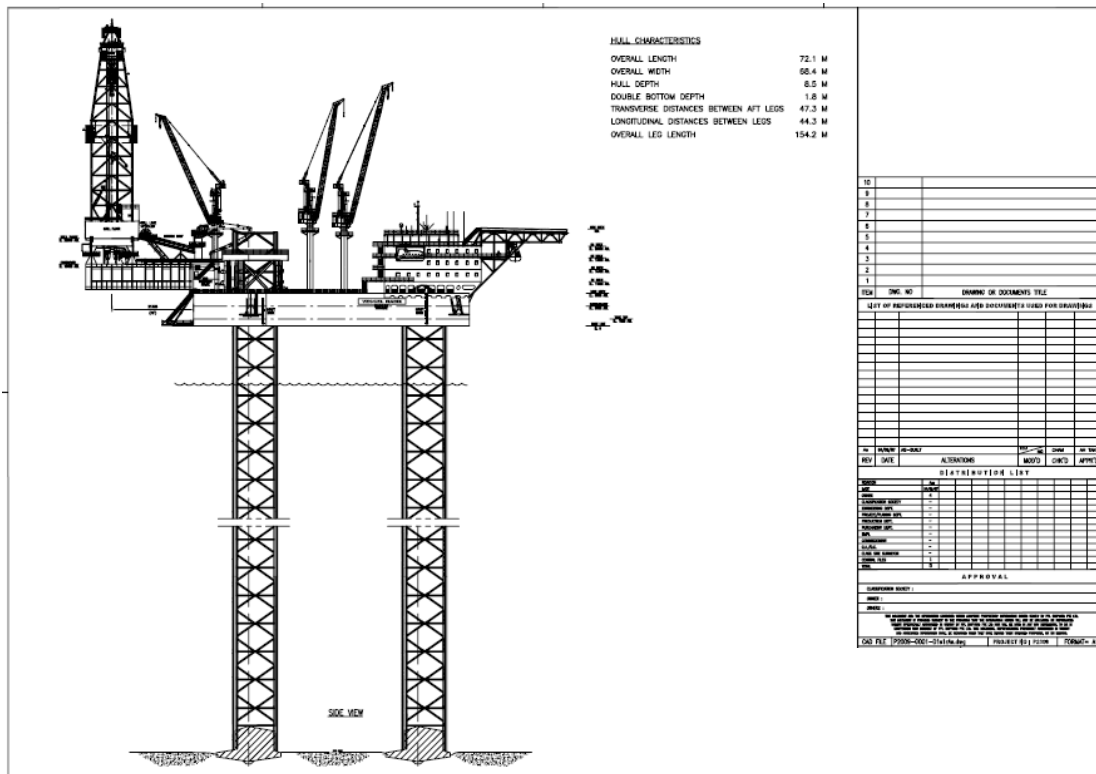
OTHER FEATURES

| | |
|----------------|--|
| Helideck | Rated for SikorskyS61N helicopter |
| Tension System | National Oilwell Varco / Hinged Push-up Ring on Conductor Platform, with 4 Hydraulicand 4 Centralizers / 250ST |

These specifications are intended for general reference purposes only. All equipment shall be operated and maintained at all times, in compliance with COSL DRILLING standard operating manuals,policies and procedures, and within its stated operational limits or continuous rated capacity, in order to assure maximum operational efficiency.

These specifications are intended for general reference purposes only. All equipment shall be operated and maintained at all times, in compliance with COSL DRILLING standard operating manuals, policies and procedures, and within its stated operational limits or continuous rated capacity, in order to assure maximum operational efficiency.

HAI YANG SHI YOU CHAO REN



These specifications are intended for general reference purposes only. All equipment shall be operated and maintained at all times, in compliance with COSL DRILLING standard operating manuals, policies and procedures, and within its stated operational limits or continuous rated capacity, in order to assure maximum operational efficiency.