

COSL CONFIDENCE



For the additional information please contact:

MarketingDepartmentof **COSL Drilling**

Telephone: +86 -10 -8452 2511

Email: sh_cosl drillingmarket@cosl.com.cn

Website: www.cosl.com.cn

Office address:

No.201,Haiyou Street, Yanjiao Developing Zone,

Sanhe City, Hebei Province (Post Code: 065201)



General Description

Design/Generation	Baker Marine Pacific Class 375 Self-Elevating
Constructing Shipyard	PPL SHIPYARD PTE LTD, Singapore
Deliver Year/Upgrades	2009
Classification	ABS
Flag	Singapore
Overall Dimensions	236.560ft L × 224.409ft W × 27.887ft D
Legs	3 x 154.349m(506.393ft); Triangular cross section leg structure
Usable leg below hull	132.550m(435ft)
Spudcan diameter	16.9m (55.446ft)
Draft at loadline	5.944m(19.5ft)
Displacement	19932.00t(43950.06kips)
Drilling Variable Load	3324.83t(7,330 kips)
Cantilever Envelope	21.34m(70ft)* ± 4.5m(15ft)
Operating Water Depth	114.3m(375ft)
Max. Rating Drilling Depth	9144m(30,000ft)
Accommodation	120 beds

Drilling Equipment

Derrick	NOV/TOP:18x18' BASE:35'x35' HEIGHT: 160 ft. MAX RATED STATIC HOOKLOAD: 750 SHORT TON
Simultaneous setback-hookload capacity	2400 kips
Drawworks	National Oilwell Varco / D3000AC
Top Drive	National Oilwell Varco / HPS-750-E-AC-SG working pressure :7,500psi, Rated capacity :680mt
Rotary Table	National Oilwell Varco / D-495 with Adapter Bushing for 37-1/2" Master Bushing
Pipe Handling	National Oilwell Varco / X-Y HydraRacker/ Racking Gripper Head:3½ to 9½ / 22,000lb/ Pick-up Elevator,2 7/8 to 13 5/8
Mud Pumps	3*NOV*14-P-220, 2,200hp/ea, 7,500psi
Solid Control	4* DERRICK HYPERPOOL
Gumbo	National Oilwell Varco / GM250-VS-PPL
Drilling Manifold	Rated for 7,500 Psi

Power Plant

Main Power	5* Caterpillar 3516B HD diesel engines rated at 2,150hp(1,603KW), 1,200 rpm
Emergency Power	1 X Caterpillar 3508 DITA/ 1298hp(968KW), 1,800

STORAGE CAPACITIES

Fuel Oil	422.501 m ³ (3,654bbls)
Liquid Mud	667.164 m ³ (4,196bbls)
Brine	164.42 m ³ (1,422bbls)
Base Oil	202.566m ³ (1,274bbls)
Drill water	3485.757m ³ (21,923bbls)
Potable Water	410.939m ³ (3,554bbls)
Bentonite/barite	165m ³ (5,827ft3)
Cement	165m ³ (5,827ft3)
Sack Storage	5,000(@50lb ea) sacks

BOP Equipment

Diverter	Vetco Gray / KFDJ-500 Standard bore / 500psi
BOP annular	CAMERON/DL 13-5/8"*10000PSI WP Annular
BOP rams	CAMERON/U, 13-5/8"*10k PSI, Dual Ram BOPs;
BOP handling	2 * Ingersoll RandBHS200M/E11001 / Pneumatic Chain Hoists with pendant controls , safe working load at 100MT each; Vertical travel length 30' (9.1M)

Cranes

Portforward Stbd	1 * API 2C and ABS/Baker Marine Kingpost Crane /BMC 2250E 55.1 st / 25 ft /15.0 st / 127.5 ft 1 * API 2C and ABS/Baker Marine Kingpost Crane /BMC 1600E 45.0 st / 25 ft/9.5 st / 106.5 ft
Port aft	1 * API 2C and ABS/Baker Marine Kingpost Crane /BMC 900E/ 25.0 st / 20 ft /7.5 st / 102.6 ft
Knuckle-Boom	1 * API 2C and ABS /National Oilwell Varco / Knuckle boom pipehandling crane with gripper yoke for 3½" to 20" tubulars

Mooring Equipment

Mooring	4*Baker Marine single drum /26KW/Dual Speed, electric,
Winches	31.75 tons stall pull, 63.5tons holding.

Anchor Lines	4* RRL galvanized/ 1 ½in/ 3,000ft
Anchors	4* Flipper Delta ,6t

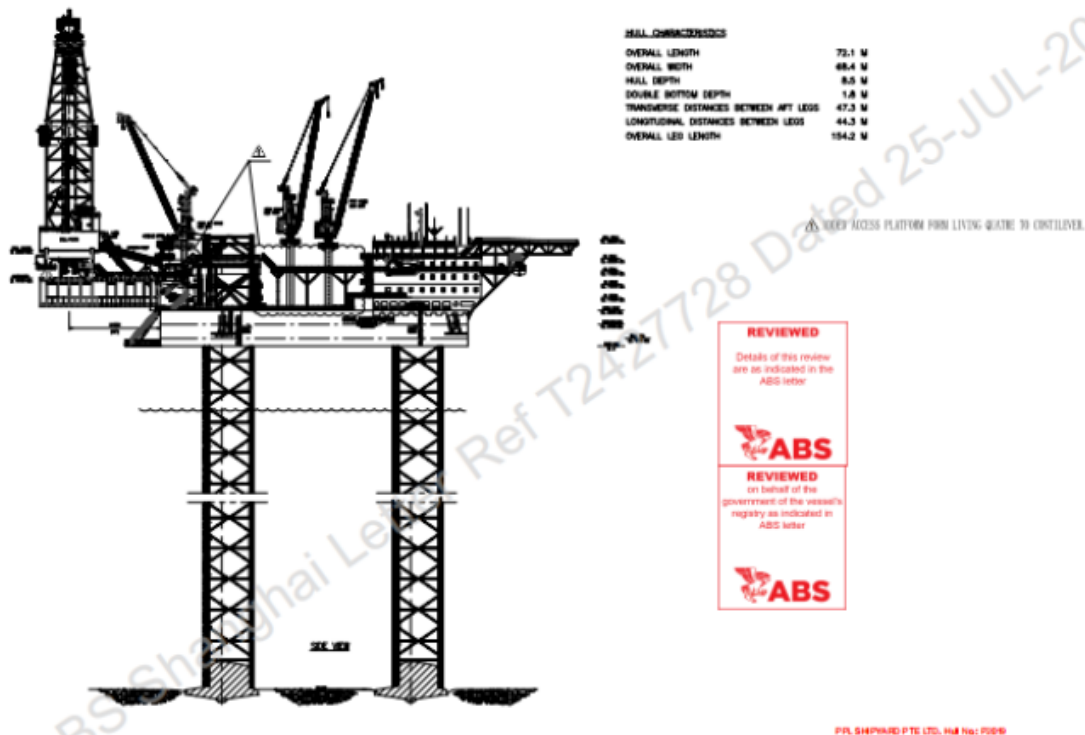
OTHER FEATURES

Helideck	Diameter 22.2m/allowable take-off weight 9.3T
Tension System	National Oilwell Varco / 225 T CTU,225 metric tons for raiser tensioner at 2500psi

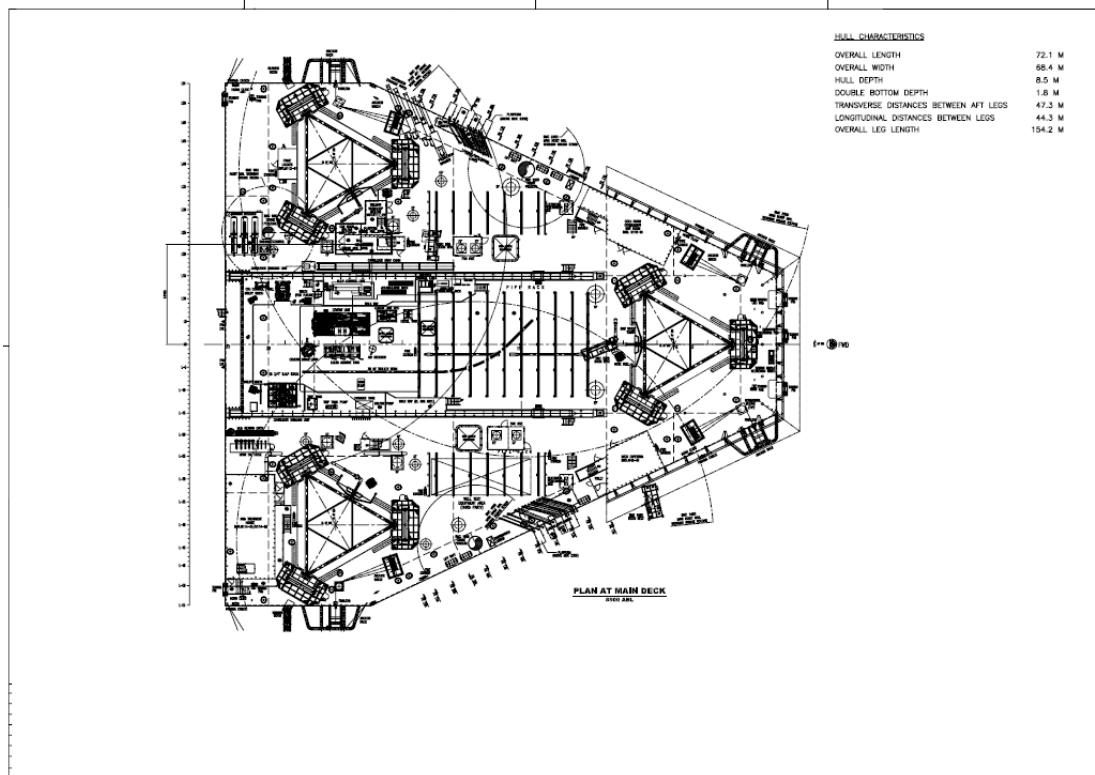
These specifications are intended for general reference purposes only. All equipment shall be operated and maintained at all times, in compliance with COSL DRILLING standard operating manuals,policies and procedures, and within its stated operational limits or continuous rated capacity, in order to assure maximum operational efficiency.

rpm

COSL CONFIDENCE



These specifications are intended for general reference purposes only. All equipment shall be operated and maintained at all times, in compliance with COSL DRILLING standard operating manuals, policies and procedures, and within its stated operational limits or continuous rated capacity, in order to assure maximum operational efficiency.



These specifications are intended for general reference purposes only. All equipment shall be operated and maintained at all times, in compliance with COSL DRILLING standard operating manuals, policies and procedures, and within its stated operational limits or continuous rated capacity, in order to assure maximum operational efficiency.