

DA ZHOU

For the additional information please contact:

MarketingDepartmentOf COSL Drilling

Telephone: +86 -10 -8452 2511

Email: sh_cosl_drillingmarket@cosl.com.cn

Website: www.cosl.com.cn

Office address:

No.201,Haiyou Street, Yanjiao Developing Zone,
Sanhe City, Hebei Province (Post Code: 065201)



General Description	
Design/Generation	KFELS MOD B Class Unit
Constructing Shipyard	Keppel FELS Limited, Singapore
Deliver Year/Upgrades	2006
Classification	CCS
Flag	China
Overall Dimensions	71.32(234)L*63.4(208)W*7.8(25.52)D
Legs.....	3x157.58m(3x517ft)
Usable leg below hull	140.21m(460ft)
Spudcan diameter	14.39m(47.2ft)
Draft at load line	4.87m(16ft)
Displacement at loadline.....	14404mt(31754.85kips)
Drilling VL :	3402mt(7500kips)
Cantilever Envelope	70ft*±15ft
Operating	Water
Depth	min9.14m(30ft)/max121.92m(400ft)
Max. Rating Drilling Depth	9144m(30000ft)
Accommodation	118 beds

Drilling Equipment	
Derrick	National Oilwell Varco/Woolslayer Bolted H-beam
Simultaneous	Hook Load: 453.58 mT(1000 kips), Rotary Load:
setback + hookload	453.58 mT(1000 kips); Set Back Total:453.58
capacity :	mT(1000 kips)
Drawworks	NOV / ADS-10T/3*1150hp
Top Drive	National Oilwell Varco TDS-8SA, 1,150hp, 7500psi/Max:95,000 ft. lbs/continuous:62,250 ft. lb/270 RPM
Rotary Table	National / RST 495-3G/907T
Pipe Handling	NOV / PRS-8i/NOV PRS-8i pipe handling system with dedicated pipe handling crane and offline stand building capacity capable of handling 3-1/2" to 9-3/4". Rated capacity 22,000 lbs.
Mud Pumps	3* LEWCO /W-2215/ 2,200hp/EA, 7,500psi
Solid Control	5*NOV / Derrick / Dual Pool 626
Drilling Manifold	ANSON 5"API 7.5K Standpipe Manifold ANSON 3-1/16"API 15K Cement Manifold ANSON 3-1/16"API 15K Chock and Kill Manifold

Power Plant	
Main Power	5*CAT 3516B-HD diesel engines rated at 2,150hp, 1,200 rpm
Emergency Power	1 *CAT 3508B diesel engine rated at 915hp 1,200 rpm

Storage Capacities	
Fuel Oil.....	818.978m3(5145bbl)
Liquid Mud.....	761.55m3(4790bbl)
Brine	64.23m3(404bbl)
Base Oil.....	64.23m3(404bbl)
Drill Water.....	1682.08m3(10,580bbl)
Potable Water.....	407.8m3(2565bbl)
Bentonite/barite.....	196m3(1232.8bbl)
Cement	196m3(1232.8bbl)
Sack Storage.....	5,000 sacks

BOP Equipment	
Diverter	GE OIL and GAS / KFDJ-500,500psi
BOP annular	Shaffer/Wedged Spherical, 18-3/4"*10,000 Psi,
BOP rams	2*Hua Bei Rong Sheng / Double Ram, 13-5/8"*10k Psi;
BOP handling	2*Patriot /Pneumatic Chain Hoists with fixed control panel, safe working load at 68MT each;

Cranes	
Port Forward,	3* Favelle Favco / API Spec 2C, ABS Guide for
Port Aft,	Certification of Cranes/7.5 / 10 K/44.6T@6.09m/
starboard	10.8T@36.58m
Pipehandling	NOV/KMCVCT 1891/12T@12m,5.5T@25m
Crane	

Mooring Equipment	
Mooring Winches	4* Brohl/25.49T rated pull capacity.
Anchor Lines	4*Bridon or equivalent/6 x 36 IWRL
Anchors	4*Delta Flipp

Other Features	
Helideck	Rated for sikorsky S-61N

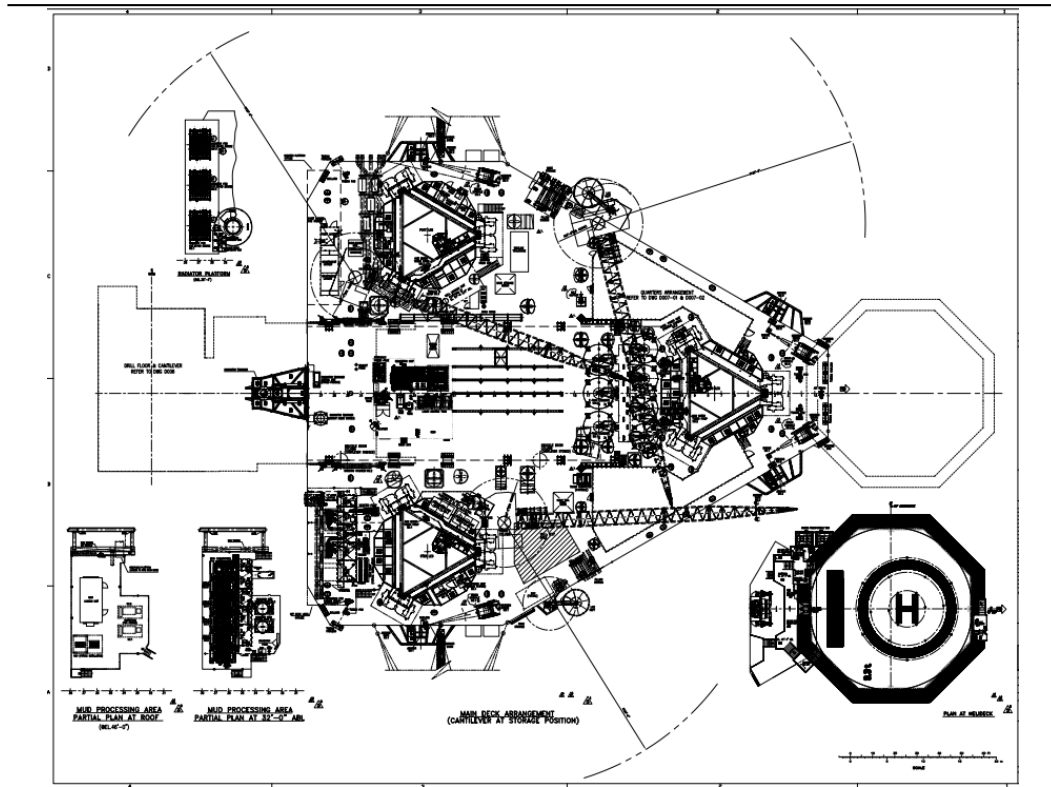
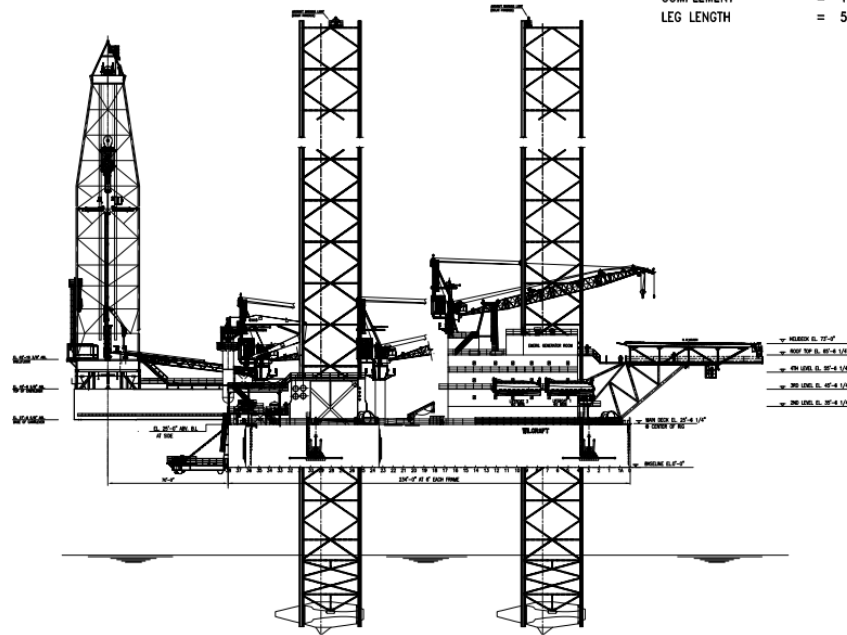
These specifications are intended for general reference purposes only. All equipment shall be operated and maintained at all times, in compliance with COSL DRILLING standard operating manuals,policies and procedures, and within its stated operational limits or continuous rated capacity, in order to assure maximum operational efficiency.



DA ZHOU

MAIN PARTICULARS:

VESSEL LENGTH	= 234 FT
VESSEL WIDTH	= 208 FT
VESSEL DEPTH AT SIDE	= 25 FT
COMPLEMENT	= 112 MEN
LEG LENGTH	= 517 FT



These specifications are intended for general reference purposes only. All equipment shall be operated and maintained at all times, in compliance with COSL DRILLING standard operating manuals, policies and procedures, and within its stated operational limits or continuous rated capacity, in order to assure maximum operational efficiency.