

SINOCEAN AUSPICIOUS

For the additional information please contact:

Marketing Department of COSL Drilling

Telephone: +86 -10 -8452 2511

Email: sh_cosldrillingmarket@cosl.com.cn

Website: www.cosl.com.cn

Office address:

No.201, Haiyou Street, Yanjiao Developing Zone,
Sanhe City, Hebei Province (Post Code: 065201)



General Description	
Design/Generation	JU2000E
Constructing Shipyard	Shanghai Waigaoqiao Shipbuilding Co,Ltd
Deliver Year/Upgrades	2014
Classification	ABS&CCS
Flag	PANAMA
Overall Dimensions	98.71mL*76m W x9.45m D
Legs	3 x166.98m) ;Triangular
Usable leg below hull	149m
Spudcan diameter	17.98 m
Transit Draft	21.5ft
Displacement	22,994MT
Variable Load	6,577 mt
Cantilever	
Envelope	75ft*±15ft
Operating Water Depth	400ft
Max. Rating Drilling Depth	35,000ft
Accommodation	140 beds

Drilling Equipment	
Derrick	Cameron DD 1000-III 40×40×18×19
Hookload Capacity	998 mt
Drawworks	Cameron UltraHoist 1060-6000 Drawworks
Top Drive	Cameron STD-1000-AC-2M ,1715KW
Rotary Table	Cameron 49-1/2"
Tubular Handling	Cameron Smart racker III-P-AC with catwalk machine
Mud Pumps	3*Aker Solution / Mud pumps TPK 7 1/2" ×14"/2200 , 7,500psi
Solid Control	4*SWACO MD-3 Shale Shaker 700gpm/per shaker,2*SWACO CD-1400 Degaser,1*SWACO GUMBO 2200gpm.
Drilling Manifold	Rated for 7500 Psi

Power Plant	
Main Power	6*Caterpillar 3516C-HD diesel engines rated at 2,051hp, 1,200 rpm
Emergency Power	1 X CUMMINS KTA38-D(M) diesel engine rated 1,206Hp, 1,800 rpm driving an Zhenjiang China Marine-Xiandai Gen.Co LTD ZFC6 502-44E AC generator

STORAGE CAPACITIES	
Fuel Oil	642m³
Liquid Mud	828 m³
Brine	219m³
Base Oil	219m³
Drill Water	1338m³
Potable Water	561m³
Bentonite/barite	259m³
Cement	259m³

BOP Equipment	
Diverter	Vetco Gray / KFDJ-500psi
BOP annular	Cameron DL 18-3/4" 10k annular BOP
BOP rams	Cameron TL 18-3/4" 15k Double Ram BOP ;
BOP handling	Cameron BOP overhead crane, 2×75 mT

Cranes	
Port&Stbd	2* SEATRAX / type S7232 Kingpost Cranes main 81.5T,aux 13.5T.
Aft	1* SEATRAX / type S7232 Kingpost Cranes main 81.5T,aux 13.5T.
Knuckle-Boom	Cameron/working radius 25m/3.2m, hook load SWL:10T 3.2-16m,SWL: 12T 6-14M

Mooring Equipment	
Mooring Winches	4* MEP/AT40000E 400KN Rated pull capacity.
Anchor Lines	4*914m, 2" Diameter
Anchors	4*CMIC/DELTA HIGH HOLDING POWER,360

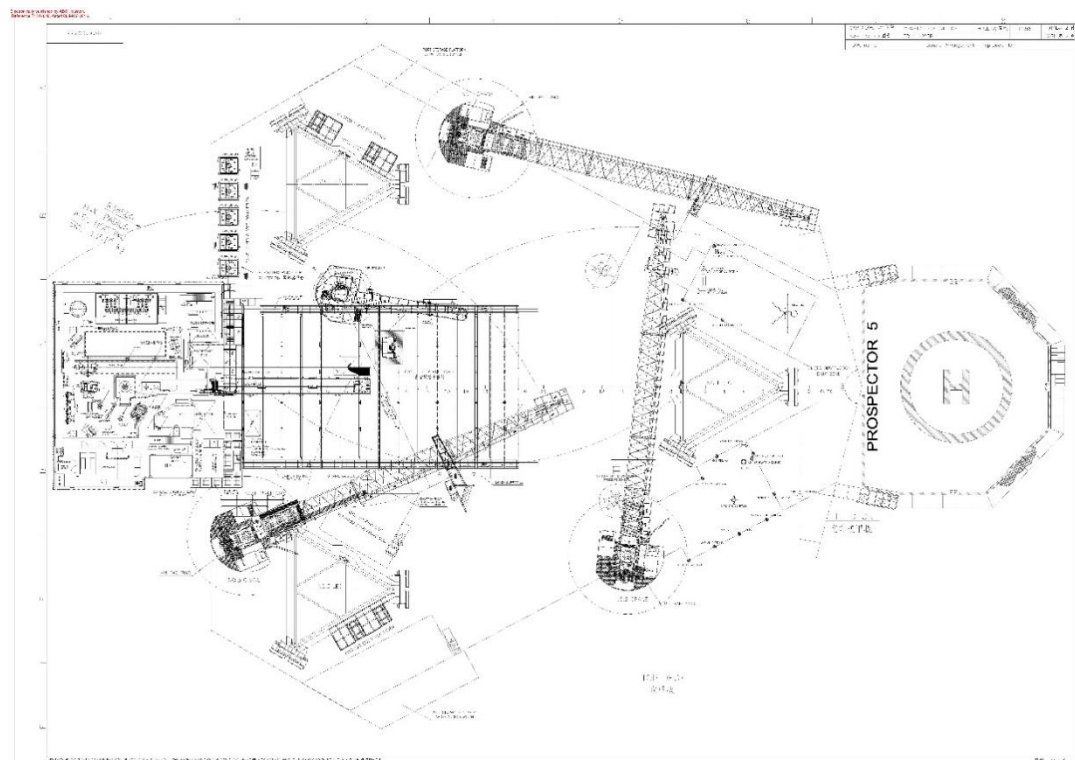
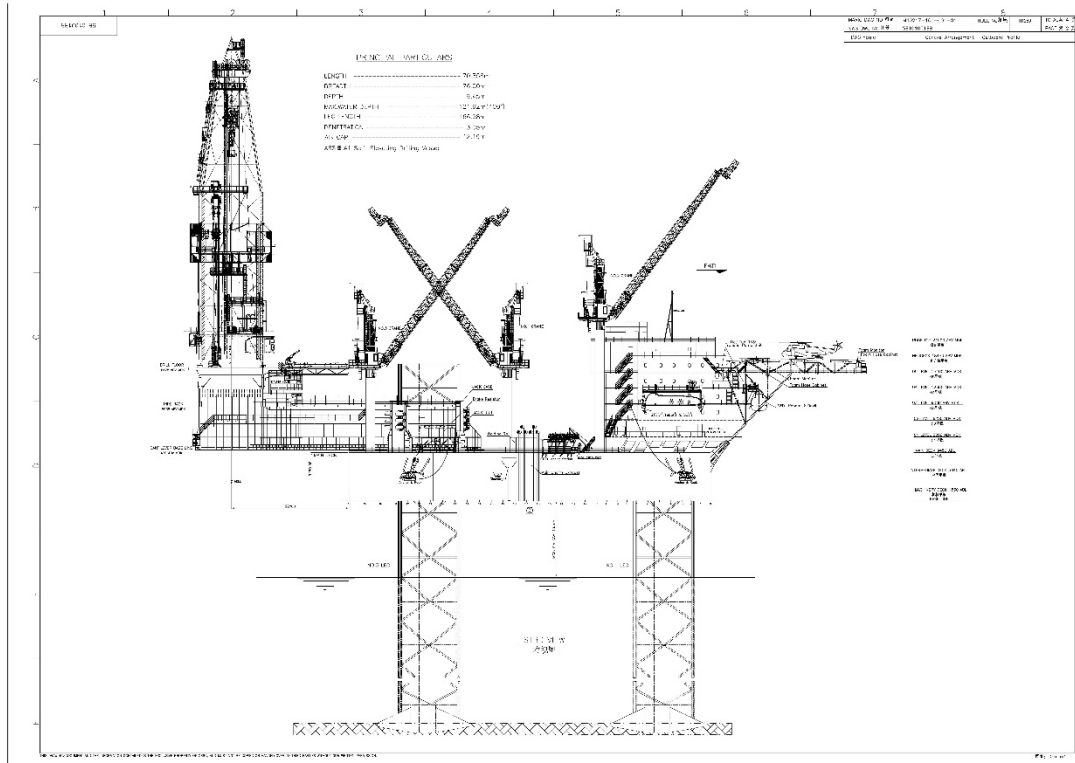
OTHER FEATURES	
Helideck	Rated for SikorskyS-61N and S-92A helicopter
Tension System	TSC CTU & SLIDING PANEL SYSTEM Primary 600 kips ,secondary 300kips

These specifications are intended for general reference purposes only. All equipment shall be operated and maintained at all times, in compliance with COSL DRILLING standard operating manuals,policies and procedures, and within its stated operational limits or continuous rated capacity, in order to assure maximum operational efficiency.



These specifications are intended for general reference purposes only. All equipment shall be operated and maintained at all times, in compliance with COSL DRILLING standard operating manuals,policies and procedures, and within its stated operational limits or continuous rated capacity, in order to assure maximum operational efficiency.

SINOCEAN AUSPICIOUS



These specifications are intended for general reference purposes only. All equipment shall be operated and maintained at all times, in compliance with COSL DRILLING standard operating manuals,policies and procedures, and within its stated operational limits or continuous rated capacity, in order to assure maximum operational efficiency.