

ZHAO SHANG HAI LONG 7

For the additional information please contact:

Marketing Department of COSL Drilling

Telephone: +86 -10 -8452 2511

Email: sh_cosldrillingmarket@cosl.com.cn

Website: www.cosl.com.cn

Office address:

No.201, Haiyou Street, Yanjiao Developing Zone,

Sanhe City, Hebei Province (Post Code: 065201)



General Description

Design/Generation	Gusto MSC CJ50-X120-G
Constructing Shipyard	CHMI(Jiangsu) Co.,Ltd.
Deliver Year/Upgrades	2016
Classification	ABS
Flag	Panama
Overall Dimensions	229.7ft L×223ft W×32.2ft D
Legs	3 x 541.8ft(165.13m); Triangular
Usable leg below hull	460ft(140m)
Spudcan diameter	55ft(16.76m)
Draft at loadline	19.69ft(6m)
Displacement at loadline	22520t(49648kips)
Drilling VL	7000t(15432kips)
Cantilever	
Envelope	10ft(3.05m)-80ft(24.38m)*port24ft(7.31m)-stbd26ft(7.92m)
Operating Water Depth	400ft(121.9m)
Max. Rating Drilling Depth	35,000ft(10668m)
Accommodation	150 beds

Drilling Equipment

Derrick	National Oilwell Varco / SSBN H-beam 170x40x40x18x1500
Simultaneous setback +hook-load capacity	2100kips
Drawworks	National Oilwell Varco / ADS-10Q/1,400hp*4/934t(14 lines)
Top Drive	National Oilwell Varco / TDS-1000A/1,150hp/7,500psi
Rotary Table	NOV/ RST495-3G with Adapter Bushing for 37-1/2" Master Bushing
Tubular Handling	National Oilwell Varco / Hydro Racker NOV / PRS-8i 2-7/8 to 9 3/4 / 22,000lb
Mud Pumps	3*NOV* 14-P-220, 2,200hp/ea, 7,500psi
Solid Control	4* DERRICK / Hyperpool Shale shaker
Drilling Manifold	NOV 5-1/8" 7,500PSI W.P.. Standpipe Manifold NOV 3-1/16" 15,000PSI W.P. Cement Manifold NOV 4-1/16" 15K*/10K PSI W.P. C&K Manifold

Power Plant

Main Power	5*Caterpillar C175-16 diesel engines rated at 1,930KW, 1,200 rpm
Emergency Power	1 X Caterpillar /C32 diesel engine rated 994kw, 1,800 rpm driving an Leory Somer generator

STORAGE CAPACITIES

Fuel Oil	528m3(3,320bbls)
Liquid Mud	1020m3(6,415bbls)
Brine	496m3 (3,119bbls)
Base Oil	305m3 (1,918bbls)
Drill water	2452m3 (15,420bbls)
Potable Water	432m3 (2,717bbls)
Bentonite/barite	1403m3 (8,825ft3)
Cement	1403m3 (8,825ft3)
Sack Storage	5,000 sacks

BOP Equipment

Diverter	GE OIL and GAS / KFDJ - 500 Standard bore
BOP annular	NOV SHAFFER Wedge Cover Spherical Model, 18-3/4"*10,000 Psi,
BOP rams	2* NOV SHAFFER /NXT-M, 18-3/4"*15,000 Psi, Double Ram;
BOP handling	2*XH / HA3-100 , safe working load at 100MT each;

Cranes

Portfwd &Stb fwd	2* FAVELLE FAVCO 8/10K / 50T-29.5FT/10T-152FT
Port aft	1 * FAVELLE FAVCO 7.5/10K / 50T-26.2FT/10T-150FT
Knuckle-Boom	1* NOV Crane 1891/SWL 12T- 15m/ 5.5 t- 25m

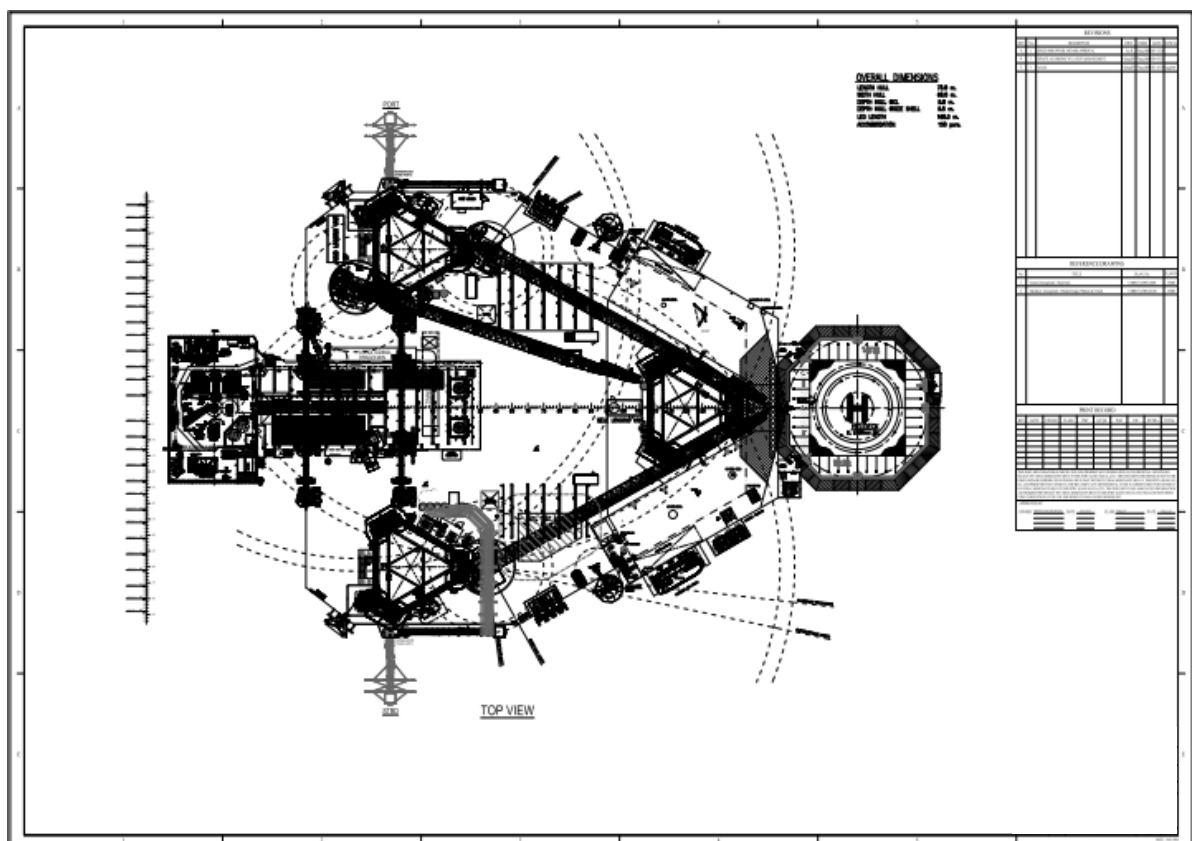
Mooring Equipment

Mooring Winches	2* PH/single drum two speed MOORING WINCH 45T
Anchor Lines	2* JIAN FENG SLING / 6×36WS+IWRC-2788ft
Anchors	2* TAIXING JIANGYANG MARING EQUIPMENT Co., LTD/ HHP JYD ANCHOR,4.5t

OTHER FEATURES

Helideck	Rated for Sikorsky 92&S61N helicopter
Tension System	PH / Hydraulic/4 Hydraulic Cylinders/ 225T

These specifications are intended for general reference purposes only. All equipment shall be operated and maintained at all times, in compliance with COSL DRILLING standard operating manuals,policies and procedures, and within its stated operational limits or continuous rated capacity, in order to assure maximum operational efficiency.

[illegible]

These specifications are intended for general reference purposes only. All equipment shall be operated and maintained at all times, in compliance with COSL DRILLING standard operating manuals, policies and procedures, and within its stated operational limits or continuous rated capacity, in order to assure maximum operational efficiency.