

ZHAO SHANG HAI LONG 9



For the additional information please contact:

Marketing Department of **COSL Drilling**

Telephone: +86 -10 -8452 2511

Email: sh_cosldrillingmarket@cosl.com.cn

Website: www.cosl.com.cn

Office address:

No.201, Haiyou Street, Yanjiao Developing Zone,
Sanhe City, Hebei Province (Post Code: 065201)



General Description

Design/Generation	Gusto MSC CJ50-X120-G
Constructing Shipyard	CHMI(Jiangsu) Co.,Ltd (Jiangsu) Co.,Ltd.
Deliver Year/Upgrades	2020
Classification	ABS&CCS
Flag	China
Overall Dimensions.....	229.7ft L×223ft W×32.2ft D
Legs.....	3 x 541.8ft(165.13m); Triangular
Usable leg below hull	449ft(136.86m)
Spudcan diameter	64.96.7ft(19.8m)
Draft at loadline	20.67ft(6.3m)
Displacement at loadline	22520t(49648kips)
Drilling VL.....	.6950t(15322kips)
Cantilever	
Envelope.....	10ft(3.05m)-80ft(24.38m)*port24ft(7.31m)-stbd26ft(7.92m)
Operating Water Depth	400ft(121.9m)
Max. Rating Drilling Depth	35,000ft(10668m)
Accommodation	150 beds

Drilling Equipment

Derrick	National Oilwell Varco / SSBN H-beam 170x40x40x18x1500
Simultaneous setback +	
hook-load capacity	3311kips(1500t)
Drawworks	National Oilwell Varco / ADS-10Q/1,150hp*4/934t(14 lines)
Top Drive	National Oilwell Varco / TDS-1000A, 1,150hp, 7,500psi
Rotary Table	National Oilwell Varco / VBJ RST 49-1/2" with Adapter Bushing for 37-1/2" Master Bushing
Tubular Handling	National Oilwell Varco / Hydro Racker PRS-8ER 3-1/2 to 9 3/4 / 22,000lb
Mud Pumps	3*NOV* 14-P-220, 2,200hp/ea, 7,500psi
Solid Control	4* DERRICK / Hyperpool shale shaker 1500 x 4 gpm
Drilling Manifold	NOV 5-1/8" 7,500PSI W.P.. Standpipe Manifold NOV 3-1/16" 15,000PSI W.P. Cement Manifold NOV 3-1/16" 15K*/10K PSI W.P. C&K Manifold
Drawworks	National Oilwell Varco / ADS-10Q/1,150hp*4/934t(14 lines)

Power Plant

Main Power	5*Caterpillar C175-16 diesel engines rated at 1,930KW, 1,200 rpm
Emergency Power	1 X Caterpillar /C32 diesel engine rated 994kw, 1,800

STORAGE CAPACITIES

Fuel Oil.....	528m3(3,320bbls)
Liquid Mud.....	1020m3(6,415bbls)
Brine	496m (33,119bbls)
Base Oil.....	305m3 (1,918bbls)
Drill water.....	2452m3 (15,420bbls)
Potable Water.....	432m3 (2,717bbls)
Bentonite/barite.....	250m3 (8,828ft3)
Cement	250m3 (8,828ft3)
Sack Storage.....	5,000 sacks

BOP Equipment

Diverter	Vetco Gray/KFDJ-500 Standard bore
BOP annular	NOV SHAFFER Wedge Cover Spherical Model, 18-3/4"*10,000 Psi,
BOP rams	2* NOV SHAFFER /NXT-M, 18-3/4"*15,000 Psi, Double Ram;
BOP handling	2*Ingersoll Rand / BHS200M/E 14056 Pneumatic Chain Hoists , safe working load at 100MT each;

Cranes

Portfwd &Stb fwd	2* FAVELLE FAVCO 8/10K / 50T-29.5FT/10T-152FT
Port aft	1* FAVELLE FAVCO 7.5/10K / 50T-26.2FT/10T-150FT
Knuckle-Boom	1* NOV Crane 1891/SWL 12T- 15m/ 5.5 t- 25m

Mooring Equipment

Mooring Winches	2* PH 45T ELECTRIC MOORING WINCH
Anchor Lines	2* JIAN FENG SLING / 6×36WS + IWR-44(Ze) 880m
Anchors	2* Jiangsu Yangyuan /HHP JYD ANCHOR,4.5t

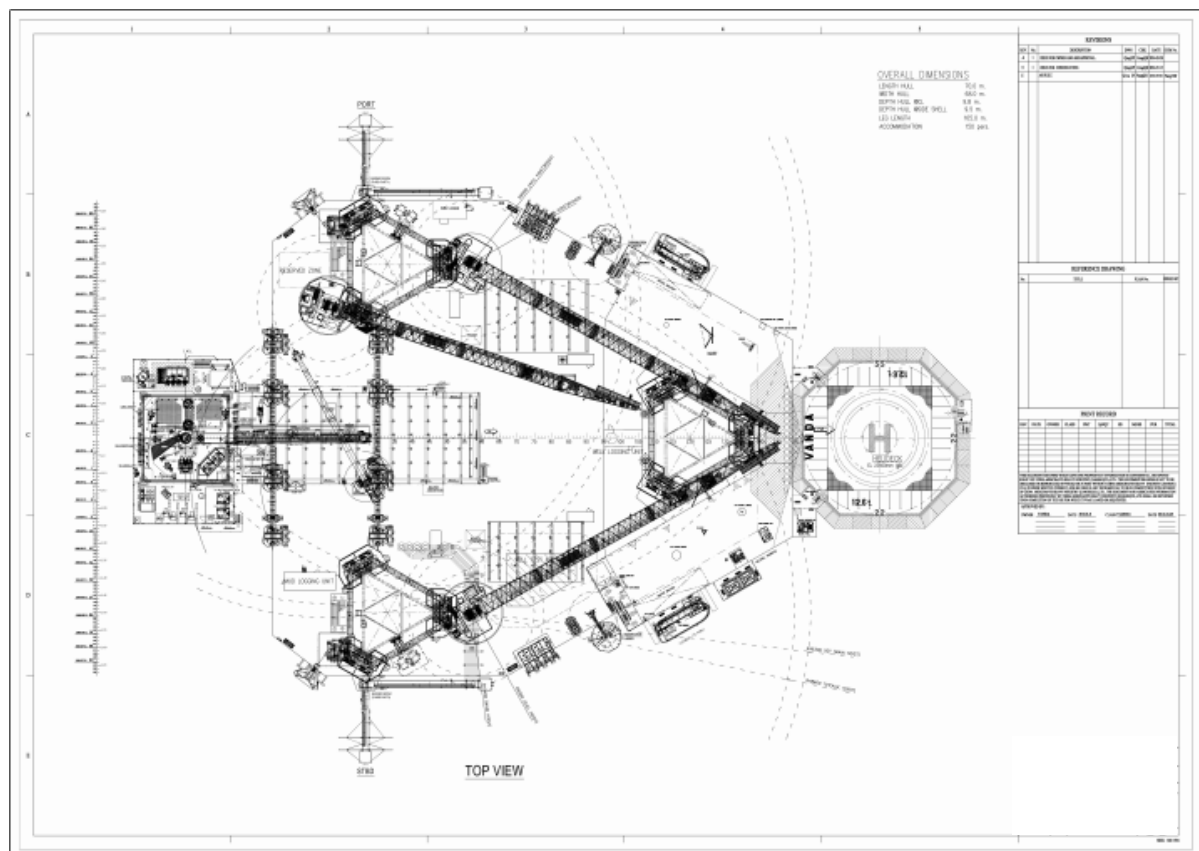
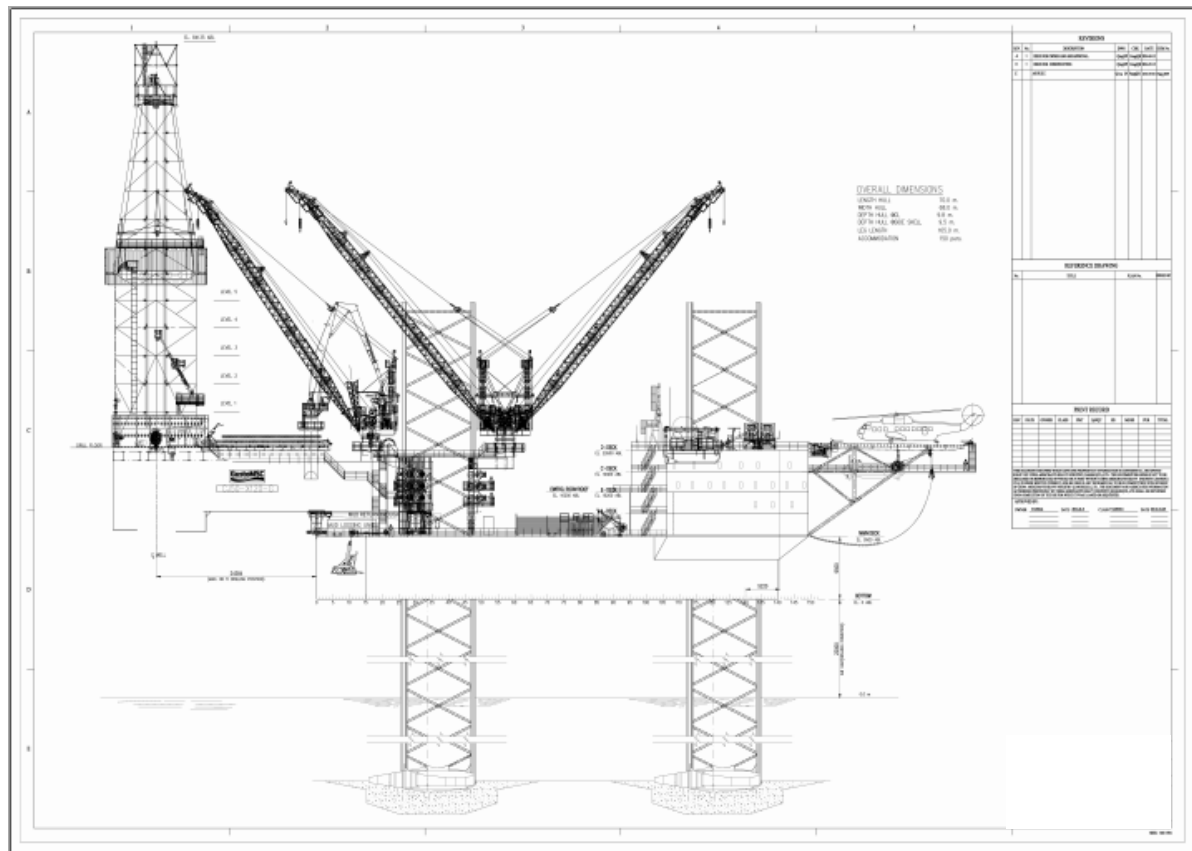
OTHER FEATURES

Helideck	Rated for Sikorsky 92&S61N helicopter
Tension System	PH / Hydraulic/4 Hydraulic Cylinders/ 225T

These specifications are intended for general reference purposes only. All equipment shall be operated and maintained at all times, in compliance with COSL DRILLING standard operating manuals,policies and procedures, and within its stated operational limits or continuous rated capacity, in order to assure maximum operational efficiency.

rpm driving an Leory Somer generator

ZHAO SHANG HAI LONG 9 (ZSHL 9)



These specifications are intended for general reference purposes only. All equipment shall be operated and maintained at all times, in compliance with COSL DRILLING standard operating manuals,policies and procedures, and within its stated operational limits or continuous rated capacity, in order to assure maximum operational efficiency.