

GUO HAI GUO XIN



For the additional information please contact:

MarketingDepartmentof **COSL Drilling**

Telephone: +86 -10 -8452 2511

Email: sh_cosl_drillingmarket@cosl.com.cn

Website: www.cosl.com.cn

Office address:

No.201,Haiyou Street, Yanjiao Developing Zone,

Sanhe City, Hebei Province (Post Code: 065201)



General Description

Design/Generation	Friede & Goldman JU2000E
Constructing Shipyard	Shanghai Waigaoqiao Shipbuilding Co,Ltd
Deliver Year/Upgrades	2021
Classification	ABS&CCS
Flag	CHINA
Overall Dimensions	324 ft L×255ft W×31ft D
Legs	3 x 547ft ;Triangular
Usable leg below hull	475ft
Spudcan diameter	59ft
Transit Draft	21.95ft
Displacement	22995MT
Variable Load	6479mt
Cantilever Envelope	
-Reach aft, from/to	20ft/75ft
-Transverse, port/stbd	15ft/15ft
Operating Water Depth	400ft
Max. Rating Drilling Depth	35,000ft
Accommodation	140 beds

Drilling Equipment

Derrick	Cameron DD 1000-III 45ft×45ft×18ft×19.6ft
Hookload Capacity	998 mt
Drawworks	Cameron UltraHoist 1060-6000 Drawworks
Top Drive	Cameron STD-1000-AC-2M ,1715KW
Rotary Table	Cameron 49-1/2"
Tubular Handling	Cameron Smart racker III-P-AC with catwalk machine
Mud Pumps	3*Aker Solution / Mud pumps TPK 7 1/2" × 14"/2200 , 7,500psi
Solid Control	4*SWACO MD-3 Shale Shaker 700gpm/per shaker,2*SWACO CD-1400 Degaser,1*SWACO GUMBO 2200gpm.
Drilling Manifold	Rated for 7500 Psi

Power Plant

Main Power	6*Caterpillar 3516C-HD diesel engines rated at 1720hp, 1,200 rpm
Emergency Power	1 X CUMMINS KTA38-D(M) diesel engine rated 1,206Hp, 1,800 rpm driving an Zhenjiang China Marine-Xiandai Gen.Co LTD ZFC6 502-44E AC generator

STORAGE CAPACITIES

Fuel Oil.....	4039 bbl
Active Liquid Mud.....	4904bbl
Independent Brine	1377 bbl
Independent Base Oil.....	1377bbl
Drill Water.....	8418 bbl
Potable Water.....	3527 bbl
Bentonite/barite.....	8938ft3
Cement	8938ft3
Sack Storage.....	5,000 @ 50 lbs ea. sacks

BOP Equipment

Diverter	Vetco Gray / KFDJ-500psi
BOP annular	Cameron DL 18-3/4" 10k annular BOP
BOP rams	Cameron TL 18-3/4" 15k Double Ram BOP ;
BOP handling	Cameron BOP overhead crane, 2×75 mT

Cranes

Port&Stbd	2* TSC / type198-200 VE lattice boom King Post main 75T,aux 13.5T.
Aft	1* TSC / type198-200 VE lattice boom King Post main 75T,aux 13.5T.
Knuckle-Boom	Cameron/working radius 25m/3.2m, hook load SWL:10T 3.2-16m,SWL: 12T 6-14M

Mooring Equipment

Mooring Winches	4* ZPMC/AT40000E 445KN Rated pull capacity.
Anchor Lines	4*914m, 2" Diameter
Anchors	4*7500/Delta HHP

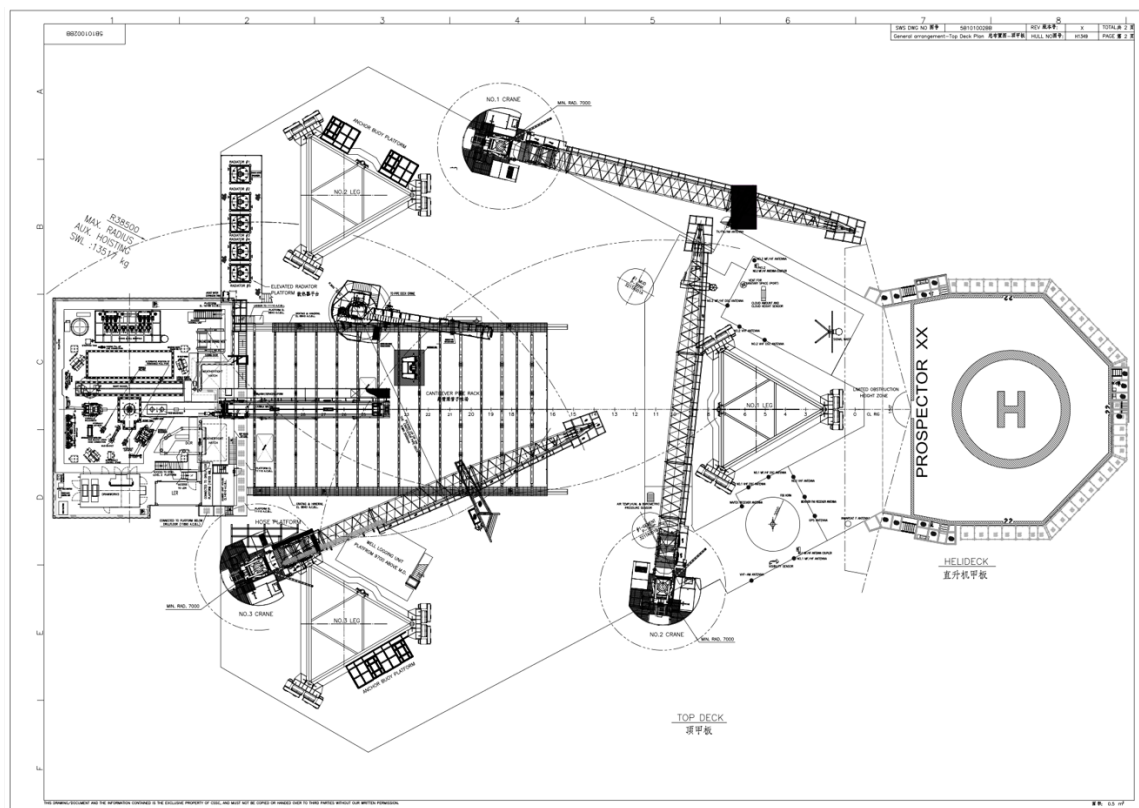
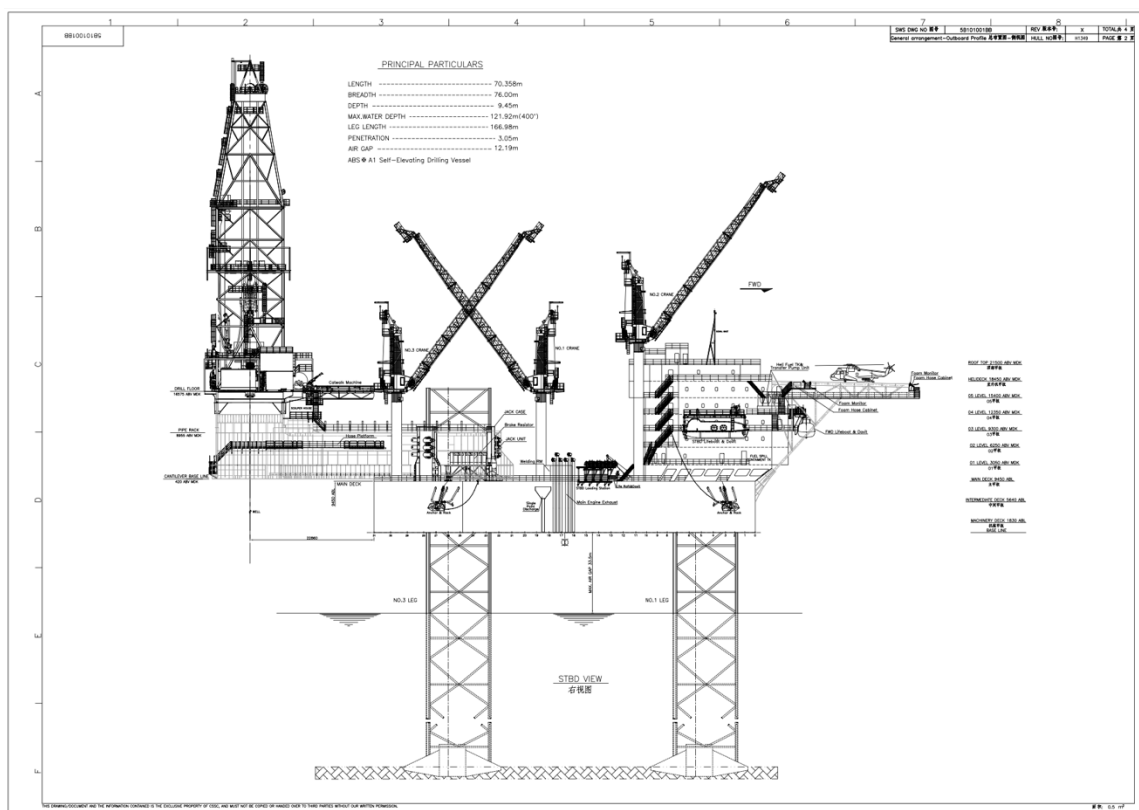
OTHER FEATURES

Helideck	Rated for SikorskyS-61N and S-92A helicopter
Tension System	TSC CTU & SLIDING PANEL SYSTEM Primary 600 kips ,secondary 300kips

These specifications are intended for general reference purposes only. All equipment shall be operated and maintained at all times, in compliance with COSL DRILLING standard operating manuals,policies and procedures, and within its stated operational limits or continuous rated capacity, in order to assure maximum operational efficiency.

These specifications are intended for general reference purposes only. All equipment shall be operated and maintained at all times, in compliance with COSL DRILLING standard operating manuals, policies and procedures, and within its stated operational limits or continuous rated capacity, in order to assure maximum operational efficiency.

GUO HAI GUO XIN



These specifications are intended for general reference purposes only. All equipment shall be operated and maintained at all times, in compliance with COSL DRILLING standard operating manuals, policies and procedures, and within its stated operational limits or continuous rated capacity, in order to assure maximum operational efficiency.