

COSL PROSPECTOR



For the additional information please contact:

MarketingDepartmentof **COSL Drilling**

Telephone: +86 -10 -8452 2511

Email: sh_cosl drillingmarket@cosl.com.cn

Website: www.cosl.com.cn

Office address:

No.201,Haiyou Street, Yanjiao Developing Zone,
Sanhe City, Hebei Province (Post Code: 065201)



General Description

Design/Generation	GG 5000
Constructing Shipyard	Yantai Raffles, China
Year	of
Construction	2015
Classification	DNV.GL
Flag	Singapore
Overall Dimensions	104.5m L*70.5m W
Main deck elevation above baseline	37.55m
Associated	air
gap	12.05m
Draft at load line (deepest)	17.5m
Displacement at load line.....	40849mt
Drilling draft/related displacement	17.5m/40849mt
Max. Substructure/Rotary Load	986mt/1135mt
Setback capacity.....	306mt
Fuel consumption (drilling).....	approx.35mt /day
Operating Water Depth	150m(min)/1500m(max designed)
Max. Rating Drilling Depth	7500m
Accommodation	130

Drilling Equipment

Derrick	NOV SSBN 650-35 x 35 x 160
Hookload Capacity	680mt
Drawworks	NOV AHD 750-5750/ GEB 22A3 (AC)
Top Drive	NOV HPS-03-750 2 AC KT Rated capacity : 680st/ working pressure :7500 psi
Rotary Table	NOV D-605 Rotary Table / Maximum opening : 60-1/2" Rated capacity:1135mt
Active Heave	Integrated in theAHD-750-5750 Drawworks
Compensator	Max. compensating load capacity: 590mt Compensating stroke: Depend on the length of drilling line
Mud Pumps	3*NOV* Hex 240 Maximum working pressure : 517bar
Solid Control	5*NOV Brandt
Standpipe manifold	System working pressure : 7500psi
Choke manifold	Rated for 15,000 Psi

Power Plant

Main Power	6* Rolls Royce Bergen Engine B32:40V12A/5765KW/ 720 rpm
Emergency Power	No separate unit. All six main generators are classified as emergency generators.

STORAGE CAPACITIES

Fuel Oil.....	3400 m3
Mud Active Processing Tanks	750 m3
Brine	1659 m3
Base Oil.....	1050 m3
Drill water.....	1276 m3
Potable Water.....	800 m3
Bentonite/barite.....	410 m3
Cement	410 m3
Sack Storage.....	250 m3

BOP Equipment

Diverter	21 ¼ Shaffer Diverter / 500psi
BOP annular (LMRP)	Shaffer SFX Square shoulder /18 ¾" / Working pressure : 10,000 psi
BOP rams	National Oilwell Varco /18-3/4"*15k Psi, 5 *Ram;
Riser tensioner	8*NOV/200 KIPS Dual Riser Tensioner Capacity each tensioner :200kips Maximum stroke :3810mm
Moon pool	24.2m x 7m x8.7m

Cranes

Port and Stbd	2* Approved by DNV/NMD, NORSOK/Liebherr/ BOS 4200-80 Litronic/Load/radius/speed (minimum radius) :80 mt/ 9.8m
Aft	Approved by DNV/NMD,NORSOK/ NOV/ C2401PCE Load/radius/speed (maximum radius) : Pipe handling 20": 3.5 mt /26.6m, 28m/s Pipe handling 30": 7mt /26.6m, 28m/s Riser handling: 12.2 mt/17.7m, 28m/s
BOP handling system	NOV/BOPC-T-2*60-6/ Rated capacity:340mt

Mooring Equipment

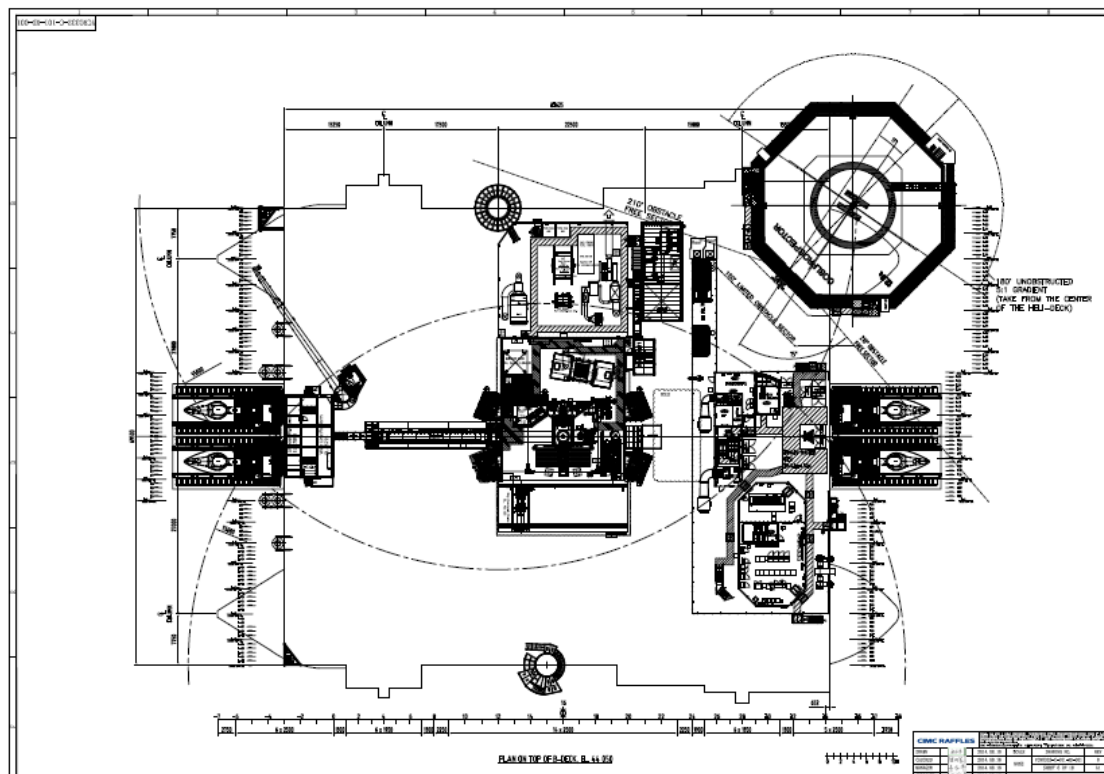
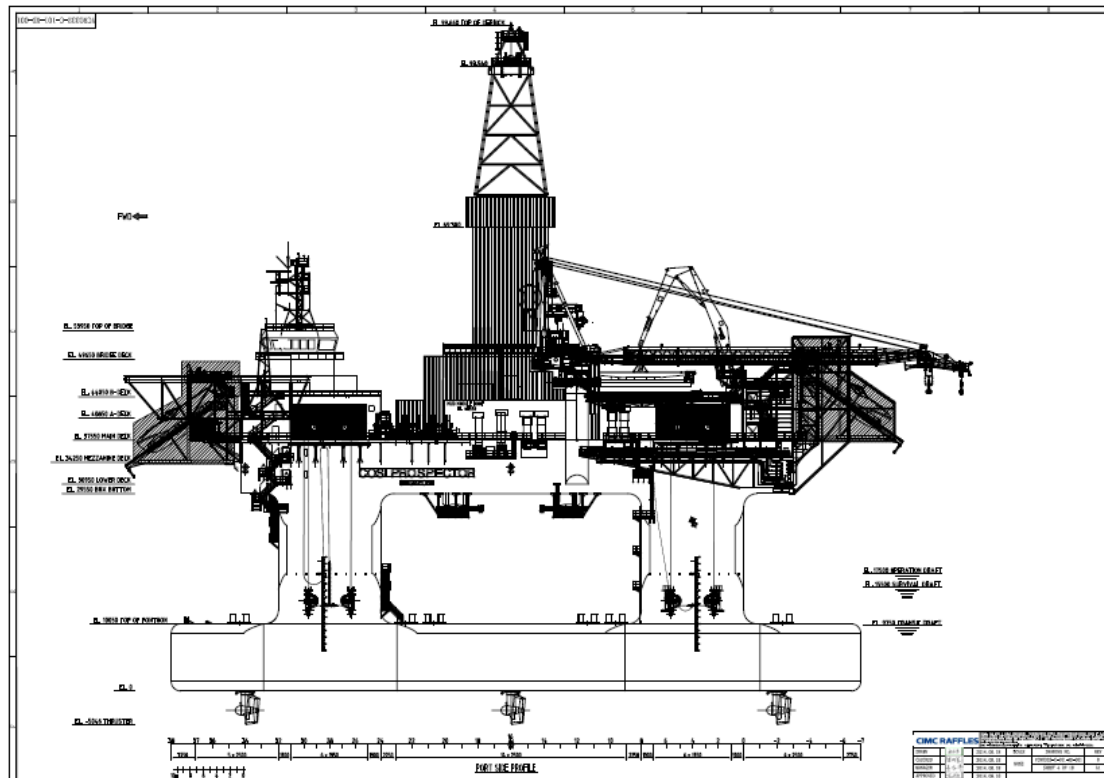
Mooring Winches	8* NOV-BLM/ Total HP per winch :898kw Rated pull : 4245KN
Anchor Lines	Redaelli Tecna SPA / Right Regular Lay – Drawn Galvanized – Independent Useful length (nominal) :750m
Thrusters	6* Azimuthing/ Rolls Royce Ulstein Aquamaster UCC 355/ Total KW per thruster : 3800
Dynamic Positioning	Kongsberg K-POS DPM-32/ Full DP/ 2 x Kongsberg Hi-pap 501, 2 x Kongsberg LTW Mark 15B, 2 x DPS232(DGPS)+ 1 x DPS132(DGPS)

OTHER FEATURES

Helideck	Sikorsky S-92 / Super - Puma
Station Keeping	DP3, POSMORATA

These specifications are intended for general reference purposes only. All equipment shall be operated and maintained at all times, in compliance with COSL DRILLING standard operating manuals,policies and procedures, and within its stated operational limits or continuous rated capacity, in order to assure maximum operational efficiency.

COSL PROSPECTOR



These specifications are intended for general reference purposes only. All equipment shall be operated and maintained at all times, in compliance with COSL DRILLING standard operating manuals,policies and procedures, and within its stated operational limits or continuous rated capacity, in order to assure maximum operational efficiency.