
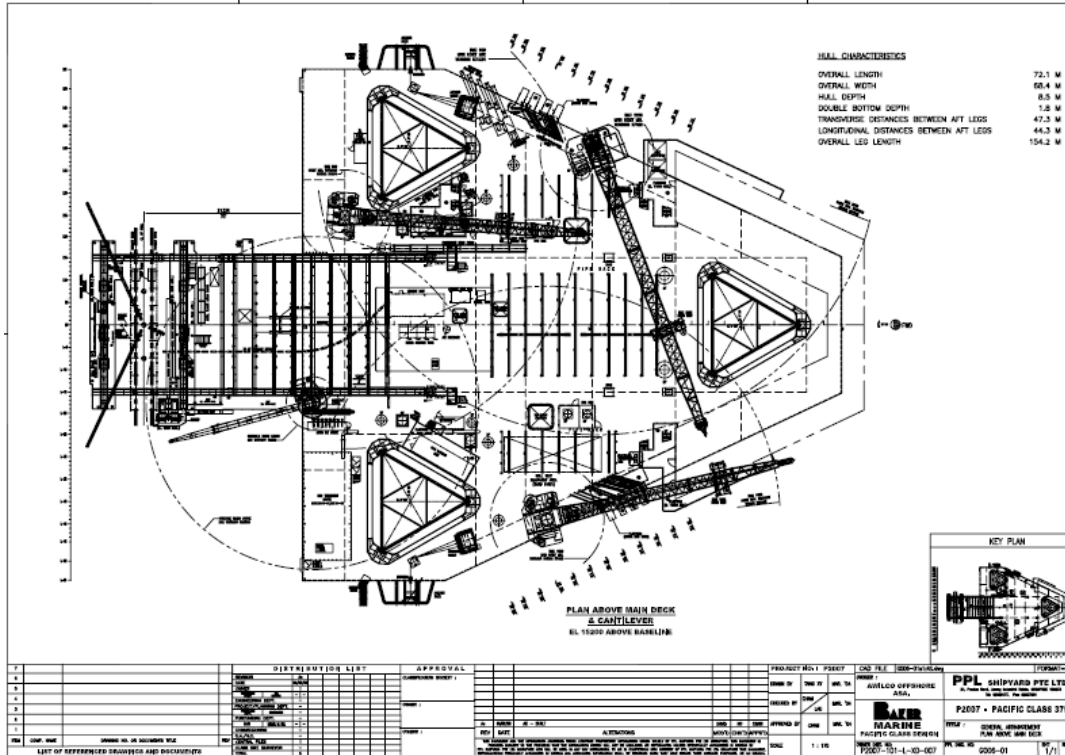
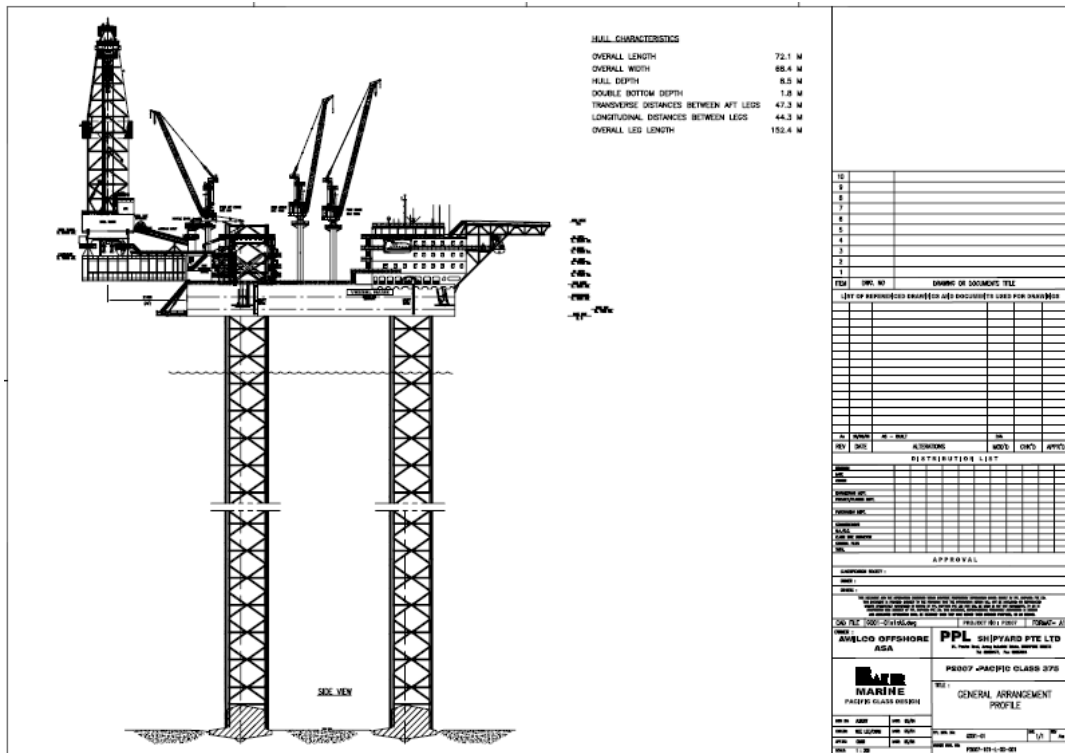


COSL SEEKER

	For Additional Information Please Contact: COSL DRILLING Marketing Department P. O. Box 232, Beijing 101149, China, P.R.C Phone: +86 010 84522511 Fax: +86 010 84522867 sh_cosldrillingmarket@cosl.com.cn www.cosl.com.cn
General Description	
Design/Generation	Baker Marine Pacific Class 375
Constructing Shipyard	PPL Shipyard Pte Ltd, Singapore
Year Enter Service/Significant Upgrades	2008
Classification	ABS
Flag	Bahamas
Displacement	19,777tons
Variable Deck	3,375tons
Operating Water Depth	375ft
Maximum Drilling Depth	30,000ft
Accommodation	115
Drilling Equipment	
Top Drive	National Oilwell Varco / HPS-750-E-AC-SG , 1150HP, 7500psi
Draw works	National Oilwell Varco / D3000UE AC, 3 x1150HP
Derrick	National Oilwell Varco / Bolted H-beam
Cantilever	70ftx 15ft
Mud Pumps	NOV 14-P-220 x 3, 2 x1230HPeach, 7500psi
Storage Capacities	
Fuel Oil	3,654bbbls
Liquid Mud	4,150bbbls
Base Oil	1274bbbls
Brine	1422bbbls
Drill Water	21,920bbbls
Portable Water	3,554bbbls
BOP & Subsea Equipment	
BOP Rams	Shaffer / SLXDBL x 18¾ x 15,000psiWP Dual Rams x2
BOP Annular	Shaffer / Wedge cover spherical model x 18¾ x 10,000 psi
Diverter	Vetco Gray / KFDJ-500 Standard bore
Other Information	
Cranes	55.1 ton x 1; 45 ton x 1; 25 ton x 1; 9.9 ton x 1
Heli-deck	Sikorski S61 N Helicopter
Containment System	zero discharge

COSL SEEKER



These specifications are intended for general reference purposes only. All equipment shall be operated and maintained at all times, in compliance with COSL DRILLING standard operating manuals, policies and procedures, and within its stated operational limits or continuous rated capacity, in order to assure maximum operational efficiency.