
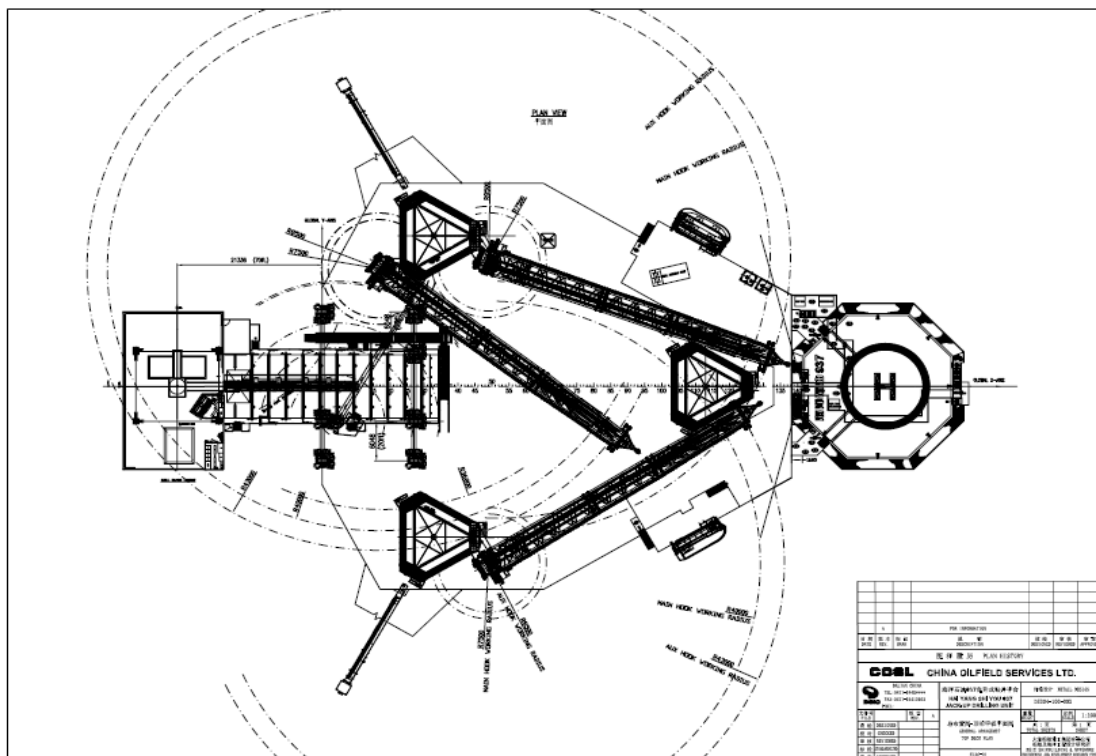
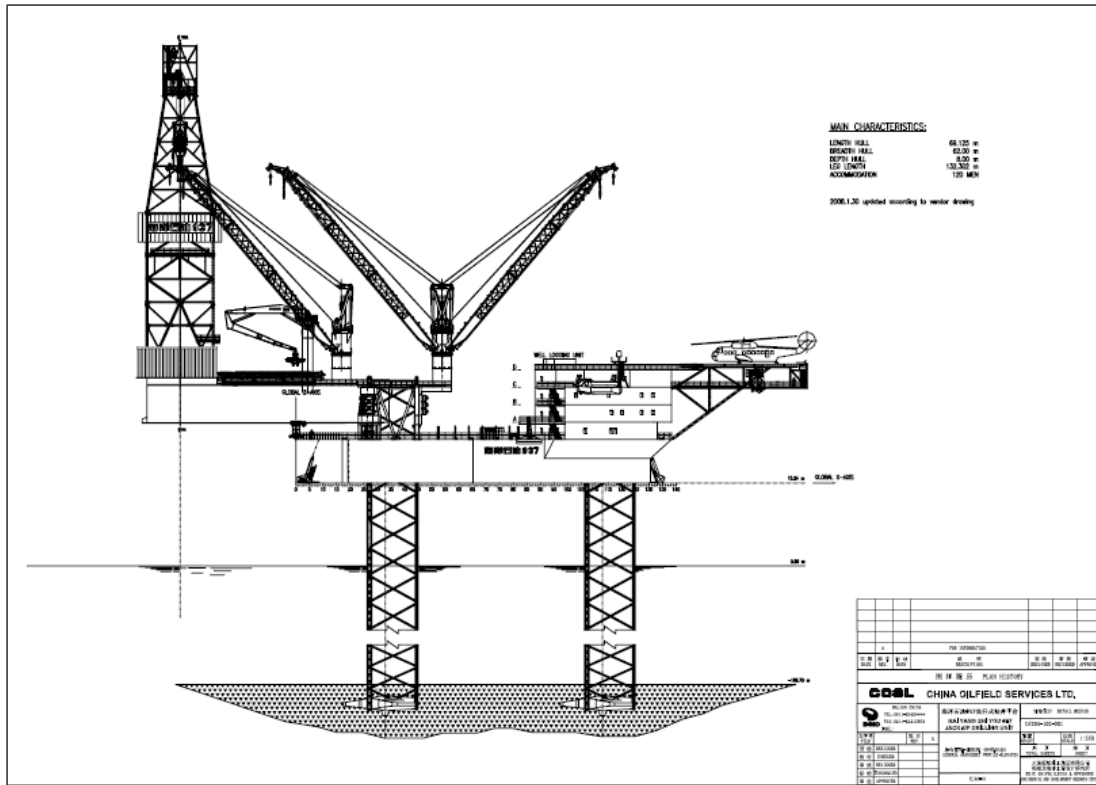


**HAIYANGSHIYOU 936 ("HYSY936")**

	For Additional Information Please Contact: COSL DRILLING Marketing Department P. O. Box 232, Beijing 101149, China, P.R.C Phone: +86 010 84522511 Fax: +86 010 84522867 <a href="mailto:sh_cosldrillingmarket@cosl.com.cn">sh_cosldrillingmarket@cosl.com.cn</a> <a href="http://www.cosl.com.cn">www.cosl.com.cn</a>
<b>General Description</b>	
Design/Generation	Marine Structure Consultants/CJ46-X100-D
Constructing Shipyard	ChinaMerchantsHeavyIndustry(shenzhen)Co.,Ltd
Year Enter Service/Significant Upgrades	2009
Classification	ABS&CCS
Flag	CHINA
Displacement	15,675tons
Variable Deck	3,500tons
Operating Water Depth	300ft
Maximum Drilling Depth	30,000ft
Accommodation	120
<b>Drilling Equipment</b>	
Top Drive	NOV HPS-04 750-AC-KT-RD, 1,150HP, 7,500psi
Draw works	NOV D3000AC with 3x1,350HPAC
Derrick	NOV/NOV170'x35'x40'x18' TOP 1500000 Hook
Cantilever	70ftx 20ft
Mud Pumps	NOV 14-P-220 x 3, 2 x 1,230HPeach, 7,500psi
<b>Storage Capacities</b>	
Fuel Oil	3,868bbbls
Liquid Mud	4,553bbbls
Base Oil	1,264bbbls
Brine	1,264bbbls
Drill Water	22,379bbbls
Portable Water	3,698bbbls
<b>BOP &amp; Subsea Equipment</b>	
BOP Rams	2 x CAMERON x 18-3/4 x 15,000psiWP Dual Ram BOPs
BOP Annular	Cameron x 18-3/4" x 10,000psiWP Annular
Diverter	VETCO/KFDJ
<b>Other Information</b>	
Cranes	50ton x 3
Heli-deck	Sikorski S61 N Helicopter
Containment System	zero discharge

**HAIYANGSHIYOU 936 ("HYSY936")**



These specifications are intended for general reference purposes only. All equipment shall be operated and maintained at all times, in compliance with COSL DRILLING standard operating manuals, policies and procedures, and within its stated operational limits or continuous rated capacity, in order to assure maximum operational efficiency.