
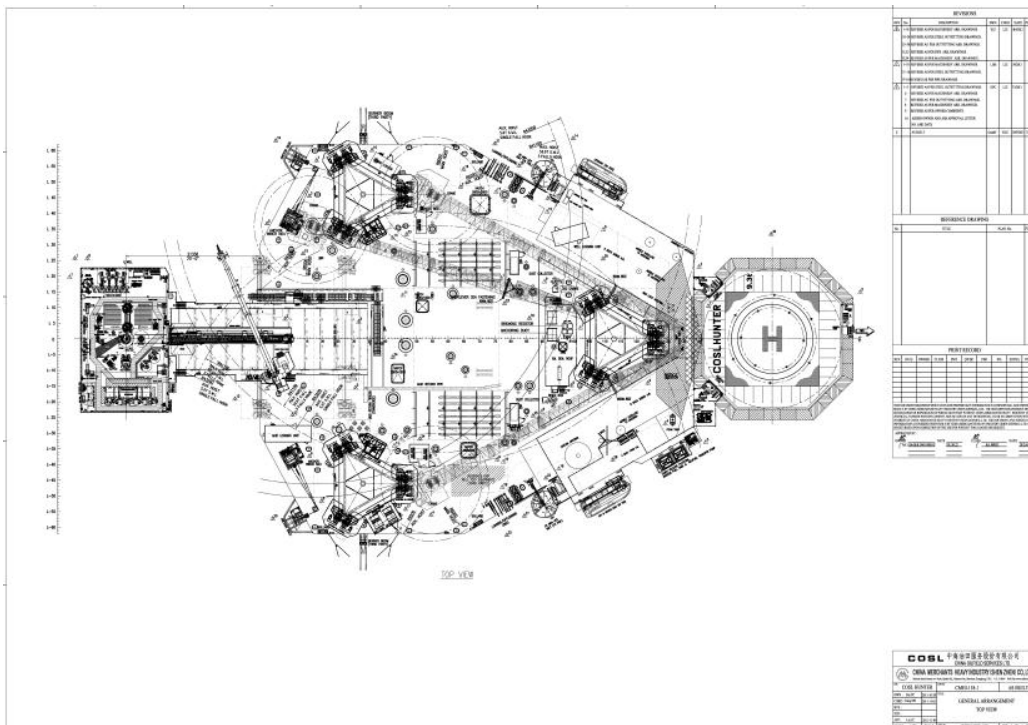
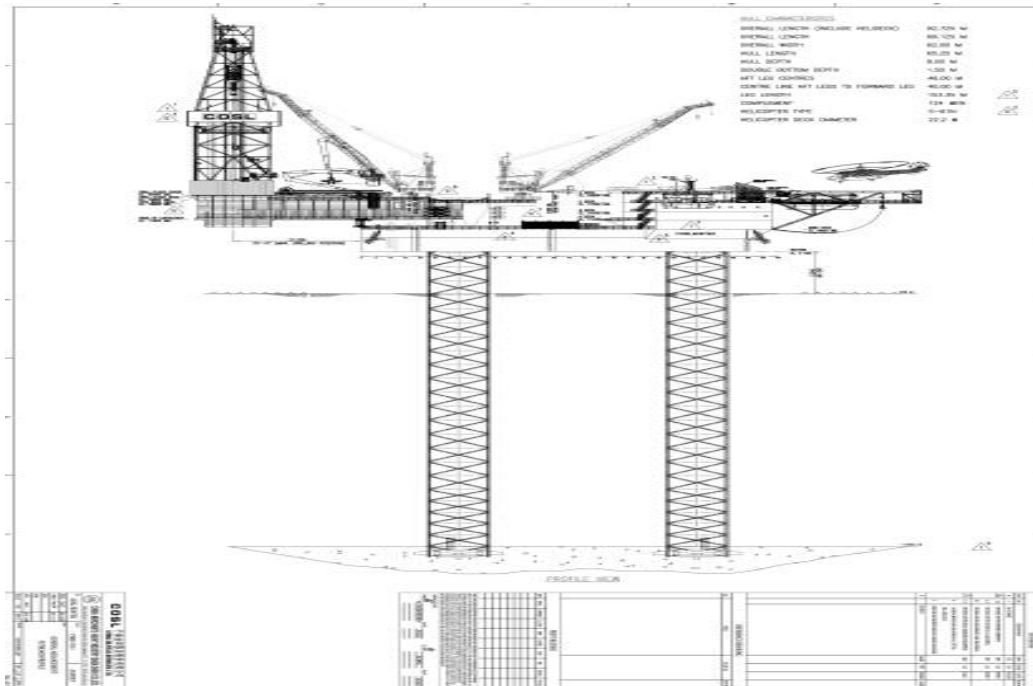


COSL HUNTER

	For Additional Information Please Contact: COSL DRILLING Marketing Department P. O. Box 232, Beijing 101149, China, P.R.C Phone: +86 010 84522511 Fax: +86 010 84522867 sh_cosldrillingmarket@cosl.com.cn www.cosl.com.cn
General Description	
Design/Generation	GUSTO MSC / CJ46-X100-D
Constructing Shipyard	China Merchants Heavy Industry (Shenzhen) Co. Ltd.
Year Enter Service/Significant Upgrades	2013
Classification	ABS
Flag	Singapore
Displacement	15,676tons
Variable Deck	3,489tons
Operating Water Depth	375ft
Maximum Drilling Depth	30,000ft
Accommodation	124
Drilling Equipment	
Top Drive	NOV / TDS-8SA,1150HP, 7500psi
Draw works	NOV / ADS-10T,3 x1229HP
Derrick	National Oilwell Varco / Bolted H-beam
Cantilever	70ftx 20ft
Mud Pumps	NOV 14-P-220 x 3, 2 x1229HP,7500psi
Storage Capacities	
Fuel Oil	3,620bbbls
Liquid Mud	4,650bbbls
Base Oil	1,225bbbls
Brine	1,225bbbls
Drill Water	12,500bbbls
Portable Water	3,750bbbls
BOP & Subsea Equipment	
BOP Rams	Shaffer / NXT - M x18¾ x 15,000psiWP, Dual Rams x2
BOP Annular	Shaffer / Wedge cover spherical model x 18¾ x 10,000 psi
Diverter	Vetco Gray / KFDJ-500 Standard bore
Other Information	
Cranes	50 ton x 3;
Heli-deck	Sikorski S61 N Helicopter
Containment System	zero discharge

COSL HUNTER



These specifications are intended for general reference purposes only. All equipment shall be operated and maintained at all times, in compliance with COSL DRILLING standard operating manuals, policies and procedures, and within its stated operational limits or continuous rated capacity, in order to assure maximum operational efficiency.