

FEN JIN HAO



For the additional information please contact:

MarketingDepartmentof **COSL Drilling**

Telephone: +86 -10 -8452 2511

Email: sh_cosldrillingmarket@cosl.com.cn

Website: www.cosl.com.cn

Office address:

No.201,Haiyou Street, Yanjiao Developing Zone,
Sanhe City, Hebei Province (Post Code: 065201)



General Description	
Design/Generation	F&G EXD
Constructing Shipyard	Shanghai Waigaoqiao Shipyard
Year	of
Construction	2009
Classification	ABS&CCS
Flag	China
Overall Dimensions	114.07m L*78.68m W
Main deck elevation above baseline	38.6m
Associated air gap	11m
Draft at load line (deepest)	19m
Displacement at load line.....	51624.3mt
Drilling draft/related displacement	19m/51624.3mt
Simultaneous setback + hookload capacity :	907 mt+907mt
Setback capacity.....	908mt
Fuel consumption (drilling).....	approx.45mt /day
Operating Water Depth	3050m(max designed)
Max. Rating Drilling Depth	10000m
Accommodation	180

Drilling Equipment	
Derrick	AKMH Dyn/amic Bottle Neck, Galvanized
Hookload Capacity	907mt
Drawworks	Wirth / Gear Driven Three Speed GH 4500 EG-AC Type CL
Top Drive	MH DDM 1000 AC-2M-"x GE1150hp Rated capacity : 907mt/ working pressure :7500 psi
Rotary Table	Wirth RTSS 60 1/2" H / Maximum opening : 1537mm/Rated capacity:907mt
Active Heave Compensator	AKMH/Active Heave Compensator-YD25 Max. compensating load capacity: 25.6mt Compensating stroke: 7620mm
Mud Pumps	4* Wirth TPK 7 1/2 x 14" / 2200 CL Maximum working pressure : 7500PSI
Solid Control	6*N Swaco BEM 650
Standpipe manifold	System working pressure : 7500psi
Choke manifold	Rated for 15,000 Psi

Power Plant	
Main Power	8* Wartsila / 12V32 /5765KW/ 720 rpm
Emergency Power	Caterpillar 3516B/ 2606KVA(1825KW)/ 1800rpm

STORAGE CAPACITIES	
Fuel Oil.....	4603.2 m3
Mud Active Processing Tanks	1039 m3
Brine	723 m3
Base Oil.....	767.2 m3
Drill water.....	3123.3 m3
Potable Water.....	1391.3 m3
Bentonite/barite.....	553 m3
Cement	350 m3
Sack Storage.....	7500 sacks

BOP Equipment	
Diverter	Vetco KFDS / 500psi/Max OD size :60.25
BOP annular	NOV/Wedge Cover "Standard" /18 3/4" / Working pressure : 10,000 psi
BOP rams	National Oilwell Varco /18-3/4"*15k Psi, 6 *Ram;
Riser tensioner	6* AKMH AS /Capacity each tensioner :3600kips Maximum stroke :50ft
Moon pool	42.7m x 8.6m x17.08m

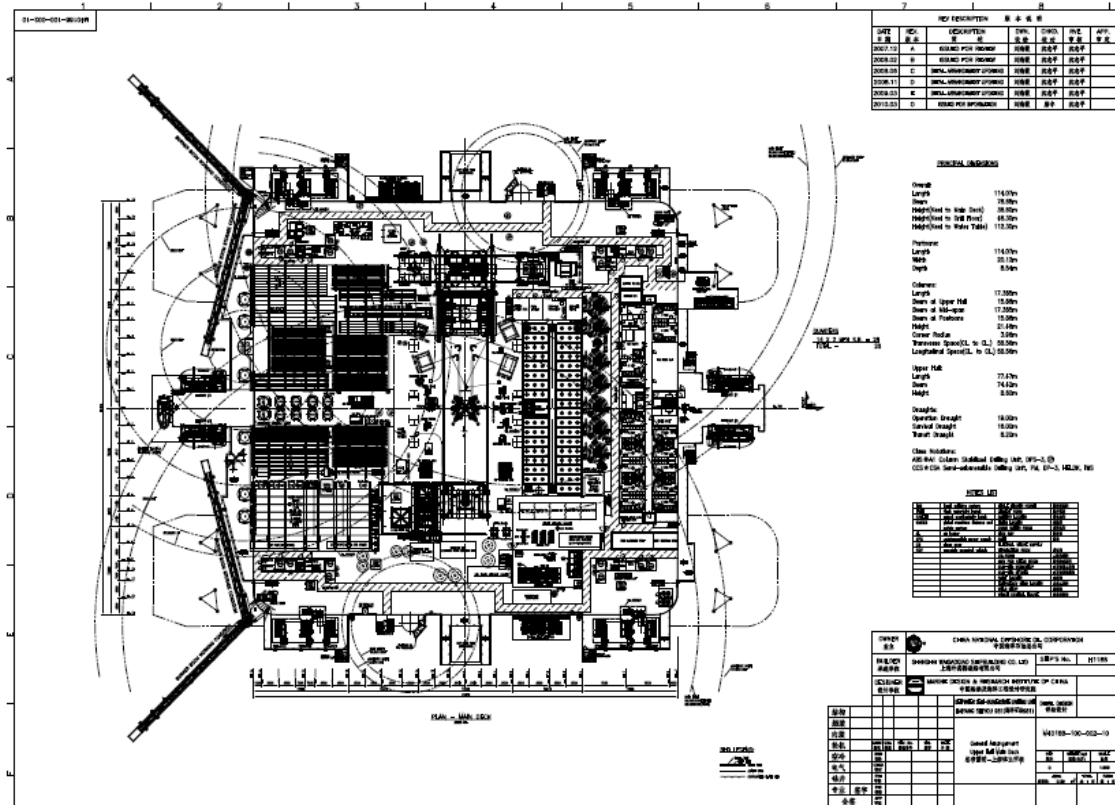
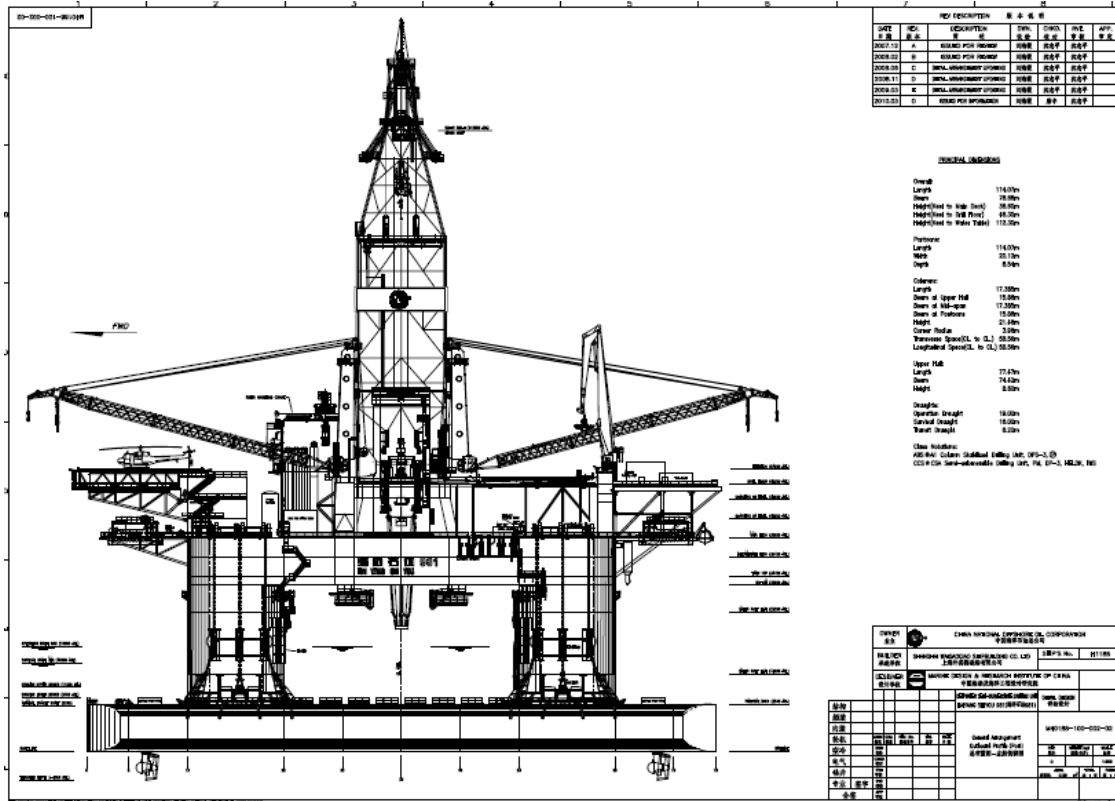
Cranes	
Port and Stbd	2* ABS/CCS class notation CRANE,API 2C /Liebherr/ MTC 6000-100 D Litronic /Load/radius/speed (minimum radius) : 100mt/ 10.8m/ 0.32m/s
Aft	ABS/CCS class notation CRANE,API 2C / MacGREGOR / HMC 2806 PDPH 50-37,85, PIPE HANDLER
BOP Handling System	AKMH / SWL 2x275 mT main / SWL 30 mT auxiliary / Rated capacity:550mt
X-Mas tree Handling System	AKMH / SWL 2x75 mT main /Lifting Height:15m / Rated capacity:150mt

Mooring Equipment	
Mooring Winches	4 *triple/ AKER Pusnes/Electric/Total HP per winch :560kw/Rated pull : 275mt
Anchor Lines	12 installed/0 spare / JIANGSU ASIAN STAR ANCHOR CHAIN CO.,LTD/Useful length (nominal) :1750m
Thrusters	8* Azimuthing/ Total HP per thruster : 4600kw
Dynamic Positioning	Kongsberg K-POS DPM-32/ Full DP and Mooring assist/ 2xAcoustic and 3xDGPS

OTHER FEATURES	
Helideck	SIKORSKY S61/S92
Station Keeping	DP3 system

These specifications are intended for general reference purposes only. All equipment shall be operated and maintained at all times, in compliance with COSL DRILLING standard operating manuals,policies and procedures, and within its stated operational limits or continuous rated capacity, in order to assure maximum operational efficiency.

FEN JIN HAO



These specifications are intended for general reference purposes only. All equipment shall be operated and maintained at all times, in compliance with COSL DRILLING standard operating manuals, policies and procedures, and within its stated operational limits or continuous rated capacity, in order to assure maximum operational efficiency.