

NAN HAI ER HAO

For the additional information please contact:

Marketing Department of COSL Drilling

Telephone: +86 -10 -8452 2511

Email: sh_cosl_drilling_market@cosl.com.cn

Website: www.cosl.com.cn

Office address:

No.201, Haiyou Street, Yanjiao Developing Zone,

Sanhe City, Hebei Province (Post Code: 065201)

General Description

Design/Generation	AKER /H-3
Constructing	
Shipyard	AKER
Year of Construction	1975
Classification	CCS & ABS
Flag	China
Overall Dimensions	108.2m*67.41m
Main deck elevation above baseline	36.6m
Associated air gap	15.3m
Moon pool dimensions	6m*6m
Max. opening through spider deck	N/A
Draft at load line (deepest)	21.34m
Displacement at load line	20615mt
Drilling draft/related displacement	21.3m/20,615mt
Max. Substructure/Rotary Load	N/A
Fuel	consumption
(drilling)	14.5m3/day
Operating Water Depth	200ft(min)/1000ft(max)
Max. Rating Drilling Depth	20000ft
Accommodation	120 beds

Drilling Equipment

Derrick	EMSCO/22BDA
Simultaneous setback + hookload capacity :	830mt
Drawworks	EMSCO C -3 TYPE II /3*2400hp/1-1/2in drilling line GE-752 R DC motor
Top Drive	Varco TDS-8SA /1150 HP(AC motor) /7500psi, 750mt Maximum continuous torque : 62250ft.lb@95rpm
Rotary Table	Continental Emsco/T-4950/Maximum opening:49.5mm
Drilling string motion	Baoji BC225/450/5486-Y Compensating stroke :18ft
compensator	Max. static load :4500KN
Mud Pumps	2* Baoji *2XF-1600 1* TianShi *1XNF-1600 Maximum working pressure : 5,000psi
Solid Control	4x NOV VSM300 Shaker
Standpipe manifold	Rated for 5000 Psi
Choke manifold	Rated for 10,000 Psi

Power Plant

Main Power	3*WARTSILA F312B/2500KW/ 900 rpm
Emergency Power	1*Caterpillar 3412C rated 590kw, 1,800 rpm

STORAGE CAPACITIES

Fuel Oil	2232m3
Active Liquid Mud	257.7m3
Brine	N/A
Base Oil	N/A
Drill water	1281m3
Potable Water	1160 m3
Bentonite/barite	120 m3
Cement	240m3
Sack Storage	3000sacks

BOP Equipment

Diverter	REAGON HUGHES/ KFDS-3 / 500psi
BOP annular	NL SHAFFER/18-3/4" 5000psi wp
BOP rams	CAMERON, 18-3/4"*1,0000 Psi, 4 *Ram;
Riser tensioner	6* NL SHAFFER 80 K / Maximum stroke :12.5ft/ Capacity each tensioner : 80000lbs

Cranes

Port	1* LIEBHERR 50/15 .40 Load/radius/speed (minimum radius):50T/7.7M ; (maximum radius): 50t/35.2m
Stbd	1* LIEBHERR 50/15 .40 Load/radius/speed (minimum radius):50T/7.7M ; (maximum radius): 50t/35.2m
BOP handling system	MARITIME HYDRAULIC Rated capacity:4x27tons

Mooring Equipment

Mooring Winches	8*NORWINCH /2A2-76/ Hydraulic / Total HP per winch :340hp/
Anchor Lines	8*JIANGSU ASIAN STAR ANCHOR CHAIN CO.,LTD/LWT.13.6 Diameter :76.2mm/ Weight per unit length : 134kg/m/ Useful length (nominal) :1220m
Anchors	8ea, Vicinay LWT

OTHER FEATURES

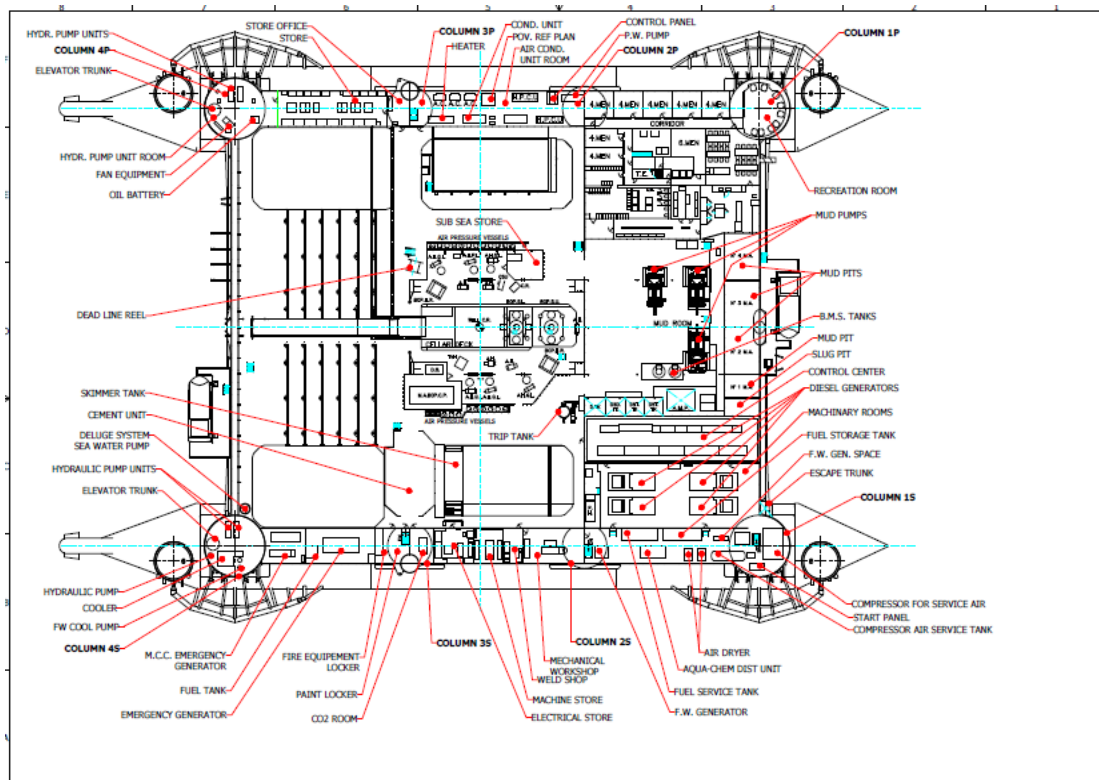
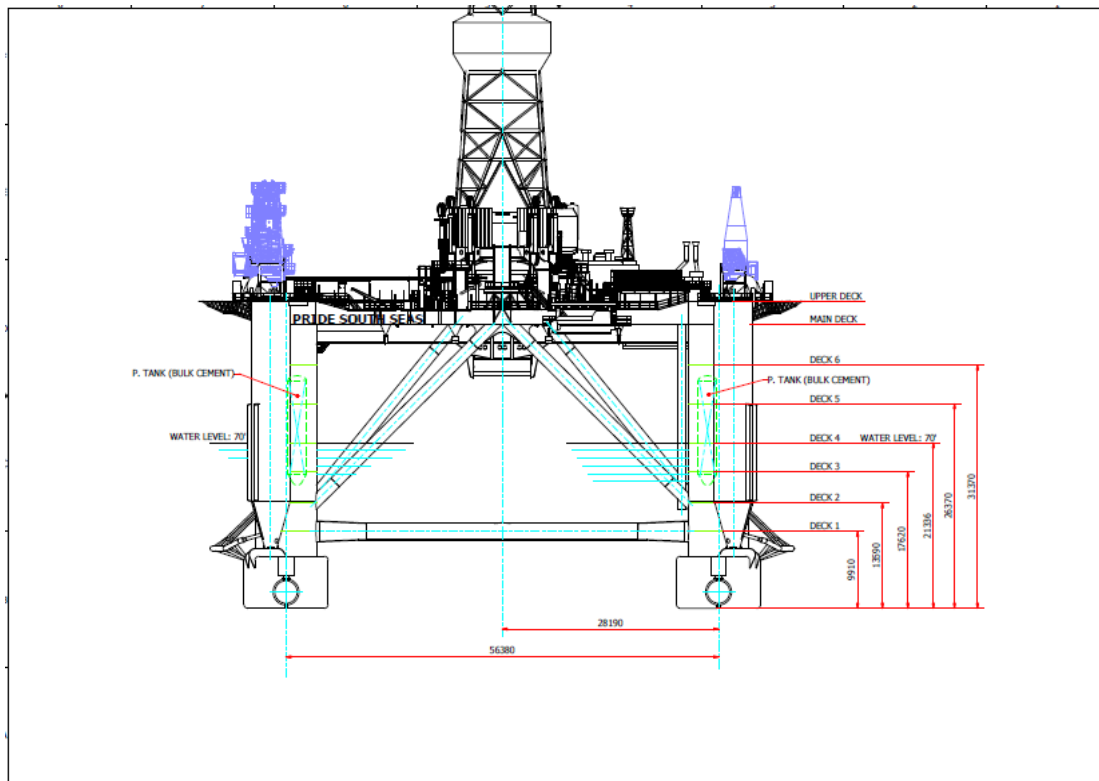
Helideck	SIKORSKY S - 61
Station Keeping	Mooring system

These specifications are intended for general reference purposes only. All equipment shall be operated and maintained at all times, in compliance with COSL DRILLING standard operating manuals, policies and procedures, and within its stated operational limits or continuous rated capacity, in order to assure maximum operational efficiency.



Revision Date: October 22th, 2024

NAN HAI ER HAO (NH2)



These specifications are intended for general reference purposes only. All equipment shall be operated and maintained at all times, in compliance with COSL DRILLING standard operating manuals, policies and procedures, and within its stated operational limits or continuous rated capacity, in order to assure maximum operational efficiency.