

## LISHEN



For the additional information please contact:

Marketing Department of COSL Drilling

Telephone: +86 -10 -8452 2511

Email: sh\_cosl\_drilling\_market@cosl.com.cn

Website: [www.cosl.com.cn](http://www.cosl.com.cn)

Office address:

No.201, Haiyou Street, Yanjiao Developing Zone,  
Sanhe City, Hebei Province (Post Code: 065201)

**General Description**

Design/Generation	Baker Marine Pacific Class 375
Constructing Shipyard	PPL Shipyard Pte Ltd, Singapore
Deliver Year/Upgrades	2008
Classification	ABS&CCS
Flag	China
Overall Dimensions	330.7ft L*245.6ft W x 27.9ft D
Legs	3 x 506ft; Triangular cross section leg structure
Usable leg below hull	435ft
Spudcan diameter	55.5ft
Draft at loadline	19.5ft
Displacement	43,950 kips
Drilling Variable Load	7,500 kips
Cantilever Envelope	70ft* ± 15ft
Operating Water Depth	375ft
Max. Rating Drilling Depth	30,000ft
Accommodation	115 beds

**Drilling Equipment**

Derrick	National Oilwell Varco / Bolted H-beam
Hookload capacity	1500 kips
Drawworks	National Oilwell Varco / D3000 UEAC
Top Drive	National Oilwell Varco / HPS-750-E-AC-SG working pressure :7,500psi, Rated capacity :750st
Rotary Table	National Oilwell Varco / D-4957K with Adapter Bushing for 37-1/2" Master Bushing
Tubular Handling	National Oilwell Varco / X-Y HydraRacker/ Racking Gripper Head:3½ to 9¼ / 22,000lb/ Pick-up Elevator, 2 7/8 to 13 5/8
Mud Pumps	3 * NOV * 14-P-220, 2,200hp/ea, 7,500psi
Solid Control	2* DERRICK DP-626 with Twin SG3X Motors 1*GUANNENG GNZ5596K with Twin 2.2 KW Motors 1*PURUIMU MVTX 15/5000-G with Twin DEMKO 12ATEX Motors
Drilling Manifold	Rated for 7,500 Psi

**Power Plant**

Main Power	5 * Caterpillar 3516B HD DITA diesel engines rated at 2,150hp, 1,200 rpm
Emergency Power	1 X Caterpillar 3508 DITA / 1298hp, 1,800 rpm

**STORAGE CAPACITIES**

Fuel Oil	4,183bbls
Liquid Mud	4,150bbls
Brine	1422bbls
Base Oil	1,274bbls
Drill water	21,923bbls
Potable Water	3,579bbls
Bentonite/barite	5,827ft3
Cement	5,827ft3
Sack Storage	5,000(@50lb each) sacks

**BOP Equipment**

Diverter	Vetco Gray / KFDJ-500 Standard bore / 500psi
BOP annular	CAMERON "DL"18-3/4" *10,000 Psi;
BOP rams	2 * CAMERON / "TL", 18-3/4"*15k Psi, Double Ram;
BOP handling	2 * INGERSOLL RAND HERCU- LINK , safe working load at 100MT each; Vertical travel length 9.1m

**Cranes**

Port	1* API 2C and ABS/ Baker Marine Kingpost Crane
Port forward	BMC-2250-I/ 55.1 st / 25 ft /15.0 st / 127.5 ft
Stbd	1*API 2C and ABS/ Baker Marine Kingpost Crane BMC-1600-I/ 45.0 st / 25 ft/9.5 st / 106.5 ft
Port aft	1 * API 2C and ABS / Baker Marine Kingpost Crane BMC-900E/ 25.0 st / 20 ft /7.5 st / 102.6 ft
Knuckle-Boom	1 * API 2C and ABS CDS/ Knuckle boom pipe handling crane with gripper yoke for 3½" to 20" tubulars

**Mooring Equipment**

Mooring	4 * Baker Marine single drum Dual Speed , electric, 35kw 32 tons stall pull, 63 tons holding .
Winches	
Anchor Lines	4 * RRL galvanized/ 1 ½in/ 3,000ft
Anchors	4 * Flipper Delta ,6t

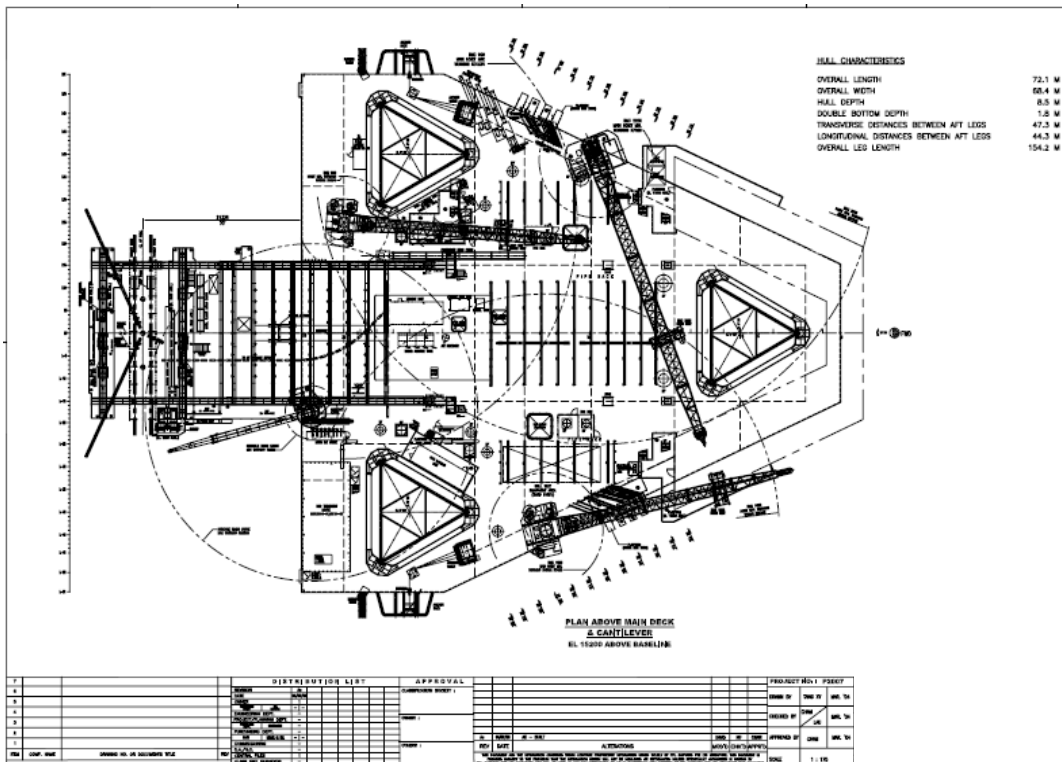
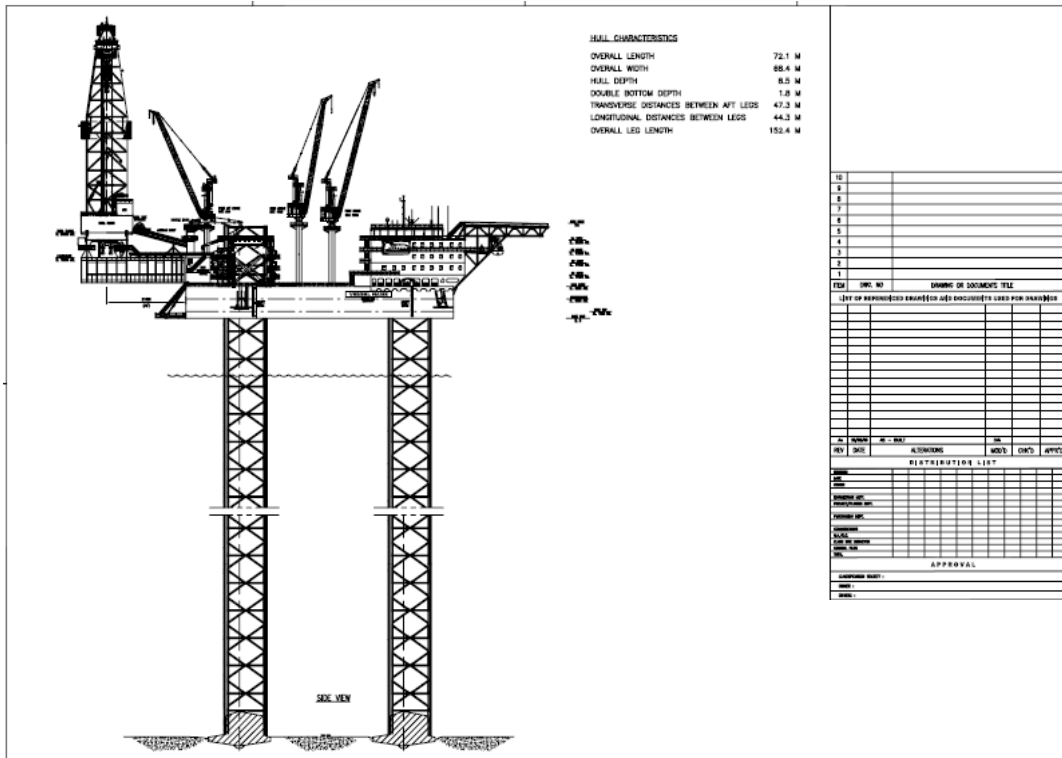
**OTHER FEATURES**

Helideck	Rated for Sikorsky S61N helicopter
Tension System	National Oilwell Varco / Hinged Push-up Ring on Conductor Platform, with 4 Hydraulic / 250ST

These specifications are intended for general reference purposes only. All equipment shall be operated and maintained at all times, in compliance with COSL DRILLING standard operating manuals, policies and procedures, and within its stated operational limits or continuous rated capacity, in order to assure maximum operational efficiency.

These specifications are intended for general reference purposes only. All equipment shall be operated and maintained at all times, in compliance with COSL DRILLING standard operating manuals, policies and procedures, and within its stated operational limits or continuous rated capacity, in order to assure maximum operational efficiency.

# LISHEN



These specifications are intended for general reference purposes only. All equipment shall be operated and maintained at all times, in compliance with COSL DRILLING standard operating manuals,policies and procedures, and within its stated operational limits or continuous rated capacity, in order to assure maximum operational efficiency.