

## COSL HUNTER



For the additional information please contact:

MarketingDepartmentof **COSL Drilling**

Telephone: +86 -10 -8452 2511

Email: sh\_cosldrillingmarket@cosl.com.cn

Website: www.cosl.com.cn

Office address:

No.201,Haiyou Street, Yanjiao Developing Zone,  
Sanhe City, Hebei Province (Post Code: 065201)

**General Description**

Design/Generation .....	Marine Structure Consultants/CJ46-X100-D
Constructing Shipyard .....	China Merchants Heavy Industry (Shenzhen) Co. Ltd.
Deliver Year/Upgrades .....	2013
Classification .....	ABS
Flag .....	Singapore
Overall Dimensions .....	214.1ft L × 203.4ft W × 26.25ft D
Legs.....	503ft. long; Triangular
Usable leg below hull .....	440ft
Spudcan diameter .....	52.5ft
Draft at loadline .....	14.9ft
Displacement at loadline .....	31325kips
Drilling VL.....	7726 kips
Cantilever Envelope .....	70ft ± 20ft
Operating Water Depth .....	375ft
Max. Rating Drilling Depth .....	30,000ft
Accommodation .....	124 beds

**Drilling Equipment**

Derrick	NOV/NOVBOLTED H-BEAM 170'x35'x40', 1500Kips Hook Load
Simultaneous setback +	2400 kips
hook-load capacity	
Drawworks	NOV / ADS-10T , NOV/DM27 3*1,229HP,AC
Top Drive	NOV/TDS-8SA, 1,150HP, 7,500PSI, 680mt
Rotary Table	NOV/RST495-3G
Tubular Handling	NOV / PRS-8i Racker with catwalk machine
Mud Pumps	NOV 14-P-220*3, 2,200HP/ea., 7,500PSI
Solid Control	4* Derrick FLC 504 Shale Shakers
Drilling Manifold	NEWAY 10,000 PSI W.P. Standpipe Manifold NEWAY 10,000 PSI W.P. Cement Manifold Neway 4 1/16"-10K X 4 1/16"-5K Chock and Kill Manifold

**Power Plant**

Main Power	5* Caterpillar/3516C-HD diesel engines rated at 2150HP, 1200 RPM
Emergency Power	1 X Caterpillar/C32 diesel engine rated at 1333hp, 1,800 RPM

**STORAGE CAPACITIES**

Fuel Oil.....	3645bbl
Liquid Mud.....	4,315bbls
Brine .....	1,264bbls
Base Oil.....	1,264bbls
Drill Water.....	22,352bbls
Potable Water.....	3,698bbls
Bentonite/barite.....	7486 ft <sup>3</sup>
Cement .....	7486 ft <sup>3</sup>
Sack Storage.....	5,000 sacks

**BOP Equipment**

Diverter	VETCO/KFDJ-500
BOP annular	CAMERON 13-5/8"*10000PSI WP Annular
BOP rams	Cameron / U, 13-5/8"*10000Psi, Double Ram
BOP handling	2 * JDN/Monorail Air Hoist EH 100, 100mt

**Cranes**

Port&Stbd	3* FAVELLE FAVCO, 135 ft, 50mt/32.8ft, 10mt/134.8 ft
Fwrd	N/A
Knuckle-Boom	1*NOV KMCVCT-1891-9-25@Cantilever

**Mooring Equipment**

Mooring Winches	4* PH Hydraulics & Engineering PTE. LTD/35MT VFD Anchor Winch System
Anchor Lines	RRL galvanized/6×37-IWRC/ Φ1.5"*3000ft
Anchors	4 * HHP

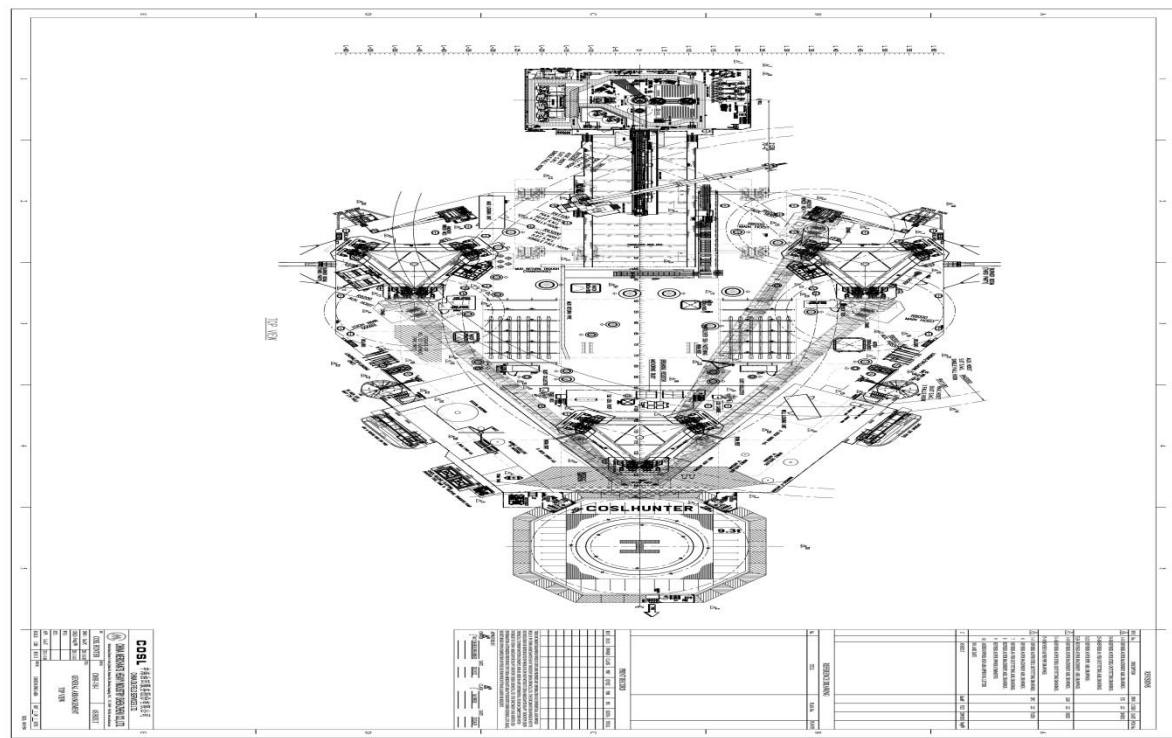
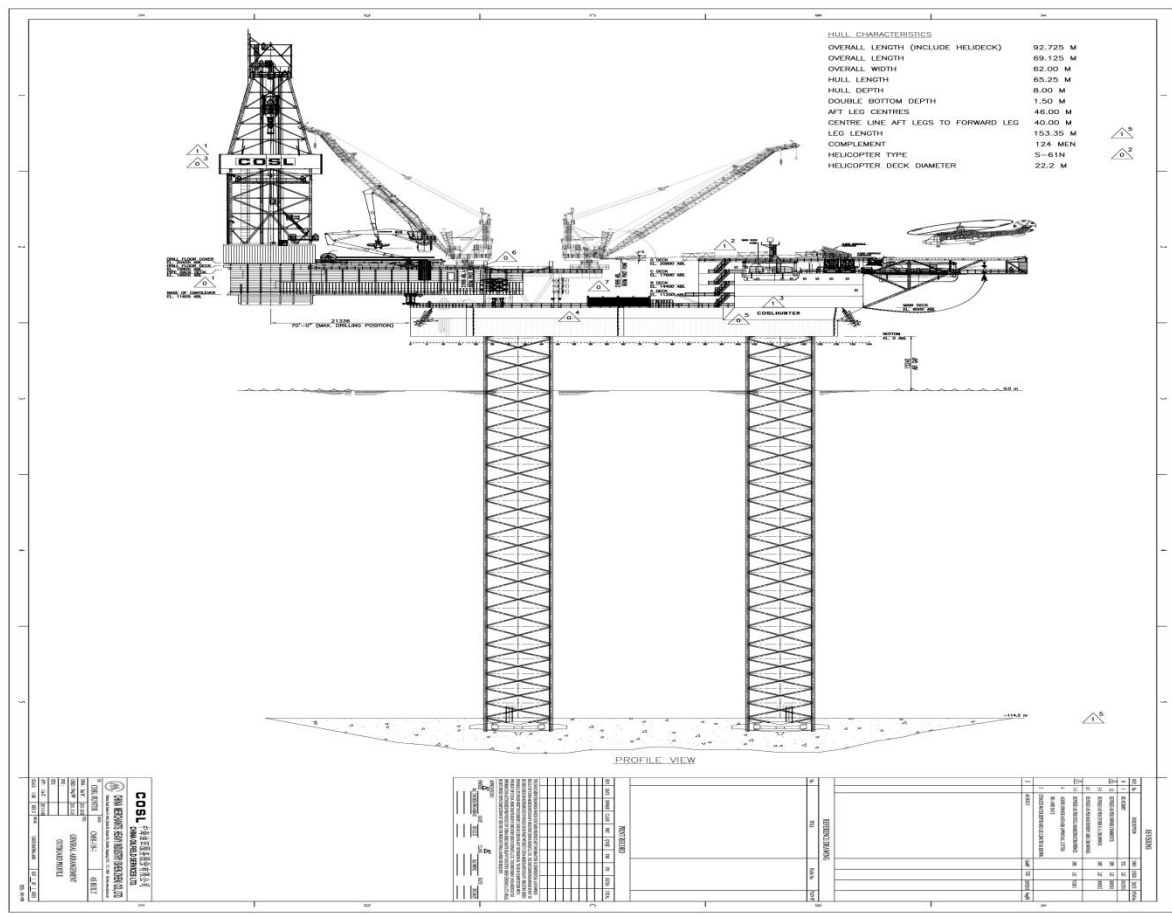
**OTHER FEATURES**

Helideck	Sikorsky S61 N , 20485 lbs
Tension System	PH/Hinged Push-Up Ring On Conductor, 225st, 4 * stroke 13.78"

These specifications are intended for general reference purposes only. All equipment shall be operated and maintained at all times, in compliance with COSL DRILLING standard operating manuals,policies and procedures, and within its stated operational limits or continuous rated capacity, in order to assure maximum operational efficiency.



## COSL HUNTER



These specifications are intended for general reference purposes only. All equipment shall be operated and maintained at all times, in compliance with COSL DRILLING standard operating manuals, policies and procedures, and within its stated operational limits or continuous rated capacity, in order to assure maximum operational efficiency.