

COSL POWER



For the additional information please contact:

MarketingDepartmentOf **COSL Drilling**

Telephone: +86 -10 -8452 2511

Email: sh_cosldrillingmarket@cosl.com.cn

Website: www.cosl.com.cn

Office address:

No.201,Haiyou Street, Yanjiao Developing Zone,

Sanhe City, Hebei Province (Post Code: 065201)



General Description

Design/Generation	Baker Marine Pacific Class 375
Constructing Shipyard	PPL SHIPYARD PTE LTD, Singapore
Deliver Year/Upgrades	2006
Classification	ABS
Flag	Singapore
Overall Dimensions	236.560ft L × 224.409ft W × 26.24ft D
Legs	3 x 154.349m(506.393ft); Triangular cross section leg structure
Usable leg below hull	132.550m(435ft)
Spudcan diameter	16.9m (55.446ft)
Draft at loadline	5.944m(19.5ft)
Displacement	19945.035t(43978.802kips)
Drilling Variable Load	3401t(7,500 kips)
Cantilever Envelope	21.34m(70ft)* ± 4.5m(15ft)
Operating Water Depth	114.3m(375ft)
Max. Rating Drilling Depth	9144m(30,000ft)
Accommodation	120 beds

Drilling Equipment

Derrick	National Oilwell Varco / Bolted H-Beam
Simultaneous setback-hookload capacity	2400 kips
Drawworks	National Oilwell Varco / D3000UE AC
Top Drive	National Oilwell Varco / HPS-750-E-AC-SG working pressure :7,500psi, Rated capacity :750st
Rotary Table	National Oilwell Varco / D-495 with Adapter Bushing for 37-1/2" Master Bushing
Pipe Handling	National Oilwell Varco / X-Y HydraRacker/ Racking Gripper Head:3% to 9% / 22,000lb/ Pick-up Elevator,2 7/8 to 13 5/8
Mud Pumps	3*NOV*14-P-220, 2,200hp/ea, 7,500psi
Solid Control	5* Derrick / DP626
Gumbo	National Oilwell Varco / GM250-VS-PPL
Drilling Manifold	Rated for 7,500 Psi

Power Plant

Main Power	5* Caterpillar 3516B HD diesel engines rated at 2,150hp, 1,200 rpm
Emergency Power	1 X Caterpillar 3508 DITA/ 1298hp, 1,800 rpm

STORAGE CAPACITIES

Fuel Oil	3,900bbls
Liquid Mud	4,150bbls
Brine	1,284bbls
Base Oil	1,274bbls
Drill water	4,850bbls
Potable Water	3,600bbls
Bentonite/barite	5,827ft3
Cement	5,827ft3
Sack Storage	5,000(@50lb ea) sacks

BOP Equipment

Diverter	Vetco Gray / KFDJ-500 Big bore / 500psi
BOP annular	Cameron / Wedge Cover Model, 13-5/8"*10,000 Psi,
BOP rams	2 X Cameron / U, 13-5/8"*10000Psi, Double Ram;
BOP handling	2 X Ingersoll RandBHS200M/E11001 / Pneumatic Chain Hoists with pendant controls , safe working load at 100MT each; Vertical travel length 30' (9.1M)

Cranes

Portforward	1 * API 2C and ABS/Baker Marine Kingpost
Stbd	Crane/BMC2250 55.1 st / 25 ft /15.0 st / 127.5 ft 1 * API 2C and ABS/Baker Marine Kingpost Crane/BMC1600 45.0 st / 25 ft/9.5 st / 106.5 ft
Port aft	1 * API 2C and ABS/Baker Marine Kingpost Crane /BMC 900E/ 25.0 st / 20 ft /7.5 st / 102.6 ft
Knuckle-Boom	1 * API 2C and ABS /National Oilwell Varco / Knuckle boom pipehandling crane with gripper yoke for 3½" to 20" tubulars

Mooring Equipment

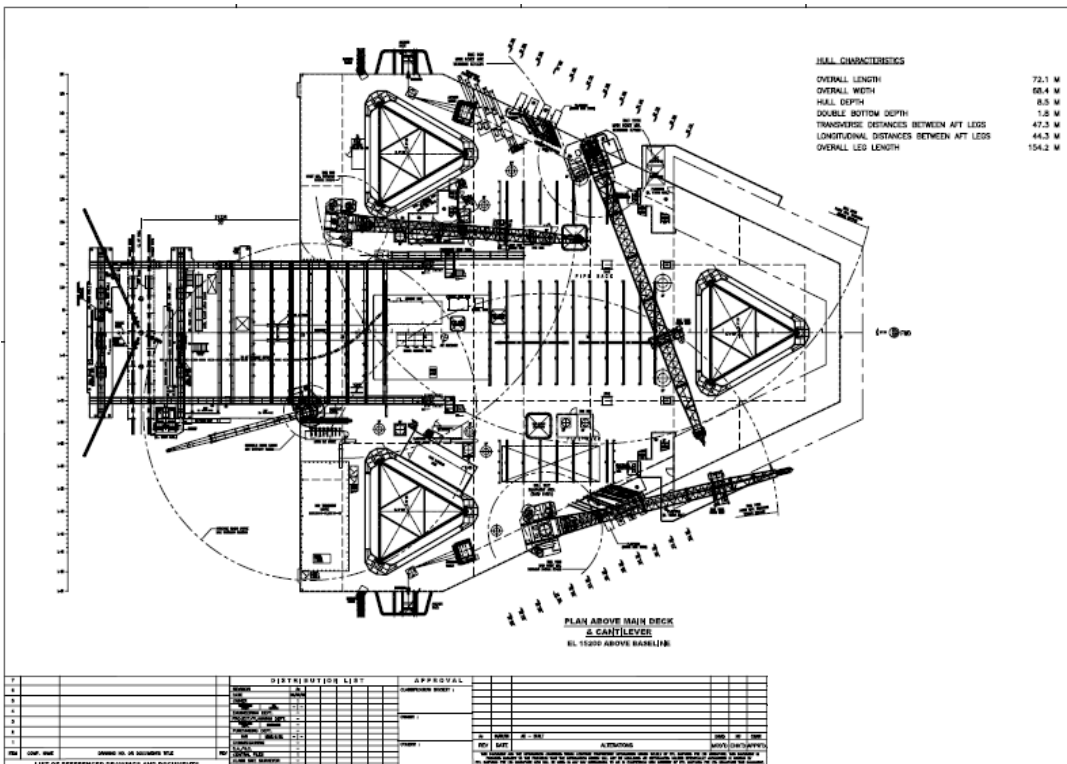
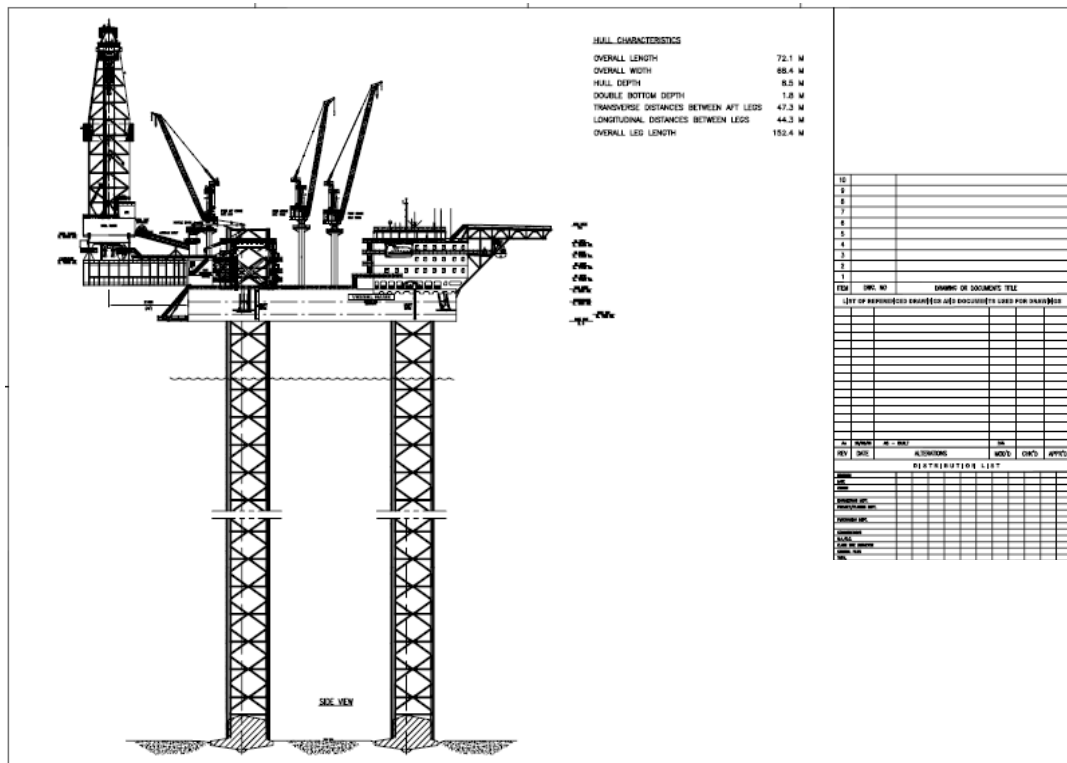
Mooring	4*Baker Marine single drum /26KW/Dual Speed, electric, 31.75 tons stall pull, 63.5tons holding.
Winches	
Anchor Lines	4* RRL galvanized/ 1 ½in/ 3,000ft
Anchors	4* Flipper Delta ,6t

OTHER FEATURES

Helideck	Rated for SikorskyS61N helicopter
Tension System	National Oilwell Varco / Hinged Push-up Ring on Conductor Platform, with 4 Hydraulicand 4 Centralizers / 250ST

These specifications are intended for general reference purposes only. All equipment shall be operated and maintained at all times, in compliance with COSL DRILLING standard operating manuals,policies and procedures, and within its stated operational limits or continuous rated capacity, in order to assure maximum operational efficiency.

COSL POWER



These specifications are intended for general reference purposes only. All equipment shall be operated and maintained at all times, in compliance with COSL DRILLING standard operating manuals, policies and procedures, and within its stated operational limits or continuous rated capacity, in order to assure maximum operational efficiency.