

HAI YANG SHI YOU 944



For the additional information please contact:

Marketing Department of **COSL Drilling**

Telephone: +86 -10 -8452 2511

Email: sh_cosldrillingmarket@cosl.com.cn

Website: www.cosl.com.cn

Office address:

No.201, Haiyou Street, Yanjiao Developing Zone,
Sanhe City, Hebei Province (Post Code: 065201)



General Description

Design/GenerationGusto MSC CJ50-X120-F
Constructing ShipyardChina Merchants Heavy Industry(Jiangsu) Co.,Ltd.
Deliver Year/Upgrades2016
ClassificationABS&CCS
FlagChina
Overall Dimensions321.5ft L*224.8ft W x 31.2ft D
Legs3 x 541.77ft; Triangular
Usable leg below hull463.0ft
Spudcan diameter73.2ft
Draft at load line22.9ft
Displacement55,890.6kips
Variable Load16,936 kips
Cantilever Envelope10ft-80ft*port23.8ft-stbd26.2ft
Operating Water Depth400ft
Max. Rating Drilling Depth30,000ft
Accommodation150 beds

Drilling Equipment

Derrick	National Oilwell Varco / Bolted H-beamD-170x40x40x18x1500
Hookload Capacity	750st
Drawworks	National Oilwell Varco / SSGD-750-4600-57-82-10,5
Top Drive	National Oilwell Varco / TDS-8SA, 1,150hp, 7,500psi
Rotary Table	National Oilwell Varco / VBJ RST 49-1/2" with Adapter Bushing for 37-1/2" Master Bushing
Tubular Handling	National Oilwell Varco / Hydro Racker HR X-Y vertical column racker L4606-D1197-G0001 2-7/8 to 9 1/2 / 22,040lb 3 1/2"-9 3/4"
Mud Pumps	3*NOV* 14-P-220, 2,200hp/ea, 7,500psi
Solid Control	5* DERRICK / Hyperpool HYPERPOOL 4-PANEL 1000 x 5 gpm with PMD API 80 Screens
Drilling Manifold	Rated for 15,000 Psi

Power Plant

Main Power	5*Caterpillar 3516CHD diesel engines rated at 1,603kw, 1,200 rpm
Emergency Power	1 X Caterpillar /C32 diesel engine rated 994kw, 1,800 rpm driving an Leory Somer generator

STORAGE CAPACITIES

Fuel Oil4,717bbbls
Liquid Mud5195bbbls
Brine1,811bbbls
Base Oil1,924bbbls
Drill water19,264bbbls
Potable Water2,717bbbls
Bentonite/barite8,825ft3
Cement8,825ft3
Sack Storage5,000 sacks

BOP Equipment

Diverter	Dril-Quip / 500psi
BOP annular	CAMERON /DL, 18-3/4"*10,000 Psi,
BOP rams	2* CAMERON / hydraulic, 18-3/4"*15k Psi, Double Ram;
BOP handling	2*Ingersoll Rand / Pneumatic Chain Hoists , safe working load at 100MT each; Vertical travel length 40ft

Cranes

Port&Stbd	2* Seatrax S7226/ 52t-29.5FT/11T-141FT
Fwrd	1 * Seatrax S7226/ 52t-29.5FT/11T-141FT
Knuckle-Boom	1* NOV/12T@15 - 49 ft/ 5.5 t @ 25 - 82 ft

Mooring Equipment

Mooring Winches	4* PH single drum two speed ,electric, 40 T rated pull capacity.
Anchor Lines	4* G.S.W.R 6 X 36 + IWRC,1000m
Anchors	4* JASON OFFSHORE/HHP DELTA ANCHOR,4.5t

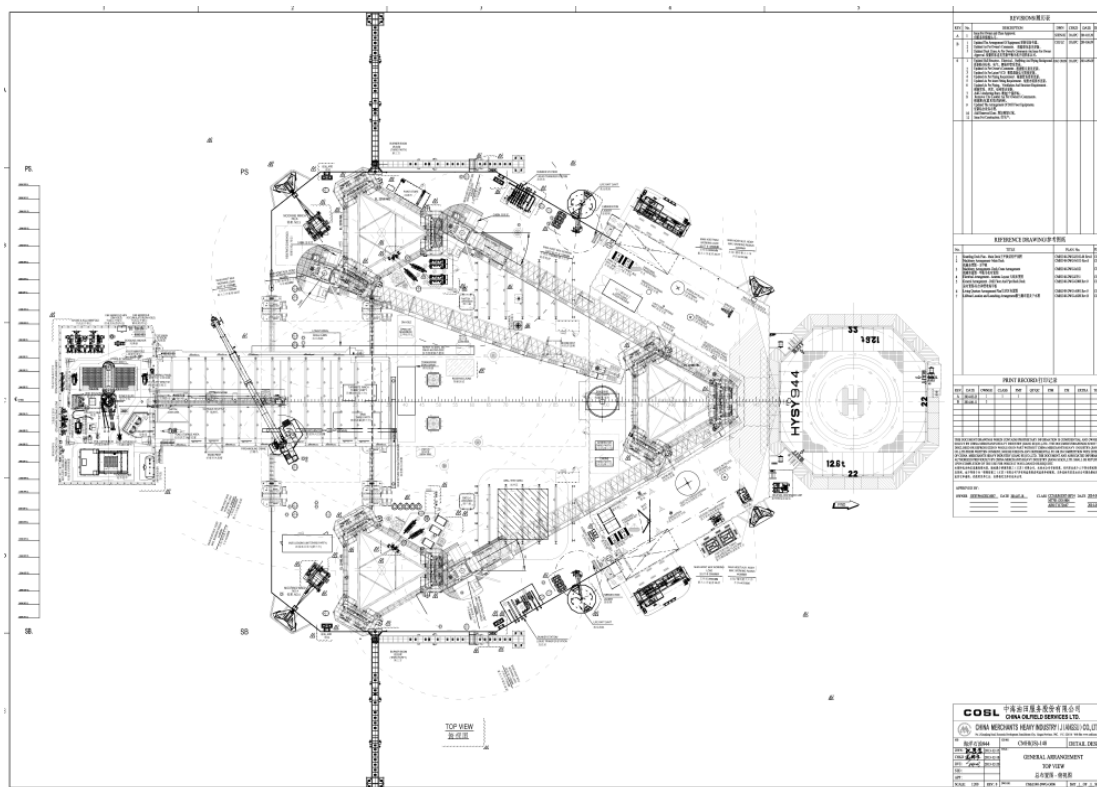
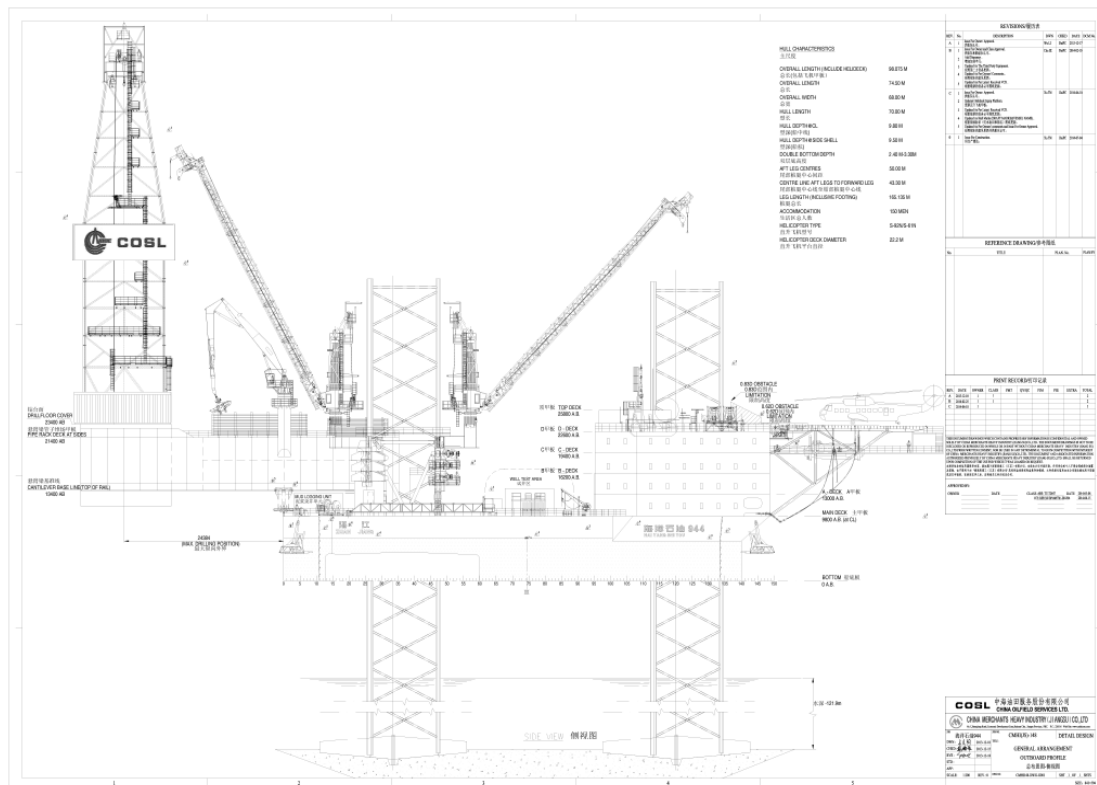
OTHER FEATURES

Helideck	Rated for Sikorsky 92&S61N helicopter
Tension System	PH / Hydraulic/4 lift points/ 230ST

These specifications are intended for general reference purposes only. All equipment shall be operated and maintained at all times, in compliance with COSL DRILLING standard operating manuals,policies and procedures, and within its stated operational limits or continuous rated capacity, in order to assure maximum operational efficiency.

These specifications are intended for general reference purposes only. All equipment shall be operated and maintained at all times, in compliance with COSL DRILLING standard operating manuals, policies and procedures, and within its stated operational limits or continuous rated capacity, in order to assure maximum operational efficiency.

HAI YANG SHI YOU 944 (HYSY 944)



These specifications are intended for general reference purposes only. All equipment shall be operated and maintained at all times, in compliance with COSL DRILLING standard operating manuals, policies and procedures, and within its stated operational limits or continuous rated capacity, in order to assure maximum operational efficiency.