

SS AMAZONIA



For the additional information please contact:

MarketingDepartmentof **COSL Drilling**

Telephone: +86 -10 -8452 2511

Email: sh_cosldrillingmarket@cosl.com.cn

Website: www.cosl.com.cn

Office address:

No.201,Haiyou Street, Yanjiao Developing Zone,
Sanhe City, Hebei Province (Post Code: 065201)



General Description

Design/Generation	Friede&Goldman.Ltd.Millennium AS.
Constructing Shipyard	Yantai Raffles, China
Year of Construction	2011
Classification	BV
Flag	Marshall Islands
Overall Dimensions	105 L*73.1m W
Main deck elevation above baseline	33.84m
Associated air gap	(drilling) 9.17m
Draft at load line (deepest)	16.75m
Displacement at load line	36415mt
Drilling draft/related displacement	16.75m/36415mt
Max. Substructure/Rotary Load	907mt/NA
Setback capacity	680.3mt
Fuel consumption (drilling)	approx.25mt /day
Operating Water Depth	500m(min)/2400m(max designed)
Max. Rating Drilling Depth	7000m
Accommodation	148

Drilling Equipment

Derrick	Loadmaster Conventional/Model: D200046X40X18X18X190CD
Hookload Capacity	2.000.000 Lbs.
Drawworks	LDW2000K-101
Top Drive	DDTD-1000 Rated capacity : 1000mt Working Pressure :7500 psi
Rotary Table	LTI-CAMERON L605 / Maximum opening : 60-1/2" Rated capacity:1250mt
Drilling String	Control Flow/ CBC, 800psi,3000psi,25ft/static load
Motion	2000kips
Compensator	Max. compensating load capacity: 363mt Compensating stroke: 25ft
Mud Pumps	3*W2215Cameron; 1* WH2214Cameron Maximum working pressure : 7500 psi
Solid Control	4*MISWACO; 1*DERRICK
Standpipe manifold	System working pressure : 7500psi
Choke manifold	Rated for 15,000 Psi

Power Plant

Main Power	7* CATERPILLAR 3616/5060KW/ 900 rpm
Emergency Power	1* CATERPILLAR 3512B/1125KW/ 1800 rpm

STORAGE CAPACITIES

Fuel Oil	2925 m3
Mud Active Processing Tanks	842 m3
Brine	318 m3
Base Oil	0 m3
Drill water	2495 m3
Potable Water	440 m3
Bentonite/barite	210 m3
Cement	125 m3
Sack Storage	5000 sacks

BOP Equipment

Diverter	GE KFDS-500,60.5 Rotary Table,2000KIP Handoff /500psi
BOP annular (LMRP)	Cameron DL /18 3/4" / Working pressure : 10,000 psi
BOP rams	Cameron TL /18-3/4"*15k Psi, 5 *Ram;
Riser tensioner	10*Control Flow/250 KIPS Wireline Riser Tensioner Capacity each tensioner :250kips Maximum stroke :3810mm
Moon pool	26.2m x 6.9m

Cranes

Aft and Stbd sport	2* Approved by BV/TSC PATRIOT Series 198 Model 200/ Load/radius/speed (minimum radius) :50 mt/137.79486ft/0.9842519686sec 1*Approved by BV/ TSC PATRIOT Series 240 Model 200/ Load/radius/speed (maximum radius) :60mt/145.012686ft /2.416885389sec
BOP handling system	Friede & Goldman / BOP CRANE-2*135 mt , Rated capacity:300mt Rated capacity:270mt/BOP Trolley 400mt

Mooring Equipment

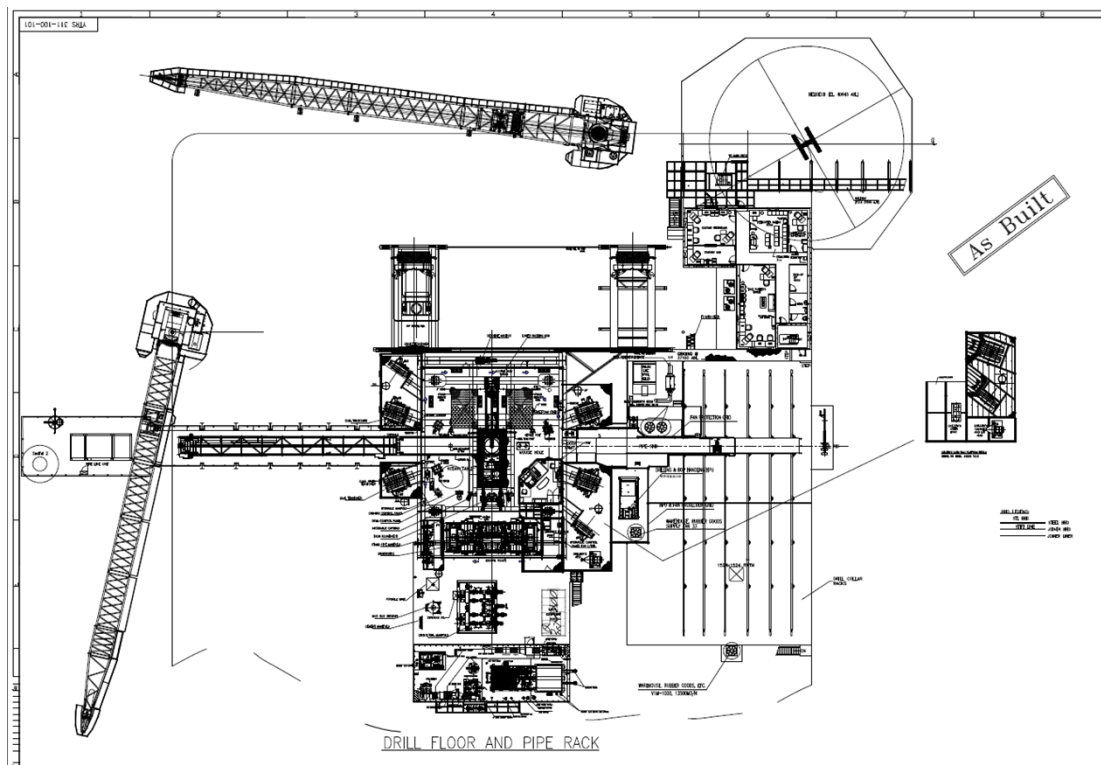
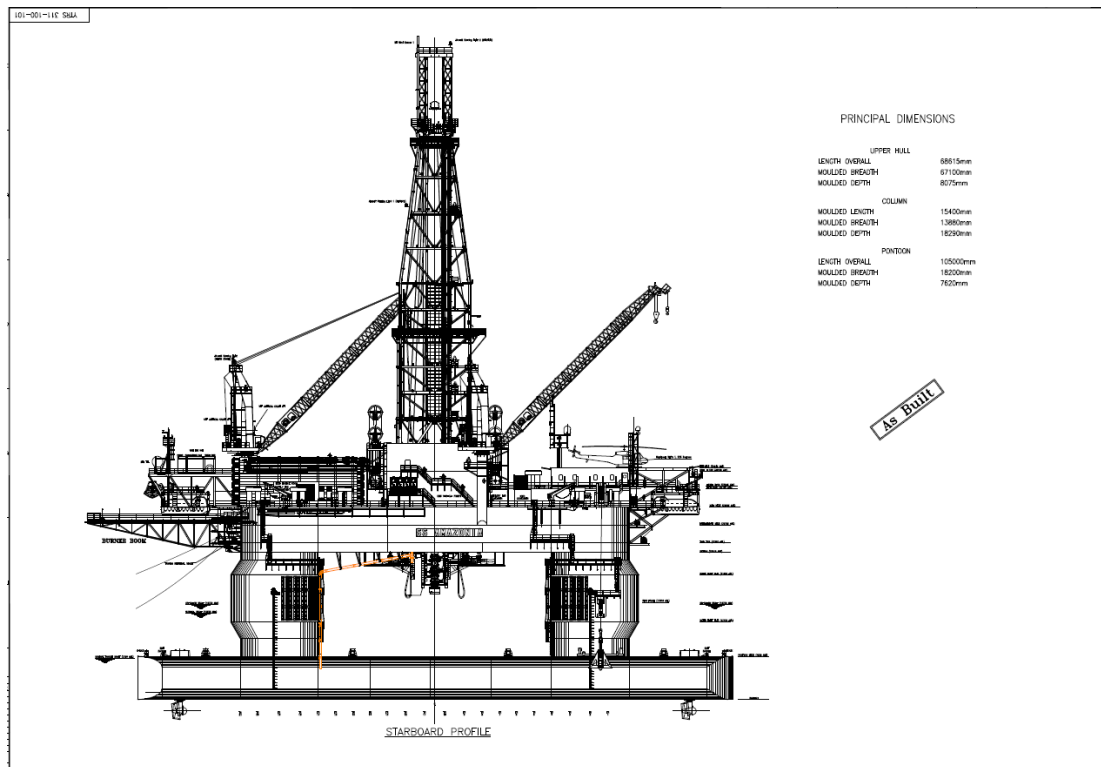
Mooring	2* A Rim Machinery & Engeneering CO./
Winches	ARM3-110/Total HP per winch :147.5hp Rated pull : 165mt
Anchor Lines	ARM3-110 / Right Hand ore lay – Galvanized Useful length (nominal) :450m
Thrusters	8* Azimuthing/ Wartsila FS1510-350 NU/ Total KW per thruster : 2425
Dynamic Positioning	Kongsberg K-Pos DP-32 + cJoy / DPS 132 DGPS + DPS 200 DGPS/ VERIPOS DGPS Satellite/HiPAP 350

OTHER FEATURES

Helideck	Sikorsky S61N & S-92
Station Keeping	DP2, Thrusters (8) x 2,425kw, 360° Azimuthing Fixed Pitch, Variable Speed

These specifications are intended for general reference purposes only. All equipment shall be operated and maintained at all times, in compliance with COSL DRILLING standard operating manuals,policies and procedures, and within its stated operational limits or continuous rated capacity, in order to assure maximum operational efficiency.

SS AMAZONIA



These specifications are intended for general reference purposes only. All equipment shall be operated and maintained at all times, in compliance with COSL DRILLING standard operating manuals, policies and procedures, and within its stated operational limits or continuous rated capacity, in order to assure maximum operational efficiency.