

## HAI YANG SHI YOU 982



For the additional information please contact:

MarketingDepartmentOf COSL Drilling

Telephone: +86 -10 -8452 2511

Email: sh\_cosl\_drillingmarket@cosl.com.cn

Website: www.cosl.com.cn

Office address:

No.201,Haiyou Street, Yanjiao Developing Zone,  
Sanhe City, Hebei Province (Post Code: 065201)

## General Description

Design/Generation .....	AGILITY GROUP - A5000
Constructing Shipyard .....	Dalian DSIC, China
Year of Construction .....	2018
Classification .....	DNV&CCS
Flag .....	China
Overall Dimensions .....	104.5m L*70.5m W
Main deck elevation above baseline .....	37.55m
Associated air gap .....	12.05m
Draft at load line (deepest) .....	17.5m
Displacement at load line.....	40849mt
Drilling draft/related displacement .....	17.5m/40849mt
Max. Substructure/Rotary Load .....	907mt/680mt
Setback capacity.....	500mt
Fuel consumption (drilling).....	approx.28mt /day
Operating Water Depth .....	60m(min)/1800m(max designed)
Max. Rating Drilling Depth .....	9144m
Accommodation .....	180

## Drilling Equipment

Derrick	NOV SDBN 750-40x40 x 170' - Vdoor 66ft
Hookload Capacity	680mt
Drawworks	NOV/AHD-750-5750-73-5-82-10.5
Top Drive	NOV/TDS 8SA Rated capacity : 680mt/ working pressure :7500 psi
Rotary Table	NOV/RST 605 60-1/2" Rated capacity:907mt
Active Heave	Integrated in theAHD-750-5750 Drawworks
Compensator	Max. compensating load capacity: 680mt Compensating stroke: Depend on the length of drilling line
Mud Pumps	3*NOV* 14-P-220+1*BOMCO* F-800 Maximum working pressure : 517bar
Solid Control	4*NOV Brandt VSM MS+1*NOV Brandt VSM300
Standpipe manifold	System working pressure : 7500psi
Choke manifold	Rated for 15,000 Psi

## Power Plant

Main Power	6* Wartsila/12V32 /6600KW/ 720 rpm
Emergency Power	No separate unit. All six main generators are classified as emergency generators.

## STORAGE CAPACITIES

Fuel Oil.....	2527 m3
Mud Active Processing Tanks .....	670.9 m3
Brine .....	1139 m3
Base Oil.....	1139 m3
Drill water.....	1216 m3
Potable Water.....	1131 m3
Bentonite/barite.....	357 m3
Cement .....	357m3
Sack Storage.....	6000 sacks

## BOP Equipment

Diverter	NOV/21-500-60-EXT / 500psi
BOP annular	2*NOV/Wedge Cover "Standard" /18 ¾"/ Working pressure : (LMRP) 10,000 psi
BOP rams	National Oilwell Varco /18-3/4"*15k Psi, 5 *Ram;
Riser	8*NOV/200 KIPS Dual Riser Tensioner
tensioner	Capacity each tensioner :200kips Maximum stroke :3810mm
Moon pool	25.9m x 8.9m x9.9m

## Cranes

Port & Stbd	2* DNV/CCS class notation CRANE,API 2C 7th Edition, EN /Liebherr/ BOS 4200-80 Litronic/Load/radius/speed (minimum radius) :80 mt/ 9.8m/0.2m/s;
Aft	Approved by DNV/CCS / NOV/ PC2401K; Load/radius: Pipe handling 20": 3.5 mt /26.6m Pipe handling 30": 7mt /26.6m Riser handling: 15mt/17.7m
BOP handling	NOV/2x100T/Rated capacity: 2 x 100 mt
system	NOV/BOP-E-400-8.9-9.25/SR/ Rated capacity: 400 mt

## Mooring Equipment

Mooring	4 *double * NOV-BLM/MW 350/Total HP per
Winches	winch :670kw/Rated pull : 390mt
Anchor Lines	8 installed/ DSR Wire Corp. /POWERFLEXG6XSESWS(47)+IWRC Useful length (nominal) :650m
Thrusters	6* Azimuthing/ Rolls Royce UUC405 FP - 4.5MW / Total KW per thruster : 4500kw
Dynamic	Kongsberg / DPM-22 / Full DP-3 and POSMOOR Mooring assist
Positioning	/ 3xHipap & 3xDGPS & 2x Tautwire

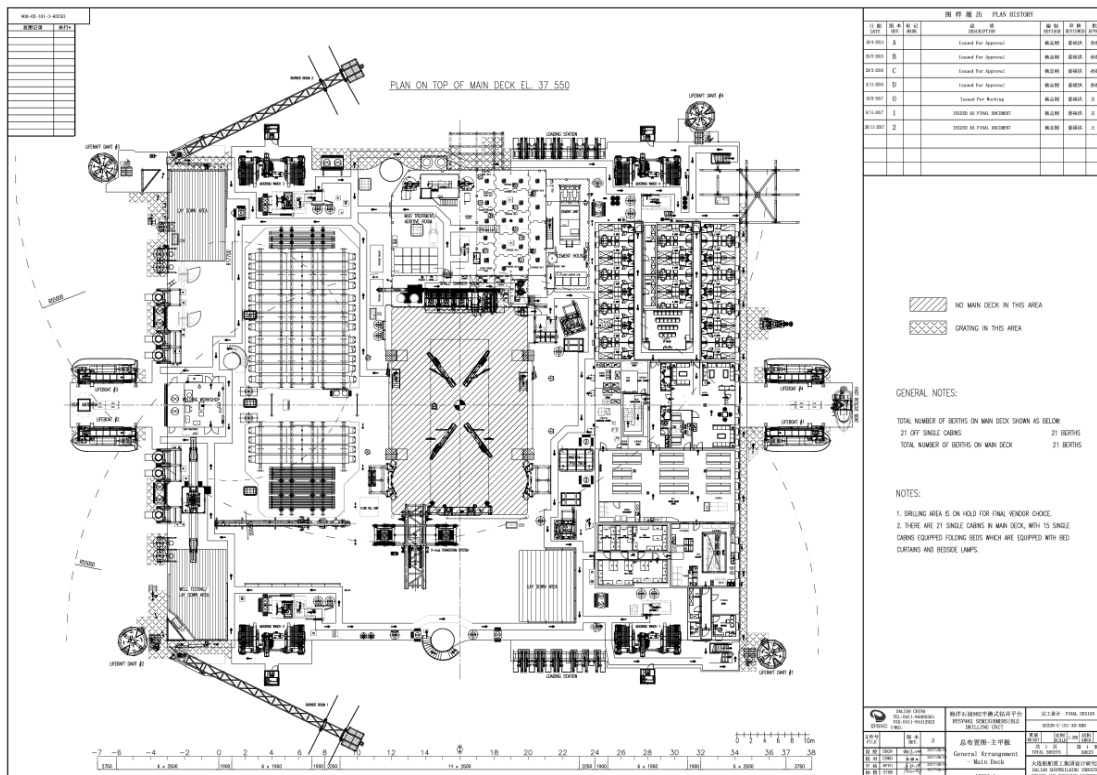
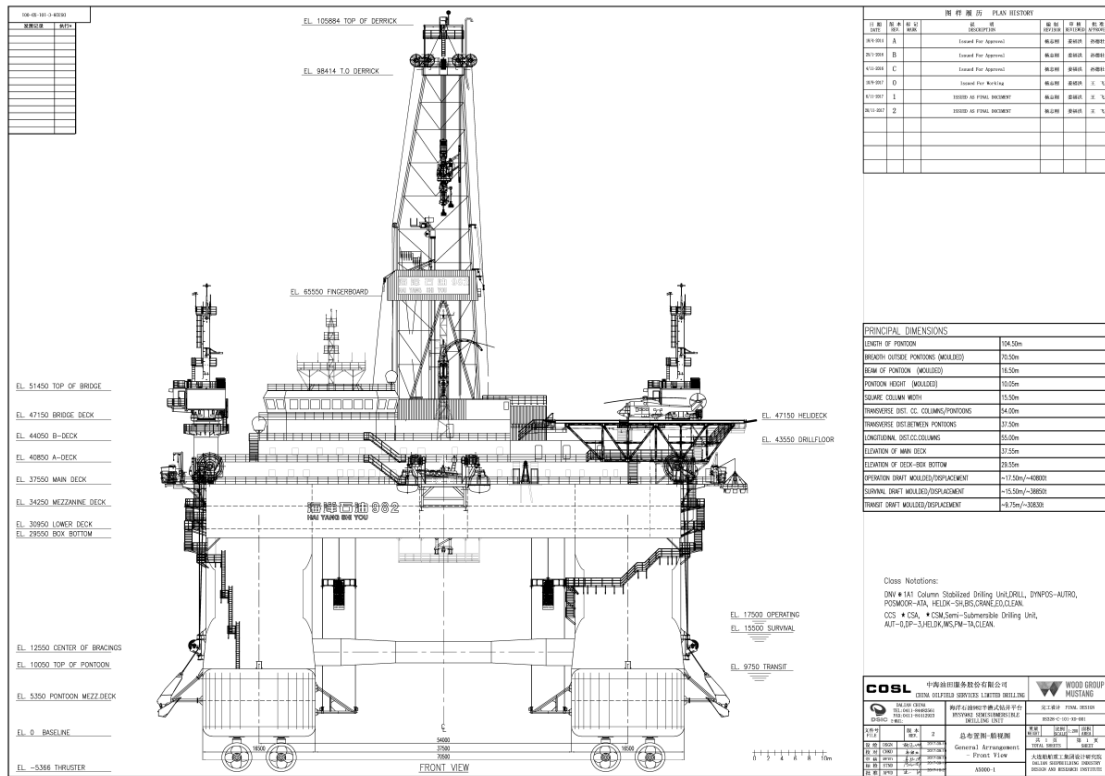
## OTHER FEATURES

Helideck	SIKORSKY S61N and S92
Station Keeping	DP3, POSMORATA

These specifications are intended for general reference purposes only. All equipment shall be operated and maintained at all times, in compliance with COSL DRILLING standard operating manuals,policies and procedures, and within its stated operational limits or continuous rated capacity, in order to assure maximum operational efficiency.

These specifications are intended for general reference purposes only. All equipment shall be operated and maintained at all times, in compliance with COSL DRILLING standard operating manuals, policies and procedures, and within its stated operational limits or continuous rated capacity, in order to assure maximum operational efficiency.

# HAI YANG SHI YOU 982 ( HYSY982 )



These specifications are intended for general reference purposes only. All equipment shall be operated and maintained at all times, in compliance with COSL DRILLING standard operating manuals,policies and procedures, and within its stated operational limits or continuous rated capacity, in order to assure maximum operational efficiency.